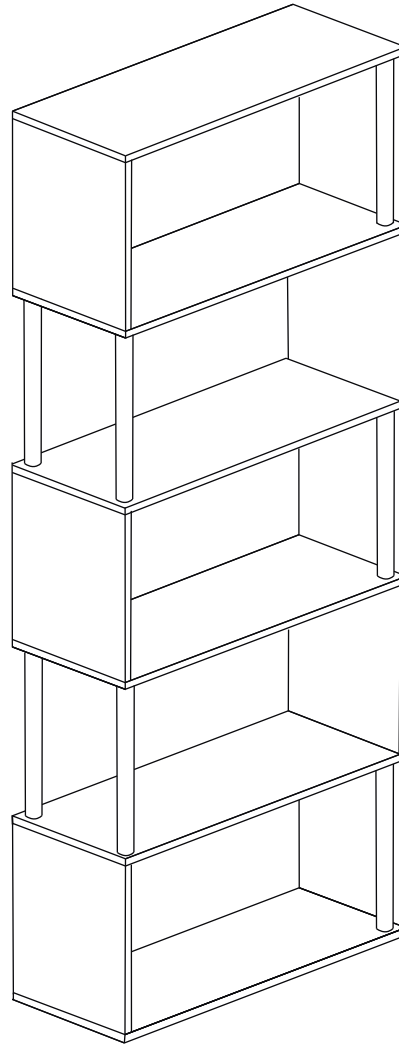
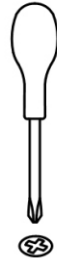
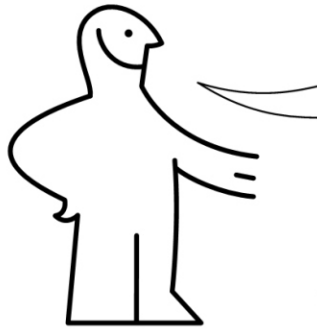


Assembly Instruction

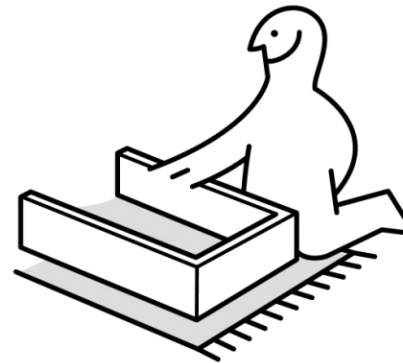
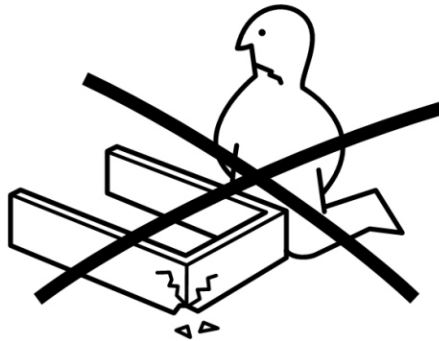
Loop Bookcase



Tools Required For Assembly



Assemble Item On A Clean Flat Surface



Please check you have all hardware before assembling.

If you are missing any hardware from the hardware list please email our customer service at

MAIL: customerservice@jasperj.co.nz

Please ensure you have the name of item, store purchase from, hardware part required and quantity.

Please retain your receipt for proof of purchase to validate warranty. Enjoy your new purchase.

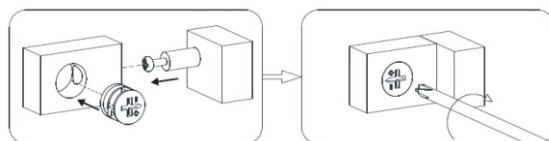
This exploded view diagram illustrates the assembly of a three-tier shelving unit. The components are labeled as follows:

- 1**: Main vertical side panels.
- 2**: Front vertical panels.
- 3**: Top horizontal shelf.
- 4**: Middle horizontal shelf.
- 5**: Bottom horizontal shelf.
- 6**: Reinforced bottom horizontal shelf.
- 7**: Vertical support posts.
- 8**: Small circular fasteners or spacers.
- 9**: Bottom horizontal shelf (labeled in the original image).

The diagram shows the relative positions and alignment of these parts for assembly. The shelves (3, 4, 5, 6, 9) are shown being inserted into the side panels (1) and front panels (2). The support posts (7) are shown being inserted into the shelves and side panels. The fasteners (8) are shown being used to secure the shelves and panels together.

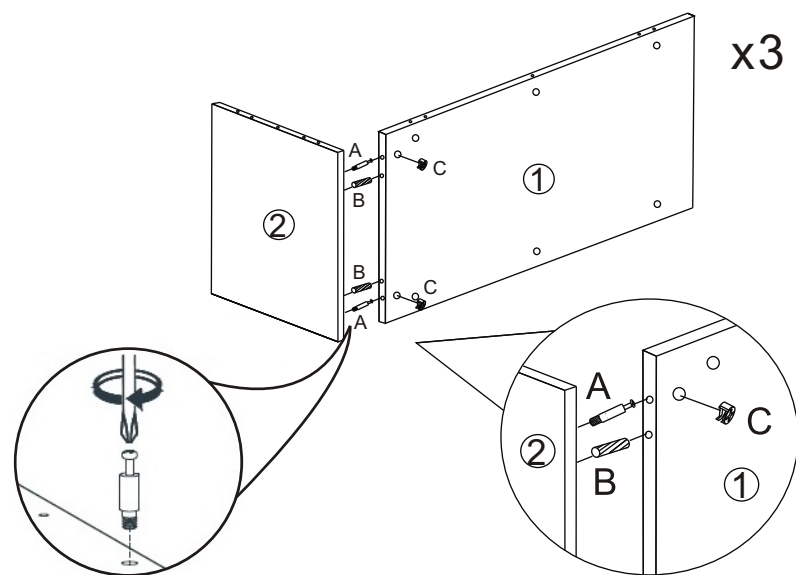
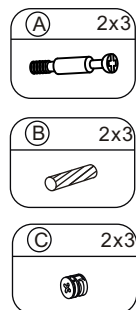
Technical drawings of 11 different fasteners, labeled A through K, with their respective quantities:

- A:** A screw with a cross-shaped head and a threaded shank. Quantity: x 24.
- B:** A cylindrical bolt with a threaded shank. Quantity: x 38.
- C:** A hexagonal nut with a cross-shaped hole in the center. Quantity: x 24.
- D:** A long, threaded bolt with a hexagonal head. Quantity: x 7.
- E:** A threaded bolt with a hexagonal head and a washer. Quantity: x 7.
- F:** A long, threaded bolt with a hexagonal head. Quantity: x 30.
- G:** A hexagonal nut with a cross-shaped hole in the center. Quantity: x 4.
- H:** A small, cylindrical bolt with a hexagonal head. Quantity: x 15.
- I:** A small, cylindrical bolt with a hexagonal head. Quantity: x 24.
- J:** A small, L-shaped bolt with a hexagonal head. Quantity: x 1.
- K:** A small, L-shaped bolt with a hexagonal head. Quantity: x 1.

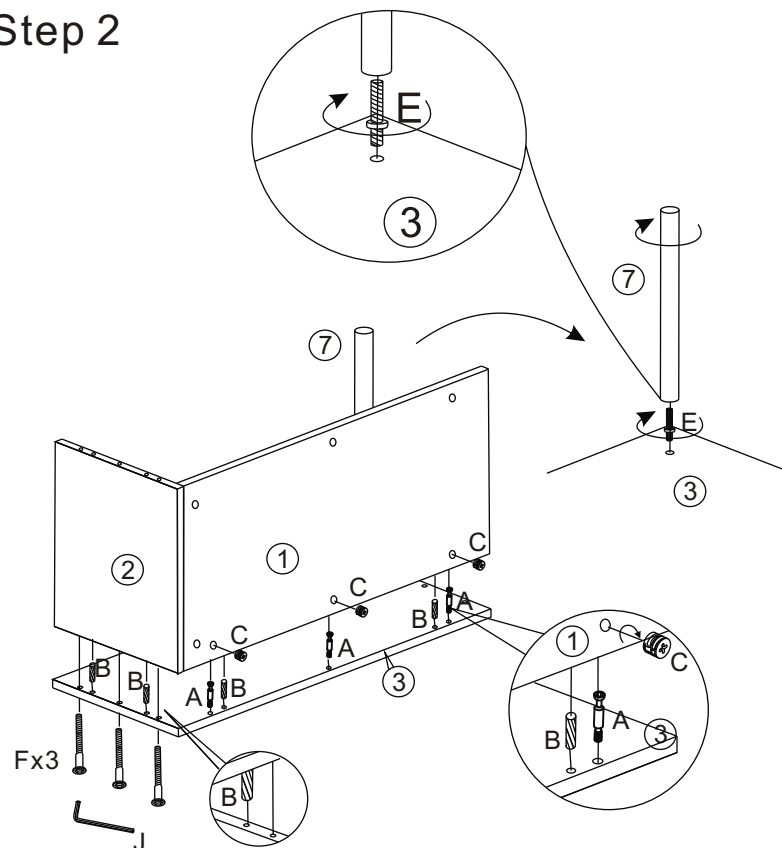
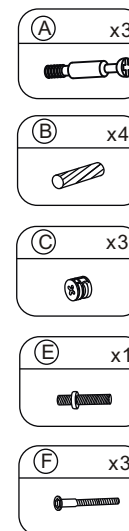


Please hand tighten this with screwdriver!

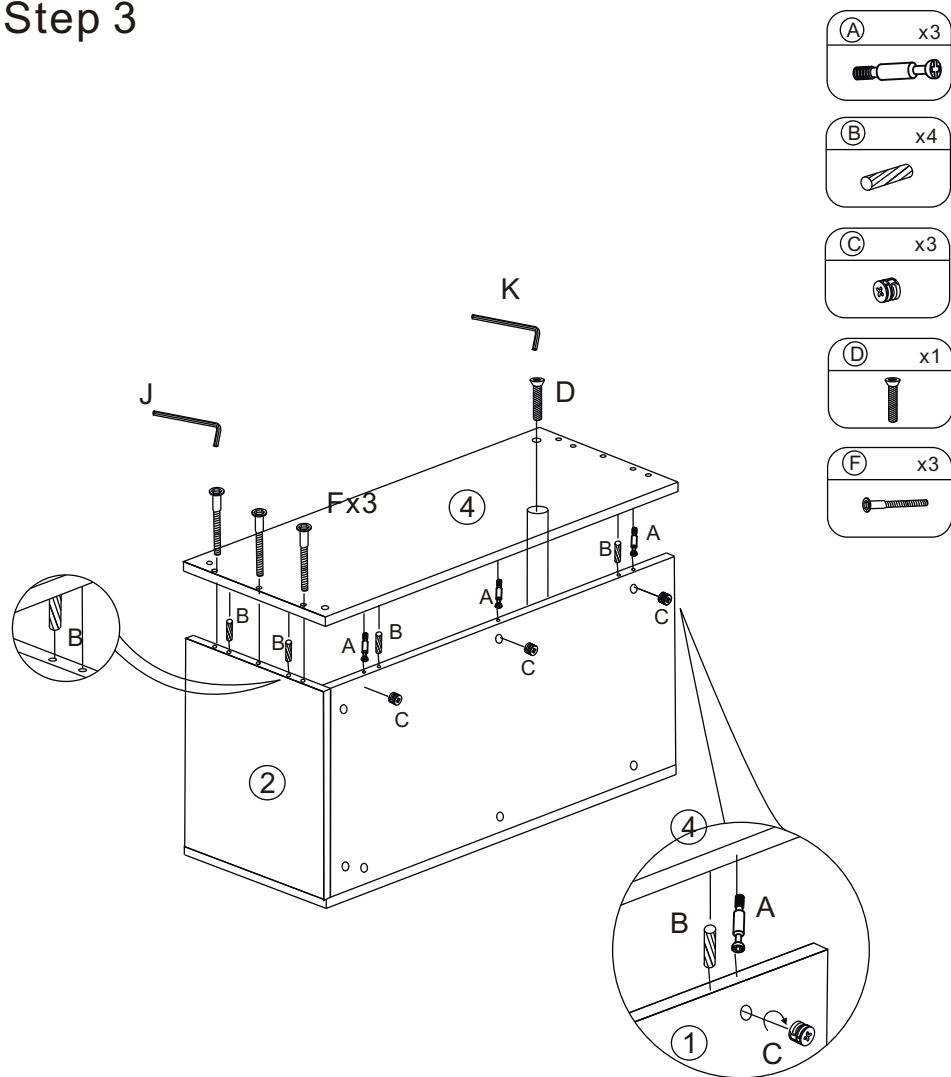
Step 1



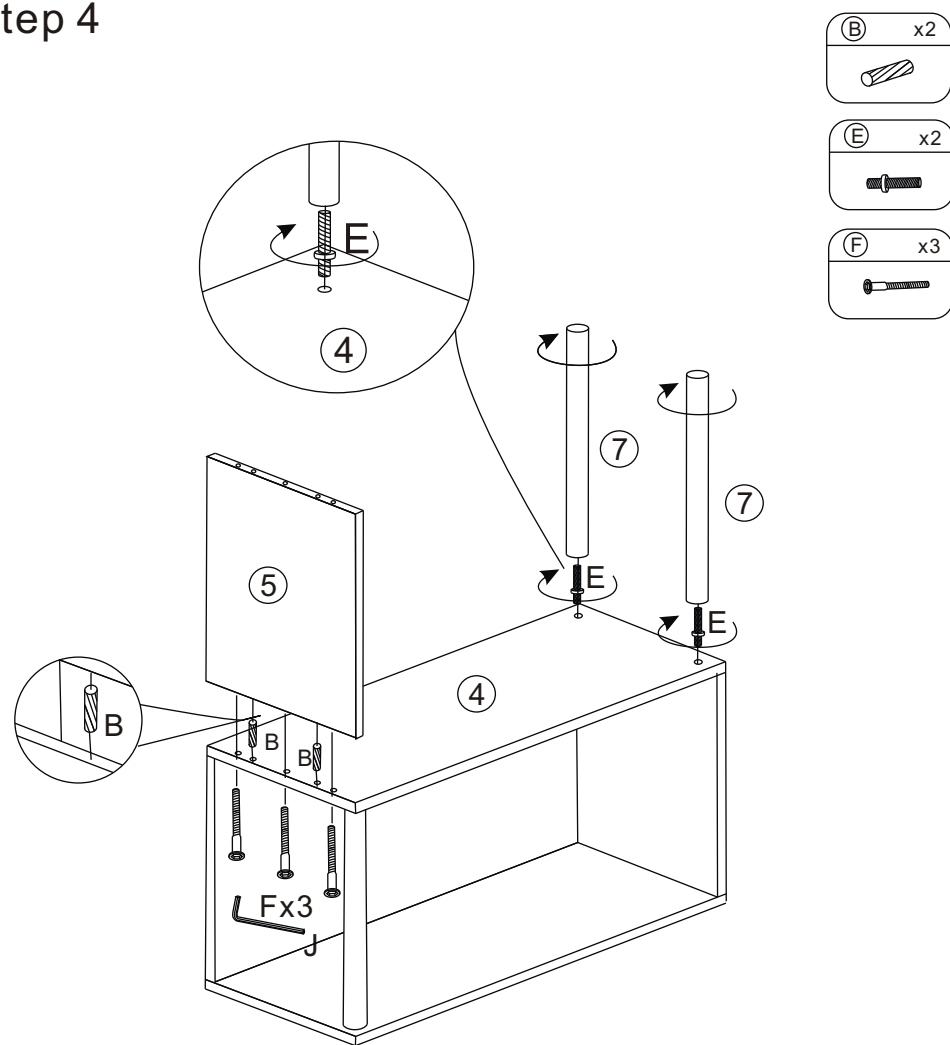
Step 2



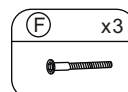
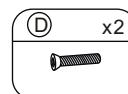
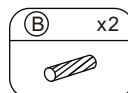
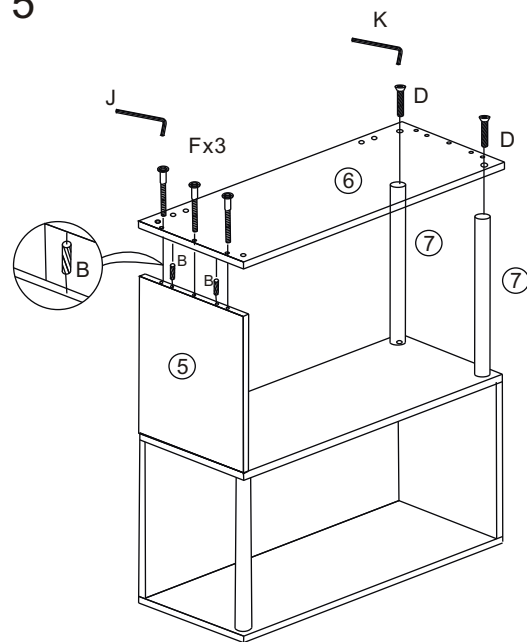
Step 3



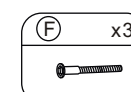
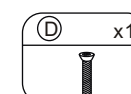
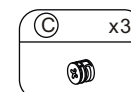
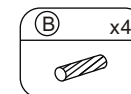
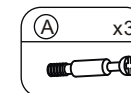
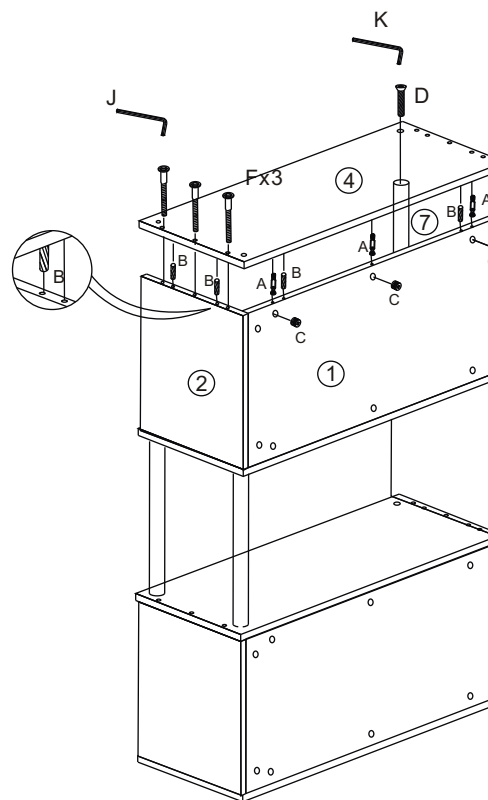
Step 4



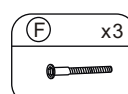
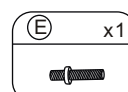
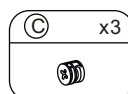
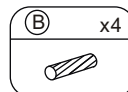
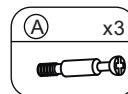
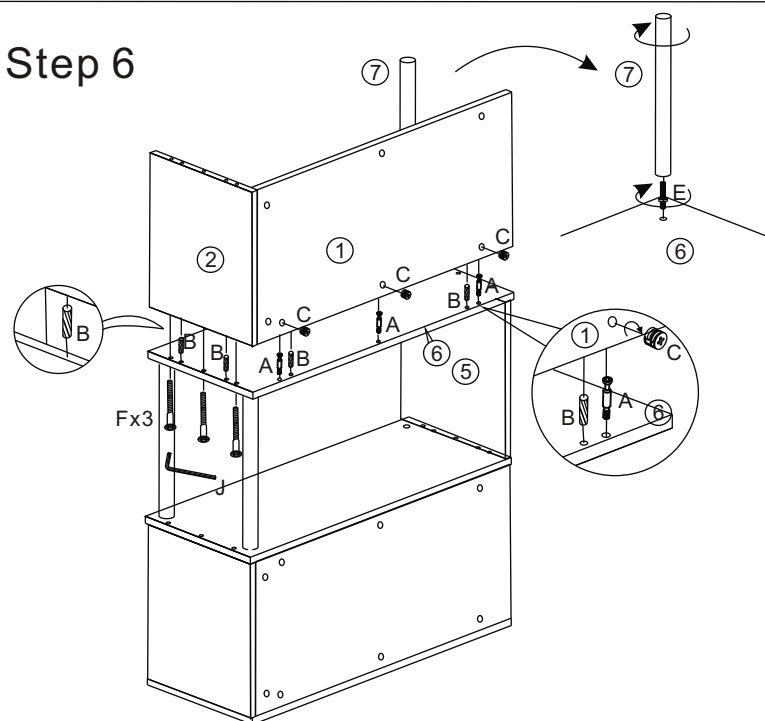
Step 5



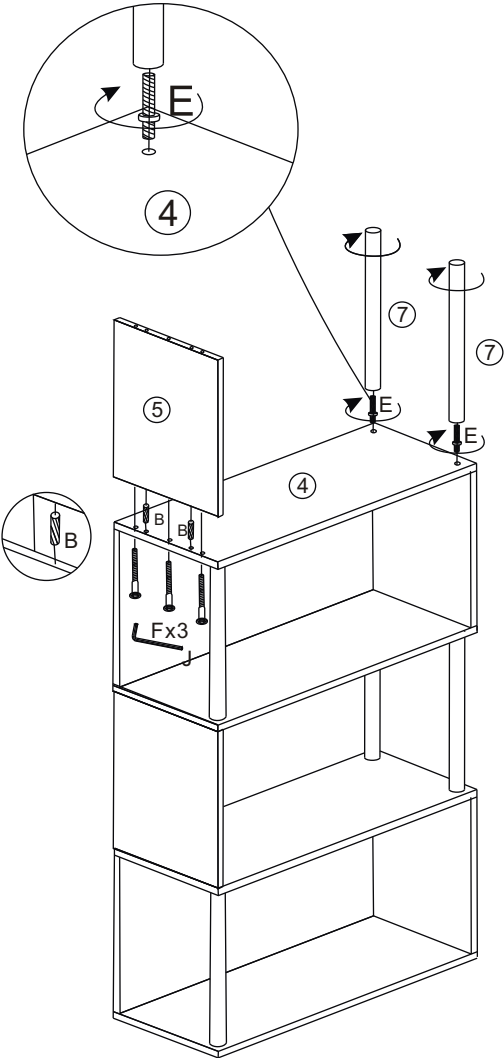
Step 7



Step 6

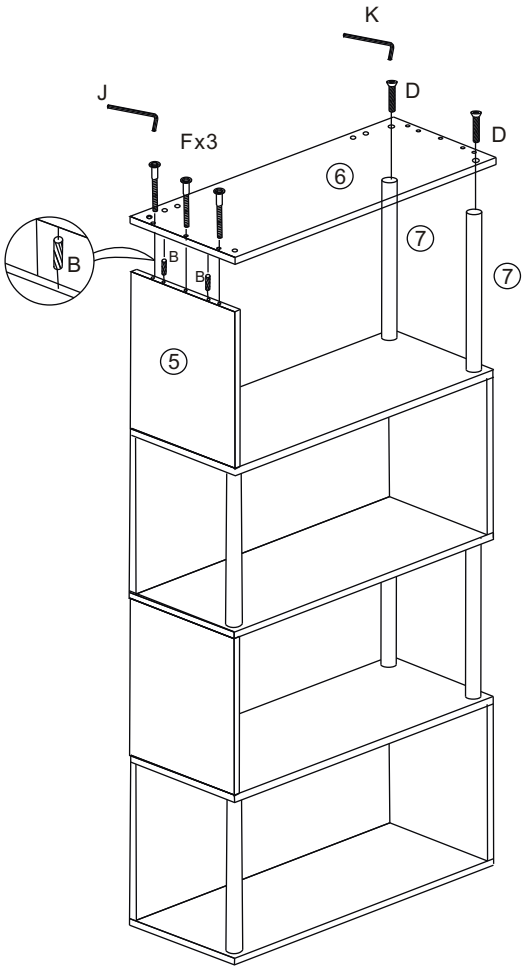


Step 8

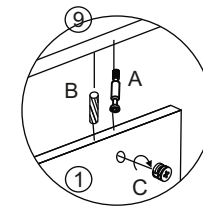


- (B) x2
- (E) x2
- (F) x3

Step 9



- (B) x2
- (D) x2
- (F) x3

[illegible]

Step 12

