

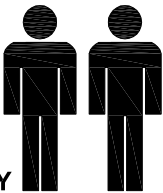
MODEL NAME:

WORKSPACE SOHO
L-DESK

2.0hr

APPROXIMATE ASSEMBLY TIME

2 PEOPLE FOR ASSEMBLY

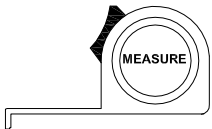
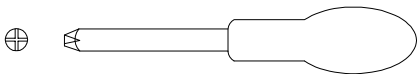


FLOOR AREA
2.0M X 2.0M



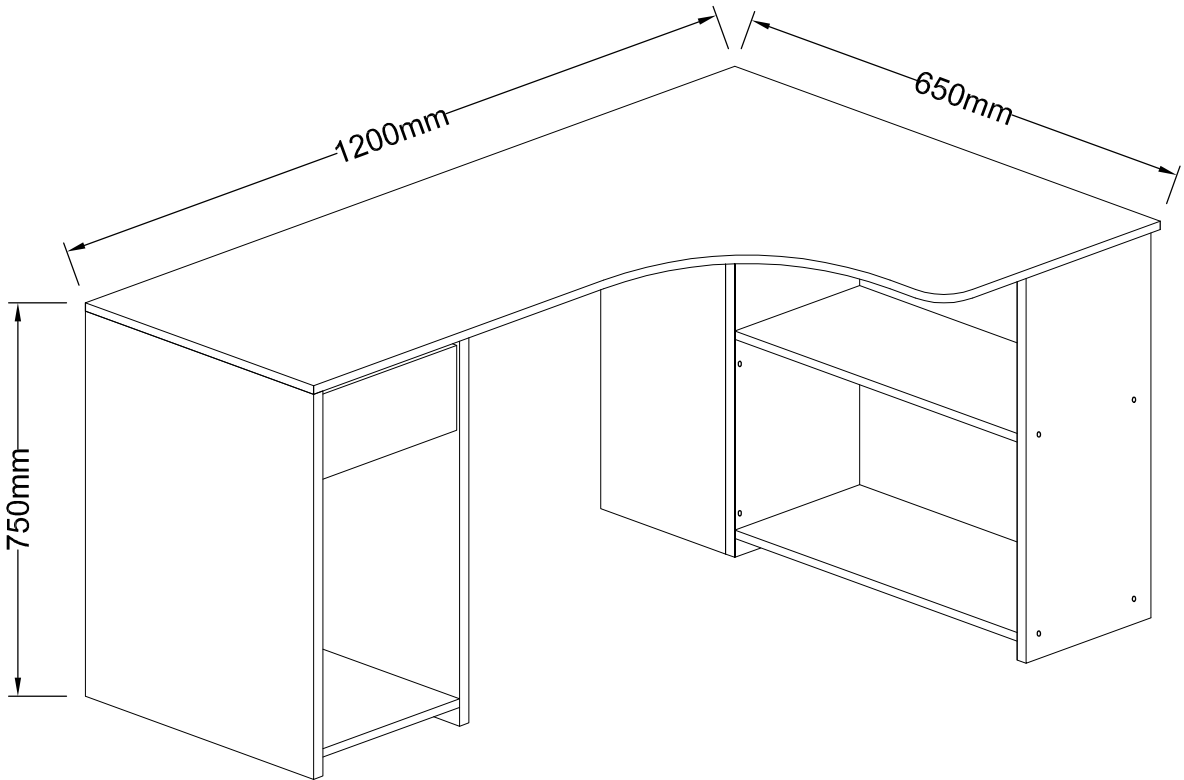
CEILING HEIGHT
2.2M

REQUIRED ASSEMBLY SPACE



REQUIRED ASSEMBLY TOOLS

ASSEMBLED DIMENSIONS



	MODEL NAME: WORKSPACE SOHO L-DESK
--	--

Top Tips before you start :

1. Please check that all parts are present before you start the assembly of your furniture.
2. For ease and speed of assembly, we recommend that before you commence each step of the assembly, that you identify all the parts required for that step.
3. For larger items, please ensure that you have sufficient space and people (as indicated on page 1) to assemble your product safely.
4. We recommend that, where possible, all items are assembled near to the area in which they will be placed in use, to avoid moving the product unnecessarily once assembled.
5. For the protection of your furniture, we recommend that the product is placed on a protected surface during assembly to prevent any damage.
6. During assembly please take care not to over-tighten any fittings, as this may damage the product.
7. Always place the product on a flat, steady and stable surface.
8. Do not sit or stand on the product. Do not use the product as a stepladder.
9. This product is intended for indoor, household use only as it is non industrial product.

Care and Maintenance of your Furniture

- Please periodically check all fittings and re-tighten as necessary.
- To clean your item, please use a damp cloth and wipe clean.
- Never allow any kind of liquid to remain on your furniture. Absorption can cause wood to warp or finishes to de-laminate.
- Please do not place hot items (e.g. Hot drinks) directly on to the surface.
- Please do not drag and pull your furniture.

	WARNING	
--	----------------	--

We recommend you to fix the furniture to the wall with the enclosed safety straps to prevent it from tipping over if a child climbs or hangs on it. Different wall materials require different types of fixing devices, if you are uncertain about what type of screw or fitting to use, please contact your local hardware store.

It is undesirable to place objects of interest to children in view on this type of furniture item, as children may be tempted to climb to retrieve the objects the result that the furniture item may tip and cause injury of death.

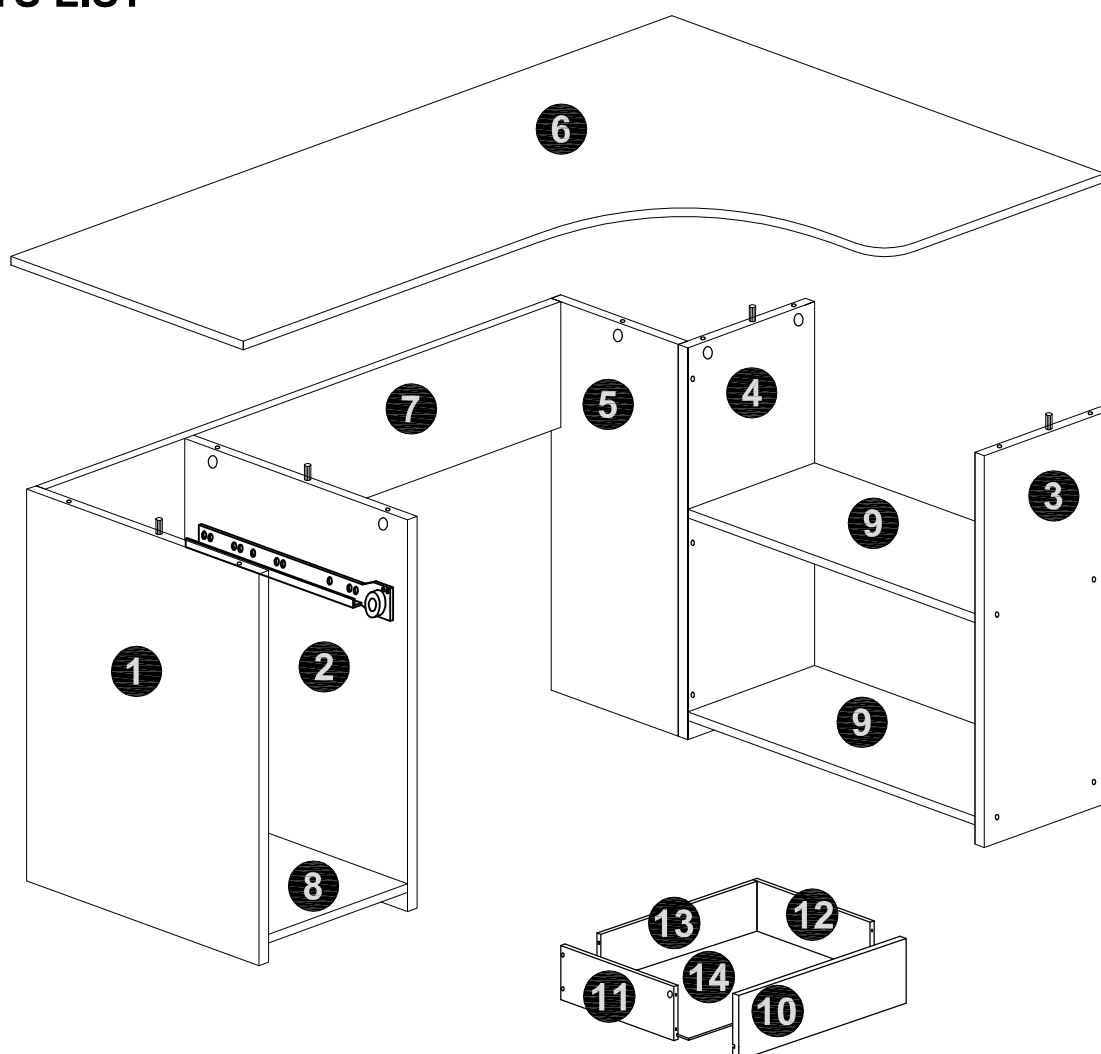
Furniture items can tip under certain circumstances, especially when placed on carpet, uneven or sloping flooring or when subject to extreme use. Therefore care must be taken especially where small children can access any chests of drawers or bookcases or similar furniture items.

MODEL NAME:

WORKSPACE SOHO L-DESK

NO.	PART LIST	QTY	NO.	PART LIST	QTY
(1)	LEFT SIDE PANEL	1	(10)	DRAWER FRONT	1
(2)	CENTRE PANEL -LEFT	1	(11)	SMALL DRAWER SIDE (LEFT)	1
(3)	RIGHT SIDE PANEL	1	(12)	SMALL DRAWER SIDE (RIGHT)	1
(4)	BACK SUPPORT RIGHT	1	(13)	SMALL DRAWER BACK PANEL	1
(5)	BACK SUPPORT LEFT	1	(14)	DRAWER BASE	1
(6)	TABLE TOP	1			
(7)	TABLE TOP SUPPORT	1			
(8)	FIX PANEL LEFT	1			
(9)	FIX PANEL RIGHT	2			



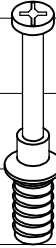

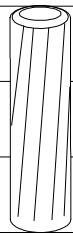
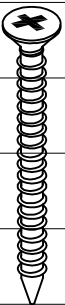
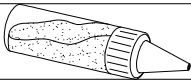

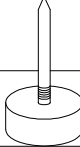
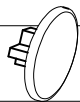
PARTS LIST



MODEL NAME:

WORKSPACE SOHO L-DESK

HARDWARE LIST

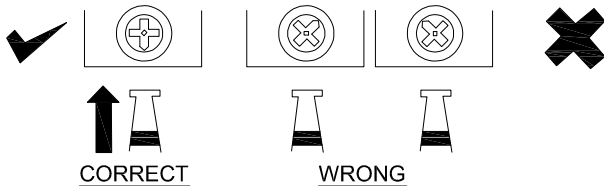
					4cm
					3cm
					2cm
					1cm
					0cm
13X Dia.13mm	12X Dia.15mm	19X M6.5	4X M3.5 x 25mm	10X Dia.6 x 30mm	
A SCREW COVER (OPTIONAL)	B LARGE CAM-LOCK	C CAM BOLT	D FLAT HEAD SCREW	E WOOD DOWEL	
					4cm
					3cm
					2cm
					1cm
					0cm
13X M8 x 38mm	1X	7X Dia.15mm	10X	7X Dia 17mm	
F FLAT HEAD SCREW	G GLUE 10CC	H SMALL CAMLOCK	I FOOT	J UNIVERSAL CAP (OPTIONAL)	

MODEL NAME:

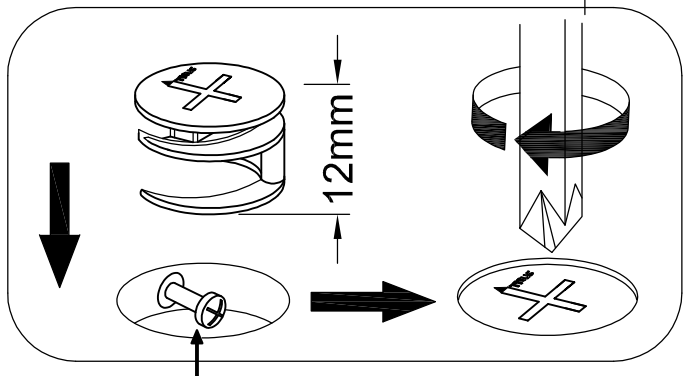
WORKSPACE SOHO
L-DESK

SPECIAL TIPS FOR FITTING CAM-LOCKS AND CAM BOLT

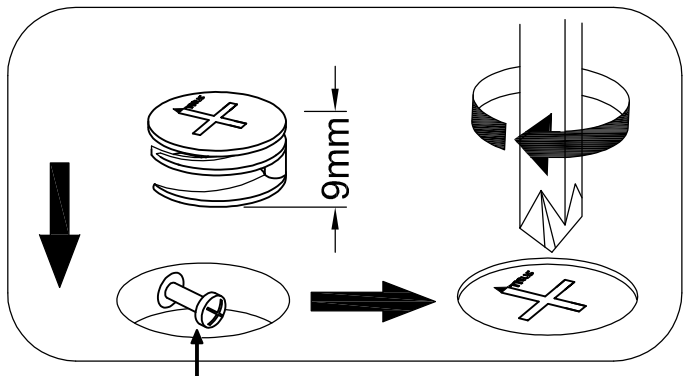
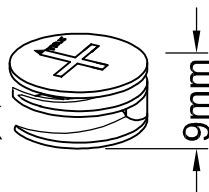
WHEN FITTING CAMLOCK
ENSURE STARTING POSITION IS CORRECT
BEFORE YOU INSERT CONNECTING QUICKFIT
TURN CLOCKWISE UNTIL SECURE



**LARGE
CAM-LOCK**

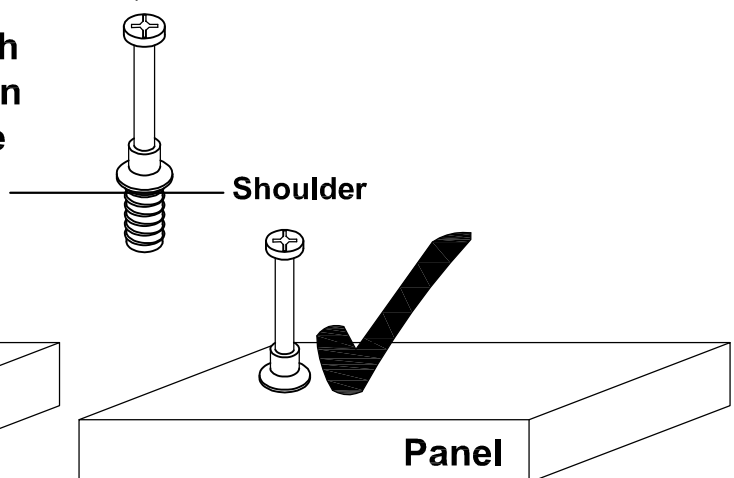
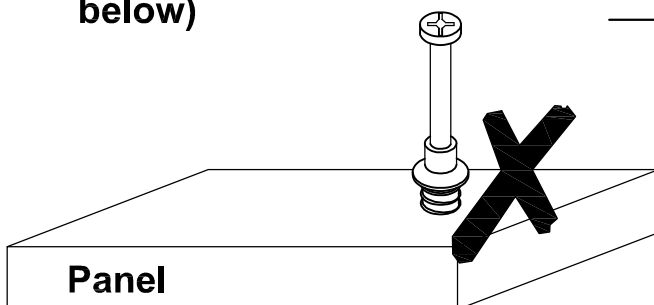


**SMALL
CAM-LOCK**



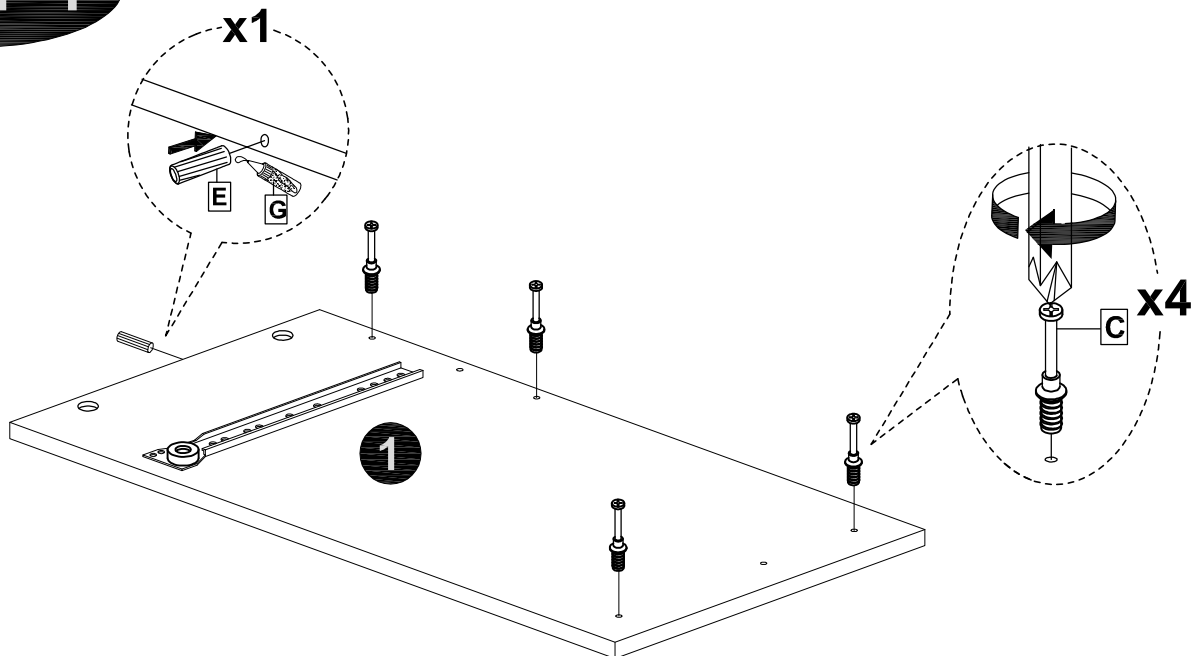
QUICKFIT

Tighten until shoulder is flush
with panel. Do not overtighten
or undertighten (see example
below)

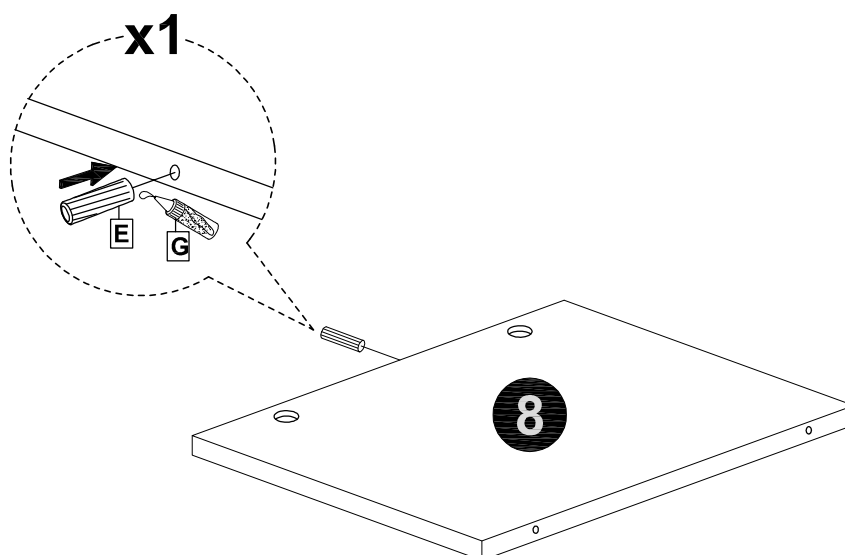


MODEL NAME: **WORKSPACE SOHO
L-DESK**

STEP 1



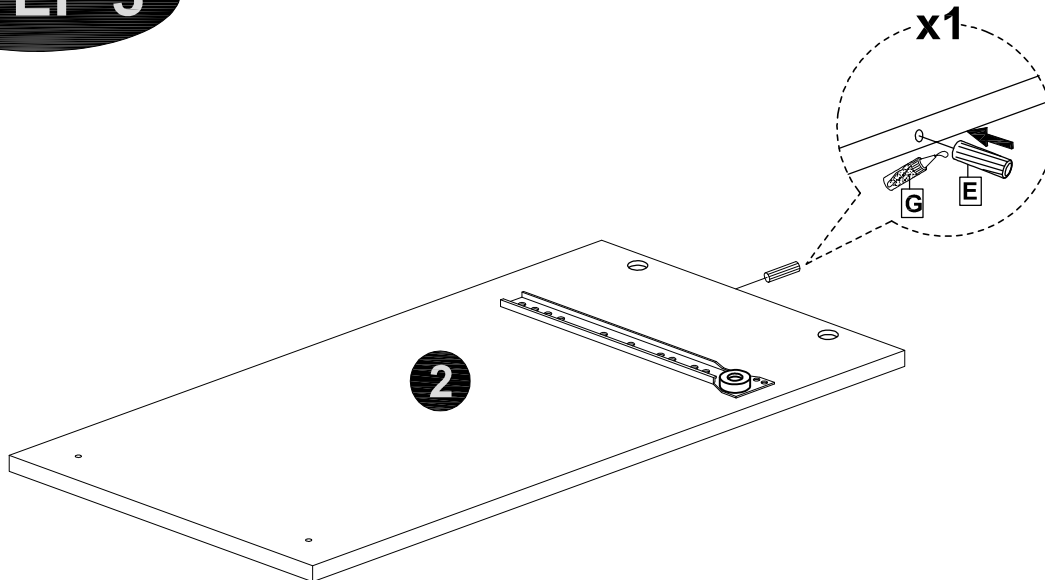
STEP 2



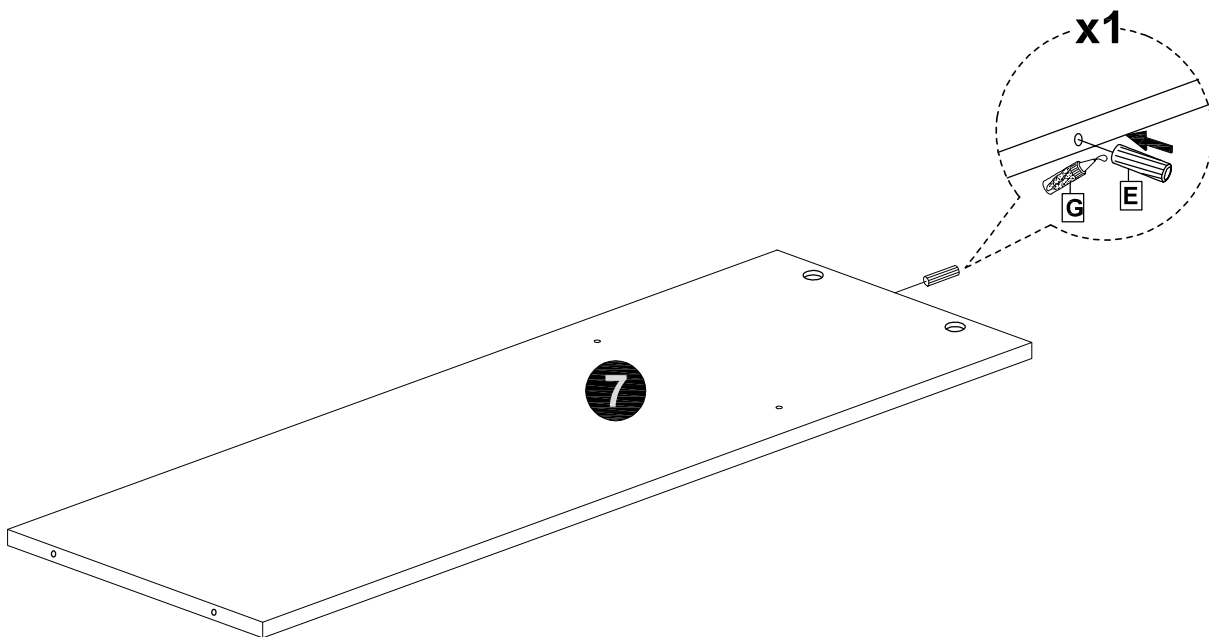
MODEL NAME:

**WORKSPACE SOHO
L-DESK**

STEP 3

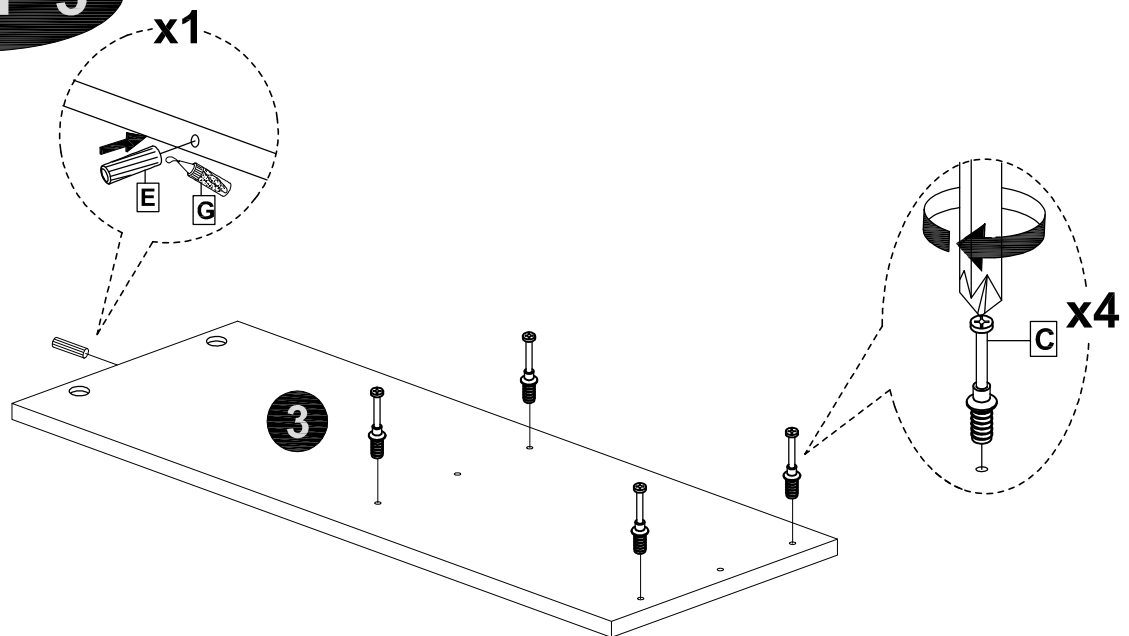


STEP 4

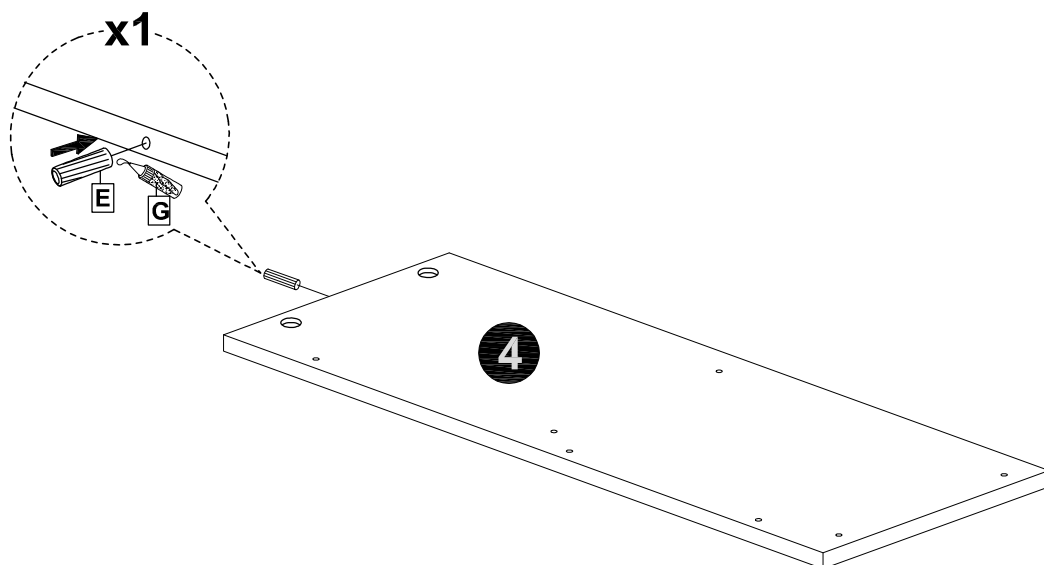


MODEL NAME: **WORKSPACE SOHO**
L-DESK

STEP 5

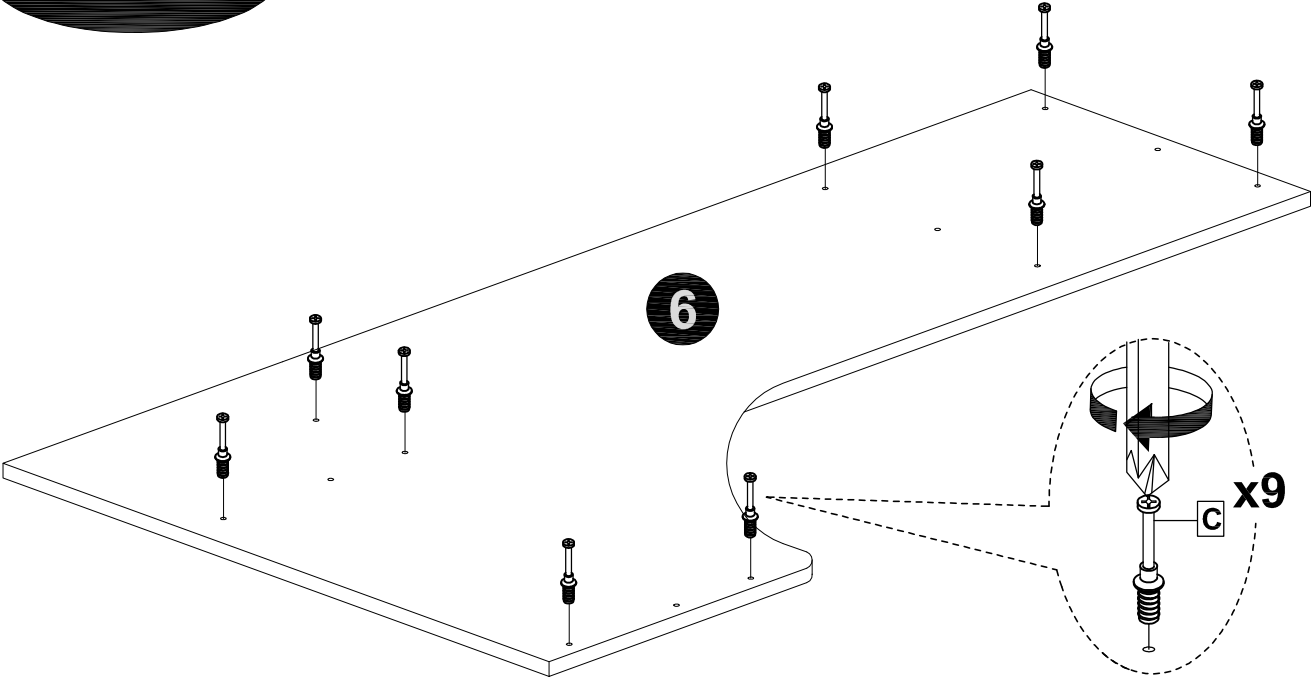


STEP 6

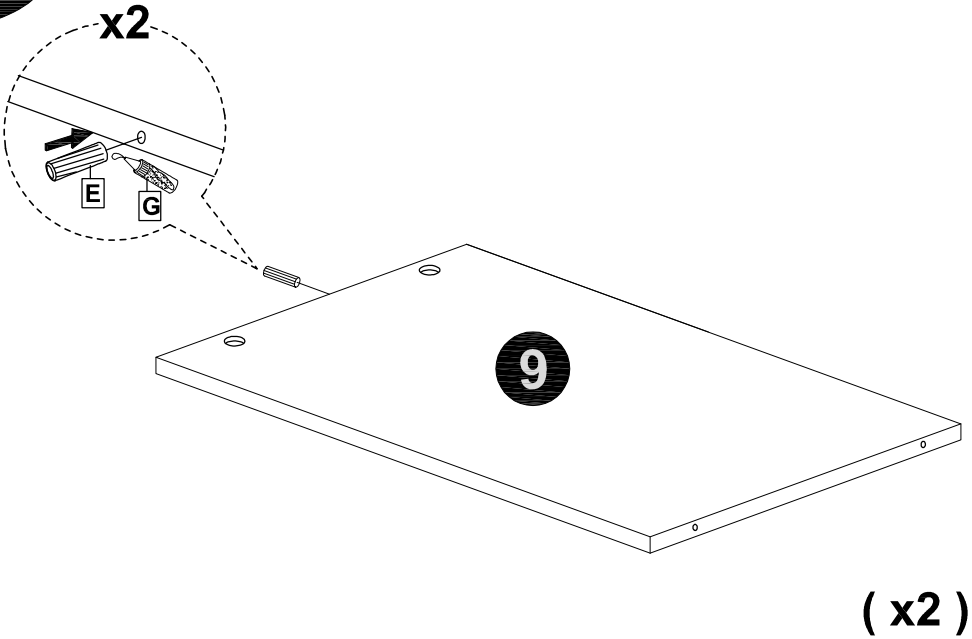


MODEL NAME: **WORKSPACE SOHO
L-DESK**

STEP 7



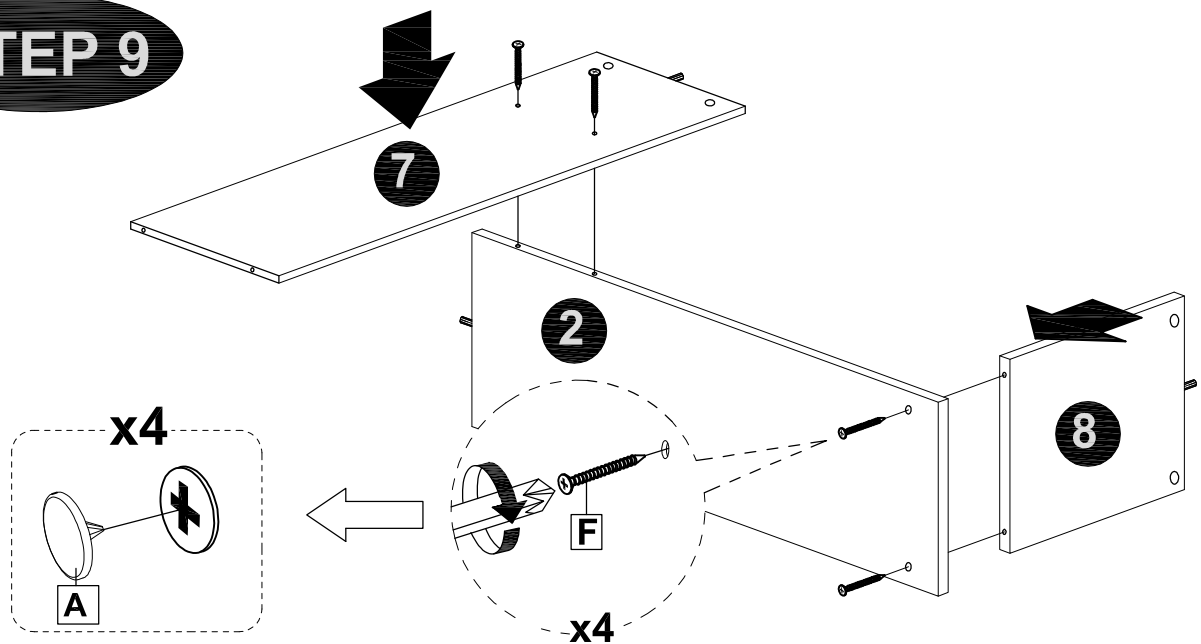
STEP 8



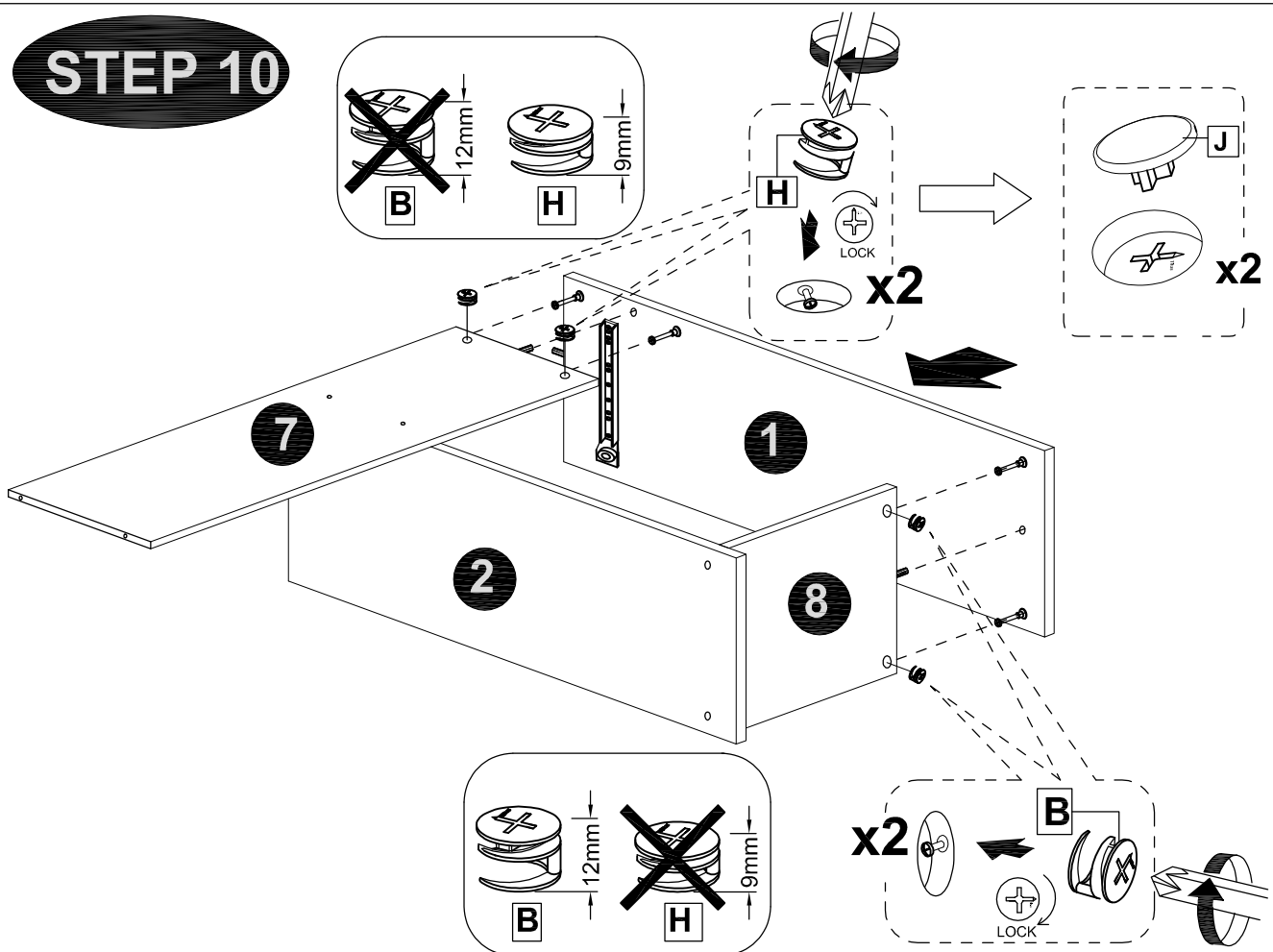
MODEL NAME:

WORKSPACE SOHO L-DESK

STEP 9



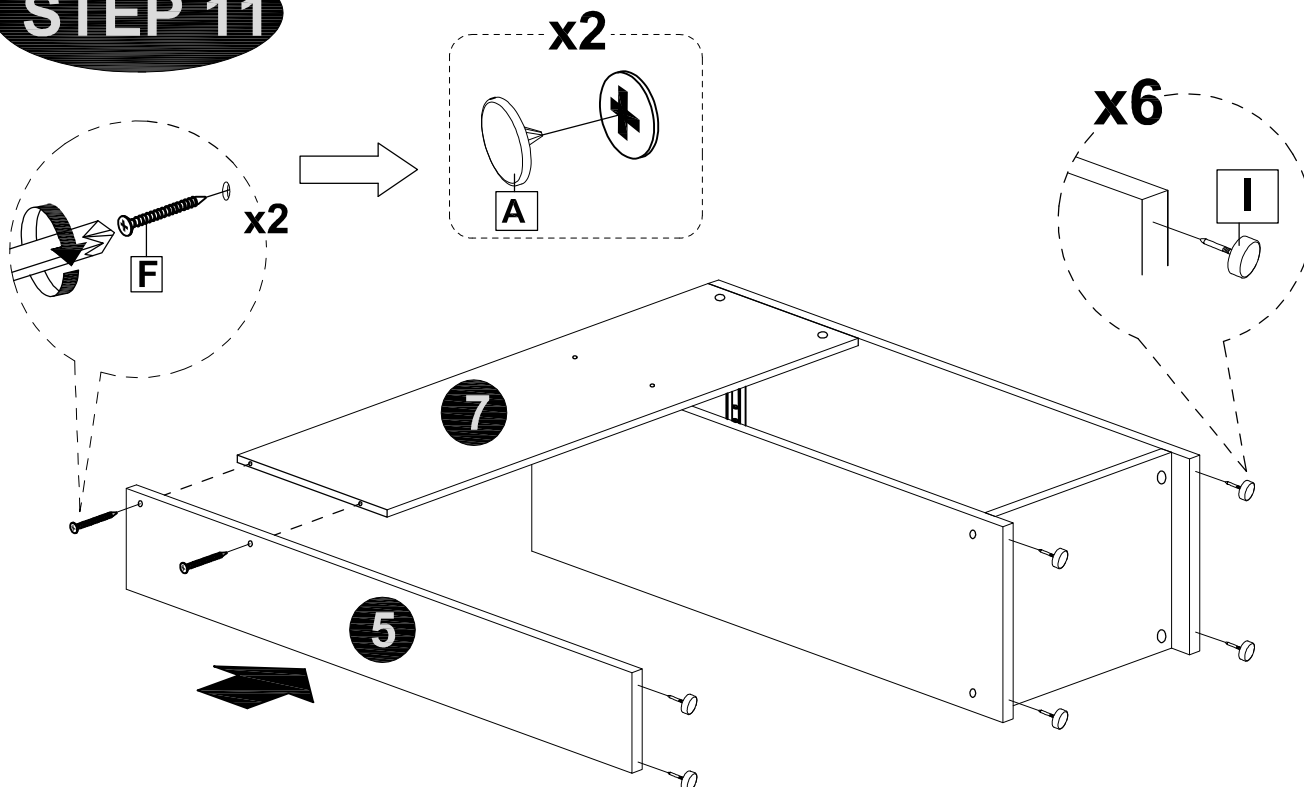
STEP 10



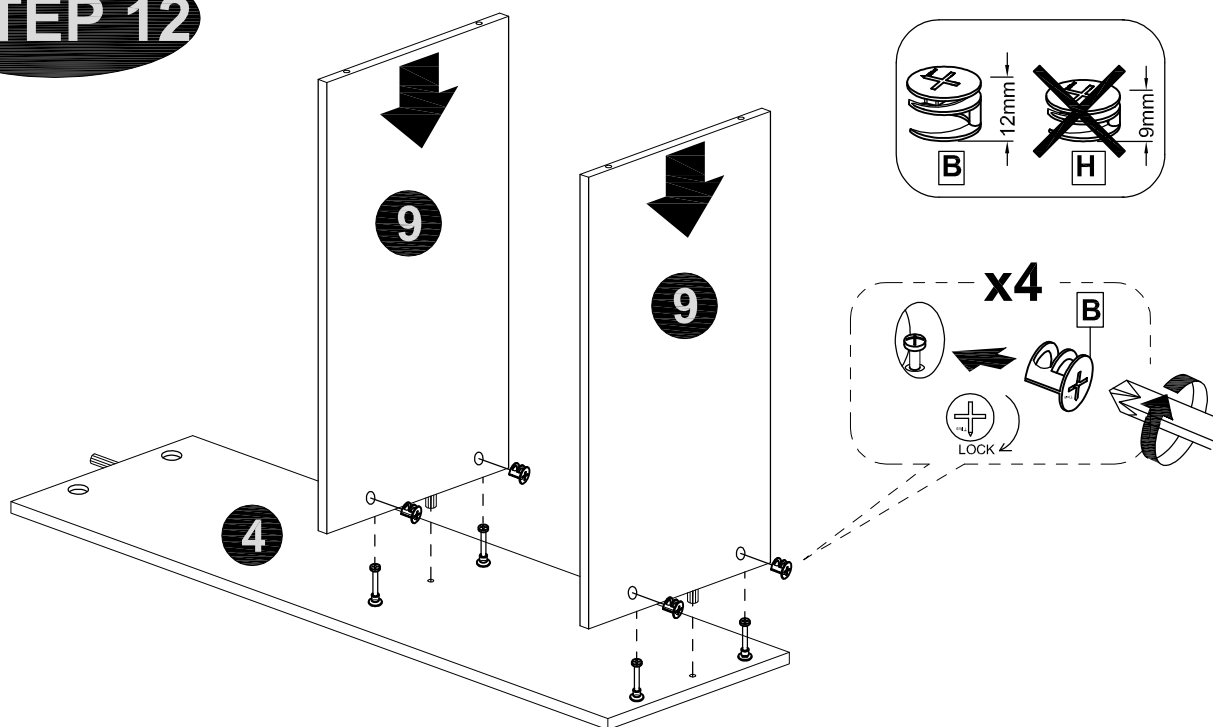
MODEL NAME:

**WORKSPACE SOHO
L-DESK**

STEP 11



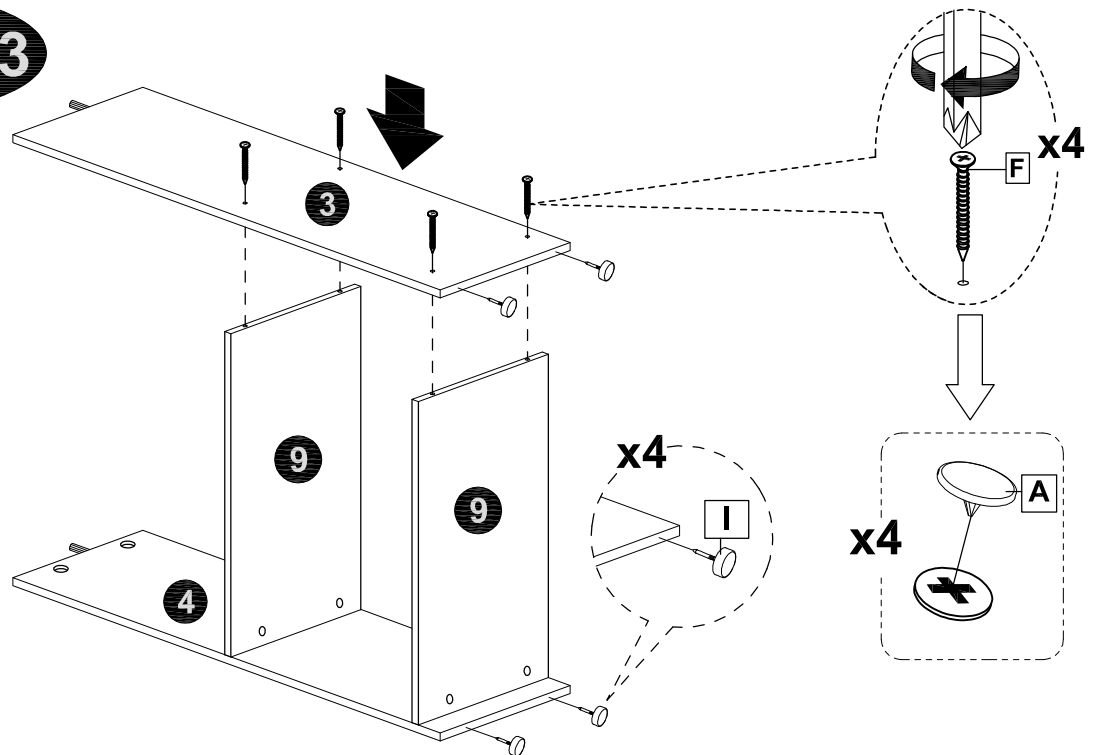
STEP 12



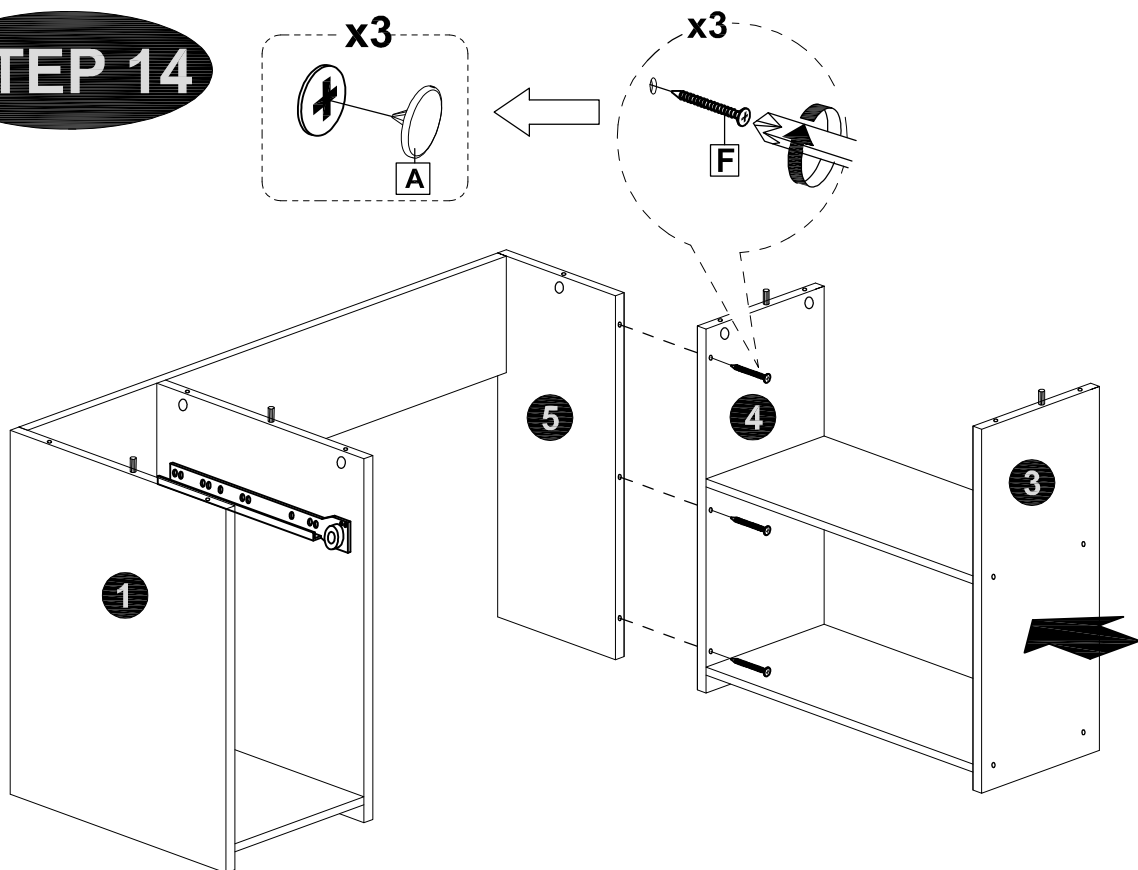
MODEL NAME:

**WORKSPACE SOHO
L-DESK**

STEP 13



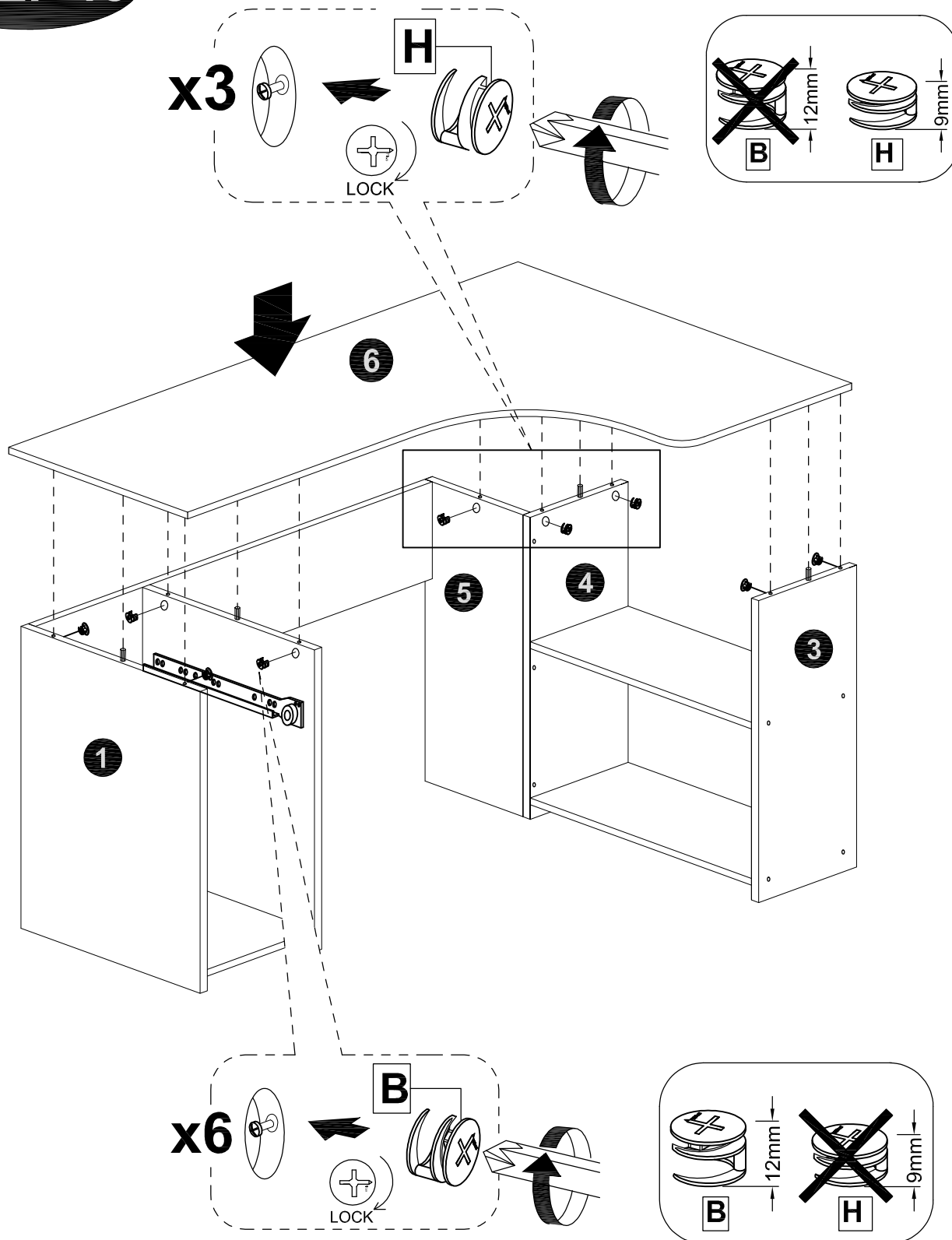
STEP 14



MODEL NAME:

WORKSPACE SOHO
L-DESK

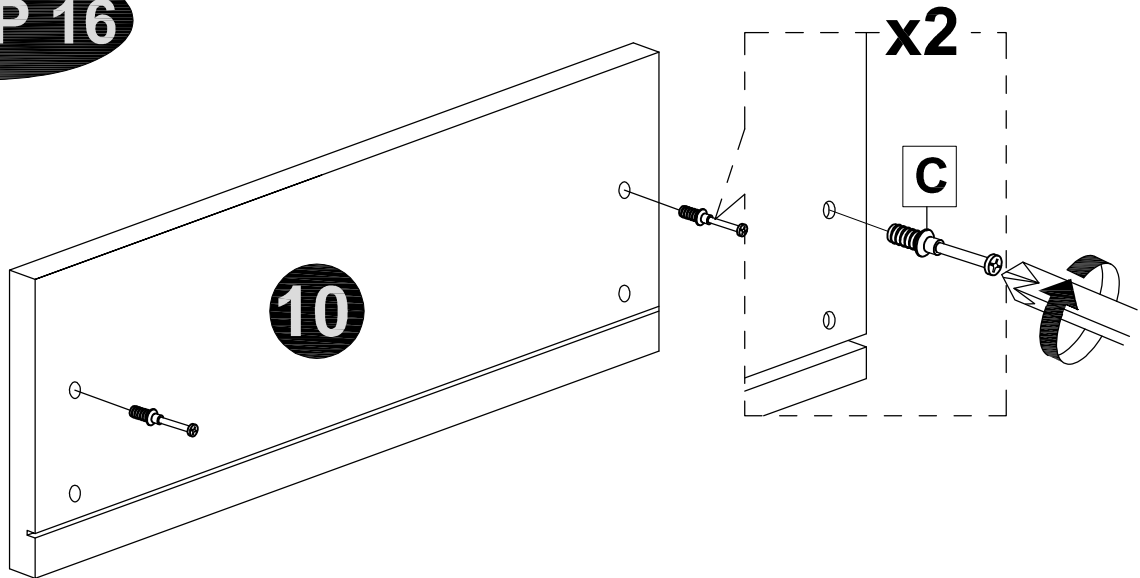
STEP 15



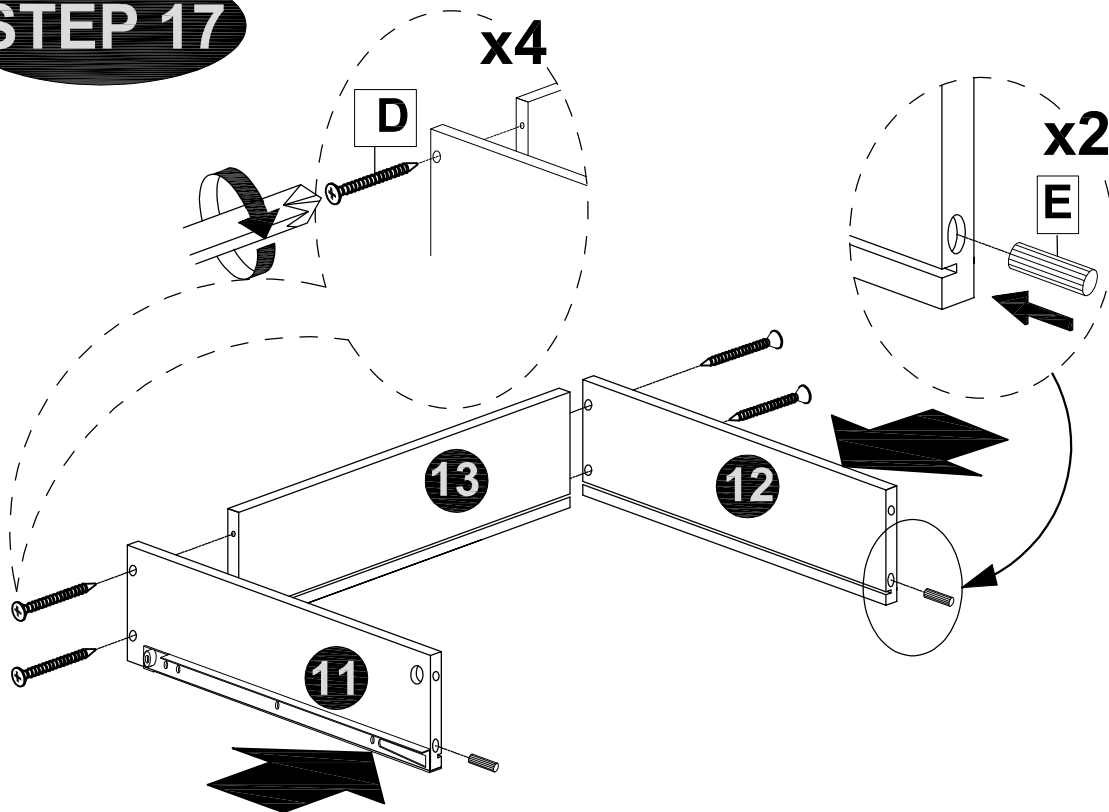
MODEL NAME:

WORKSPACE SOHO
L-DESK

STEP 16



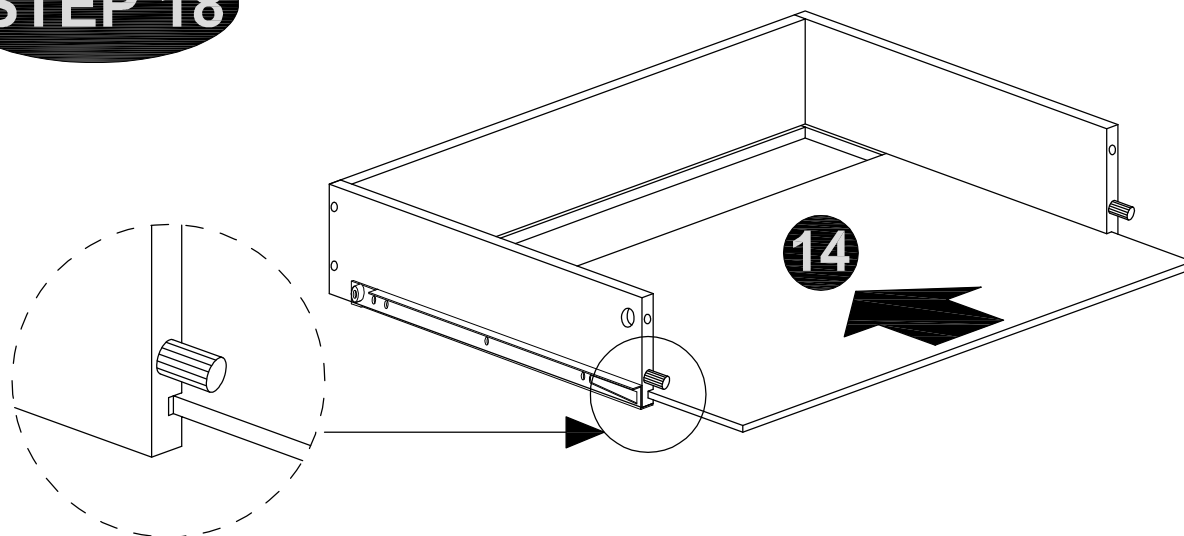
STEP 17



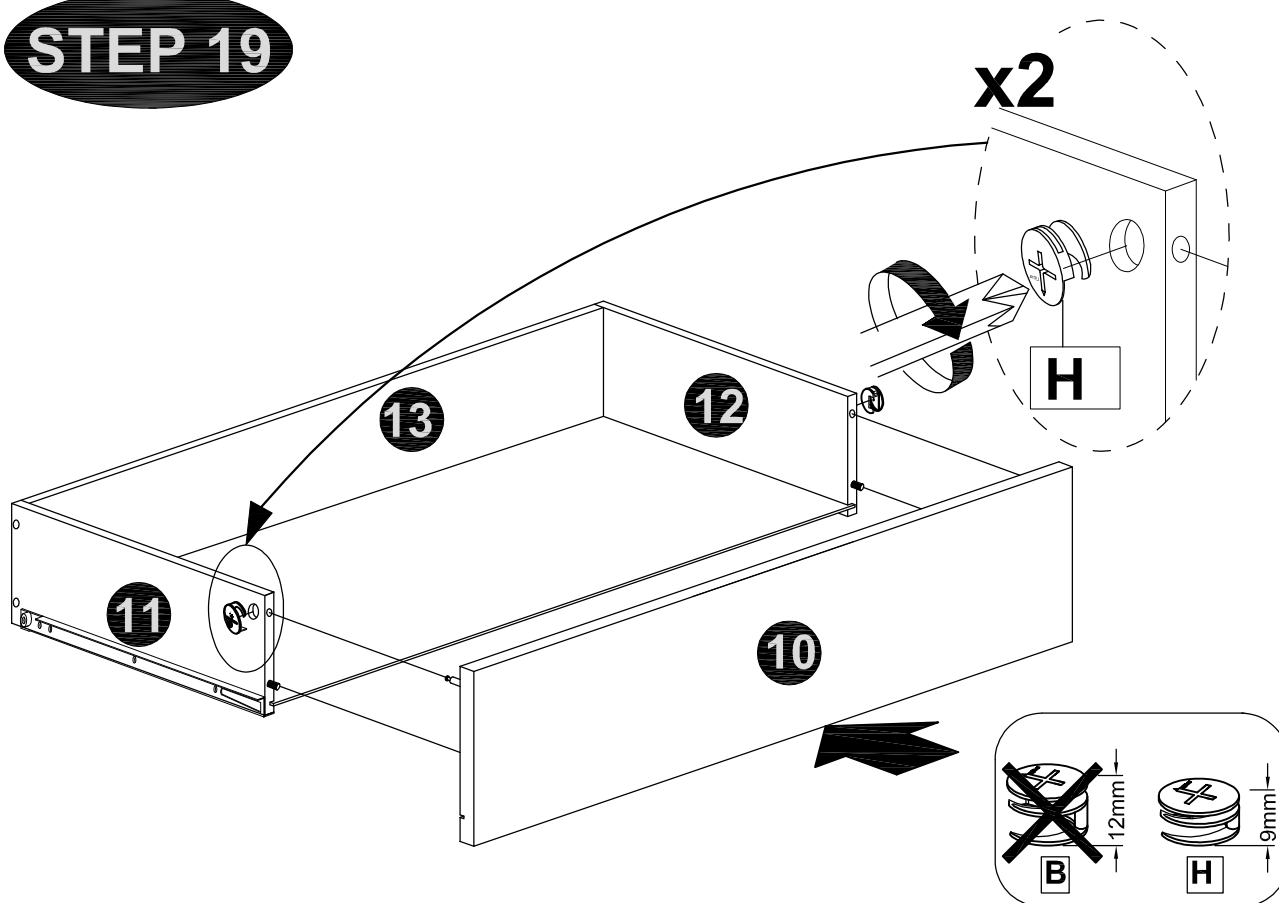
MODEL NAME:

**WORKSPACE SOHO
L-DESK**

STEP 18



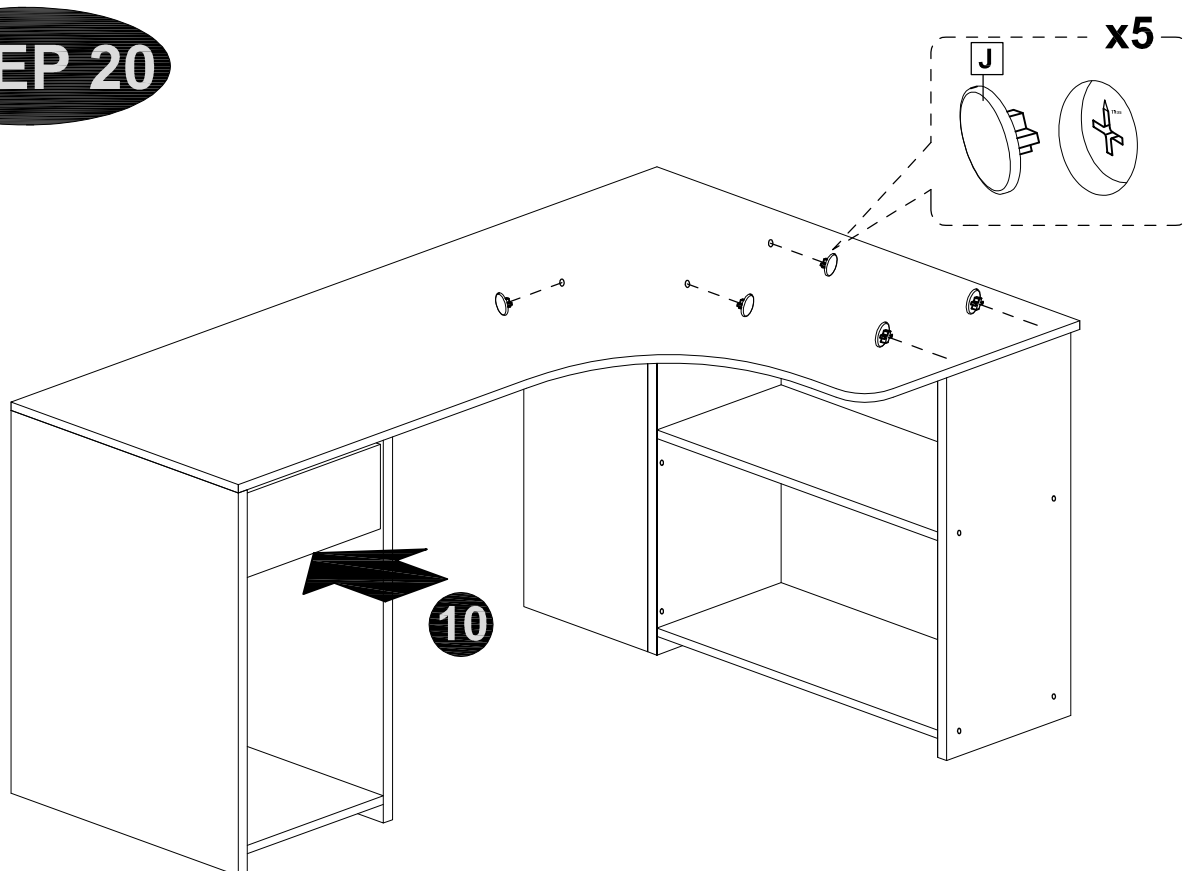
STEP 19



MODEL NAME:

**WORKSPACE SOHO
L-DESK**

STEP 20



STEP 21

