

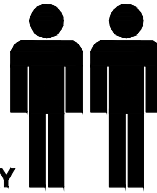
MODEL NAME:

HAVARD 1500 DESK

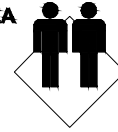
0.5hr

APPROXIMATE ASSEMBLY TIME

2 PERSONS OF ASSEMBLY

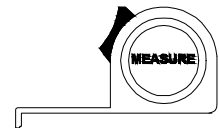
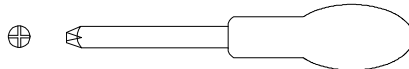
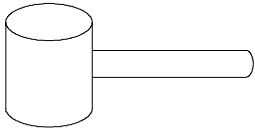


**FLOOR AREA
2 M X 1.5M**

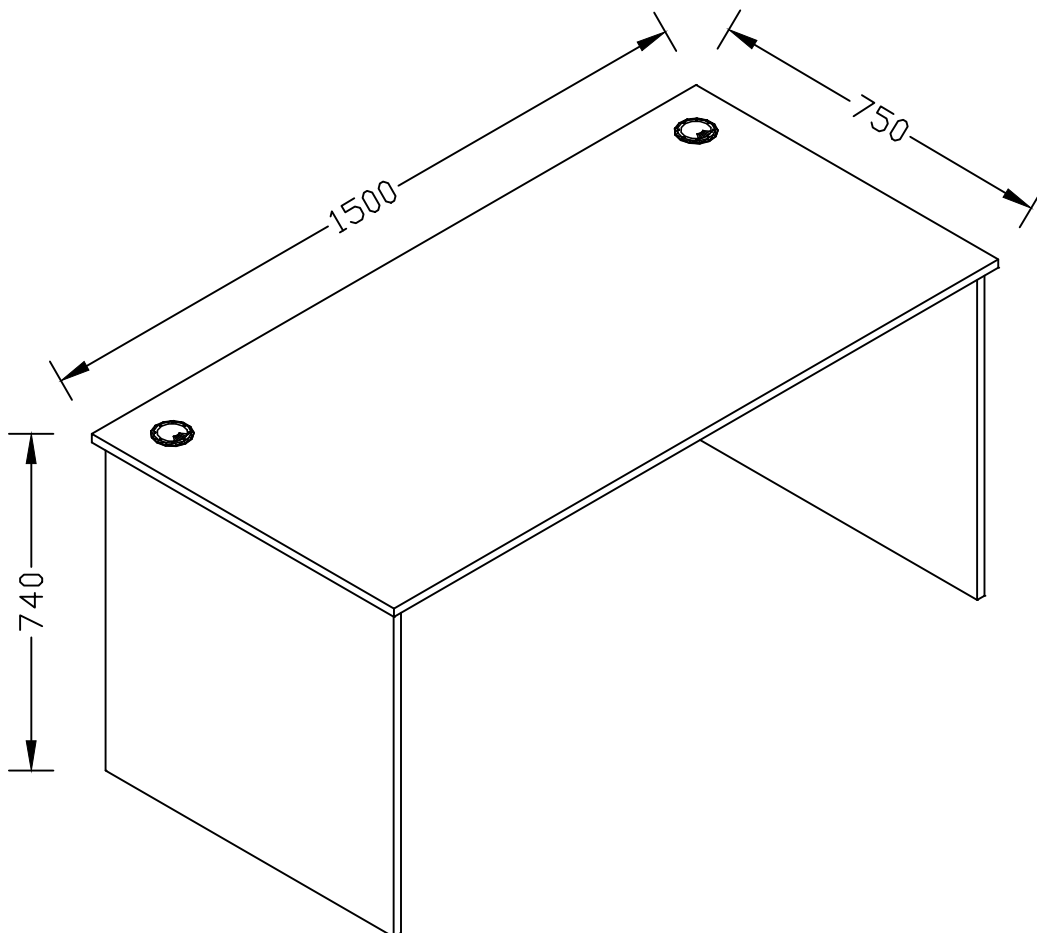


REQUIRED ASSEMBLY SPACE

REQUIRED ASSEMBLY TOOLS



ASSEMBLED DIMENSIONS



MAXIMUM WEIGH ACROSS THE DESK 50KG

MODEL NAME:**HAVARD 1500 DESK****Top Tips before you start :**

1. Please check that all parts are present before you start the assembly of your furniture.
2. For ease and speed of assembly, we recommend that before you commence each step of the assembly, that you identify all the parts required for that step.
3. For larger items, please ensure that you have sufficient space and people (as indicated on page 1) to assemble your product safely.
4. We recommend that, where possible, all items are assembled near to the area in which they will be placed in use, to avoid moving the product unnecessarily once assembled.
5. For the protection of your furniture, we recommend that the product is placed on a protected surface during assembly to prevent any damage.
6. During assembly please take care not to over-tighten any fittings, as this may damage the product.
7. Always place the product on a flat, steady and stable surface.
8. Do not sit or stand on the product. Do not use the product as a stepladder.
9. This product is intended for indoor, household use only as it is non industrial product.

Care and Maintenance of your Furniture

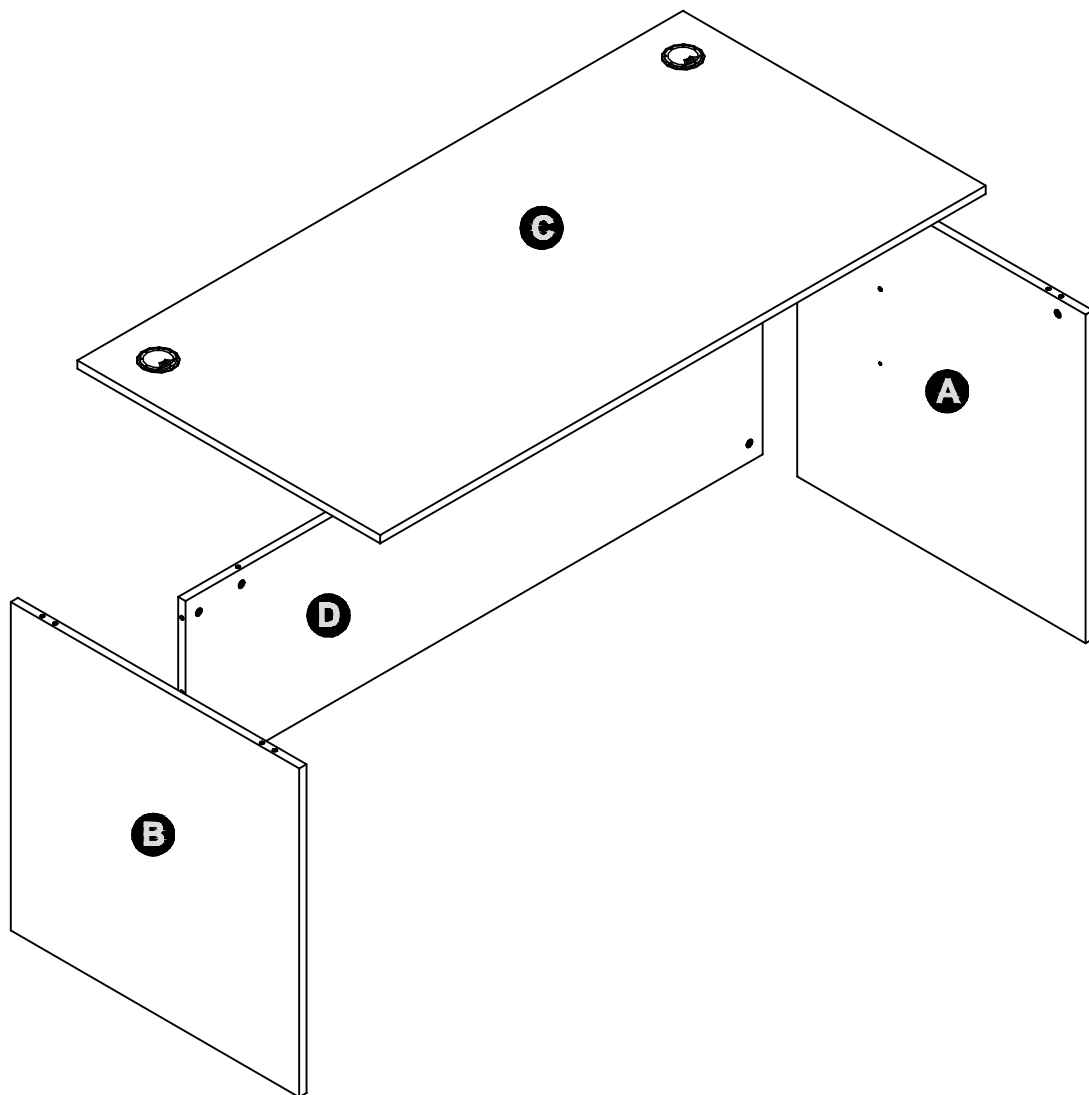
- Please periodically check all fittings and re-tighten as necessary.
- To clean your item, please use a damp cloth and wipe clean.
- Never allow any kind of liquid to remain on your furniture. Absorption can cause wood to warp or finishes to de-laminate.
- Please do not place hot items (e.g. Hot drinks) directly on to the surface.
- Please do not drag and pull your furniture.

MODEL NAME:

HAVARD 1500 DESK

NO.	PART LIST	QTY	NO.	PART LIST	QTY
(A)	RIGHT SIDE PANEL	1	(C)	TOP PANEL	1
(B)	LEFT SIDE PANEL	1	(D)	SUPPORT PANEL	1

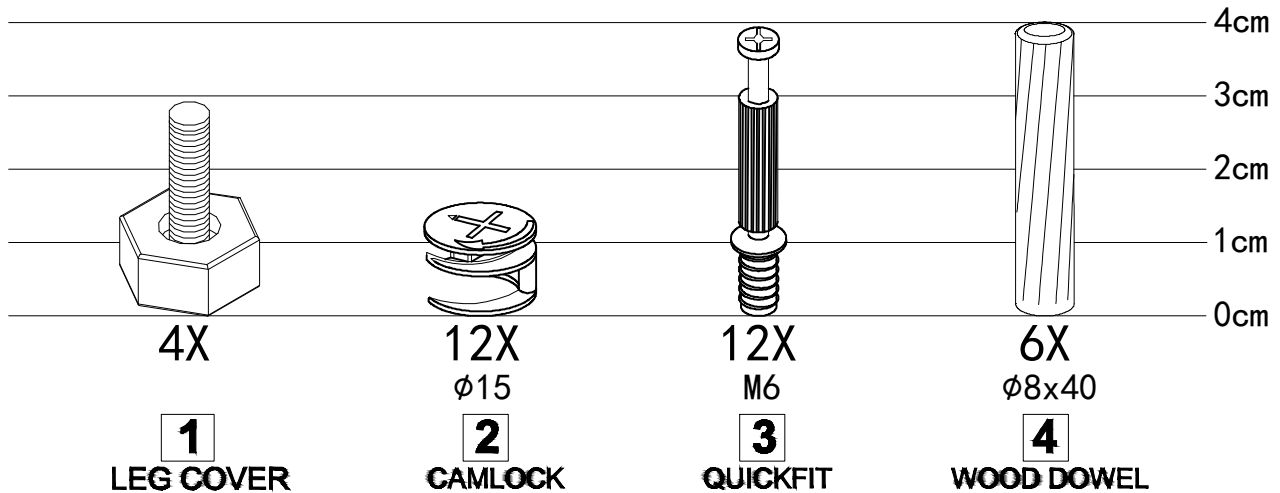
PARTS LIST



MODEL NAME:

HAVARD 1500 DESK

HARDWARE LIST

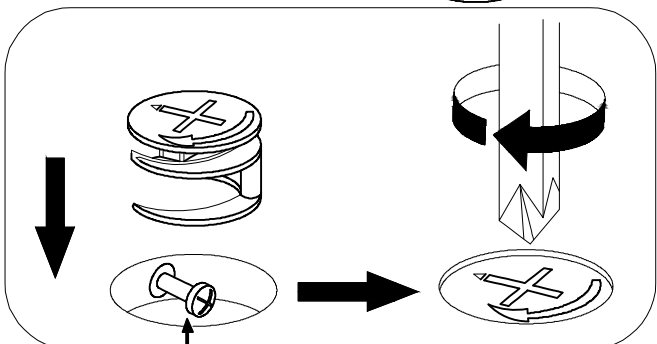
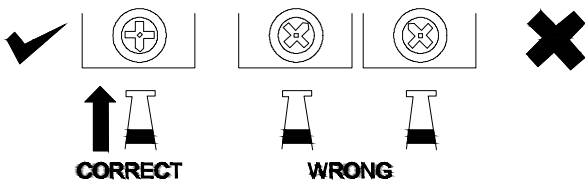


SPECIAL TIPS FOR FITTING CAM-LOCKS AND QUICKFIT

CAM-LOCK



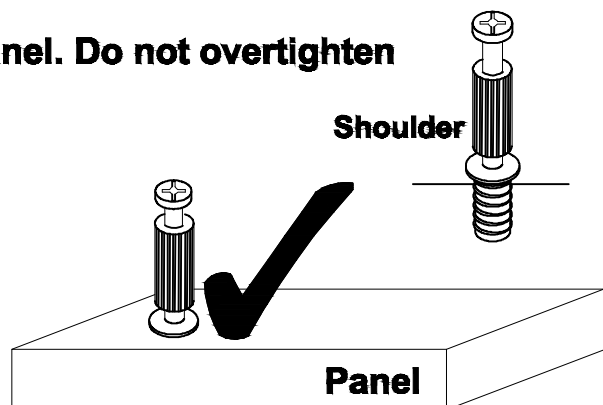
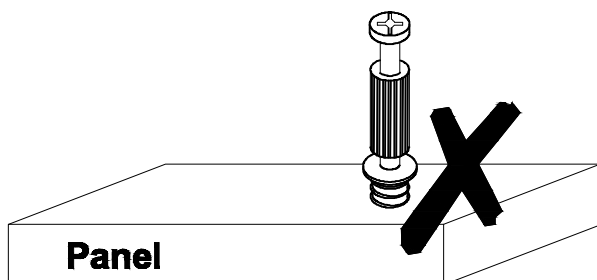
WHEN FITTING CAMLOCK
ENSURE STARTING POSITION IS CORRECT
BEFORE YOU INSERT CONNECTING QUICKFIT
TURN CLOCKWISE UNTIL SECURE



Quickfit head needs to be in centre

QUICKFIT

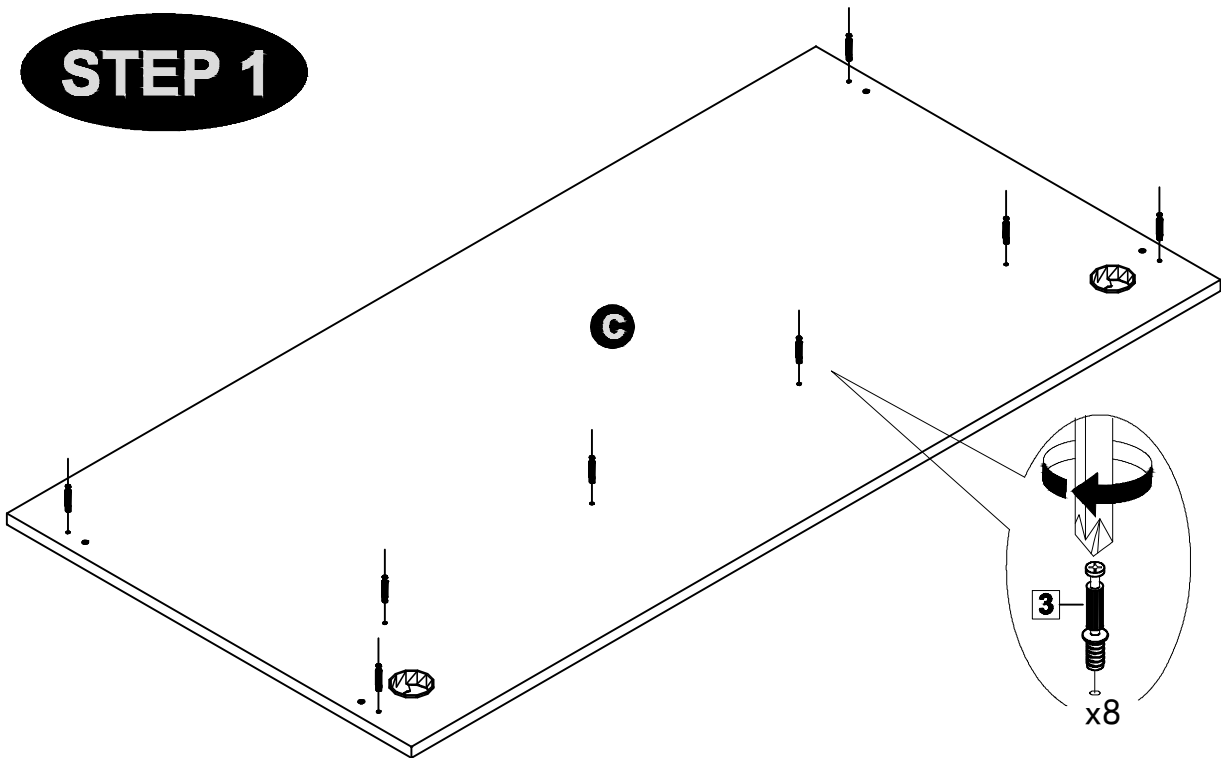
Tighten until shoulder is flush with panel. Do not overtighten or undertighten (see example below)



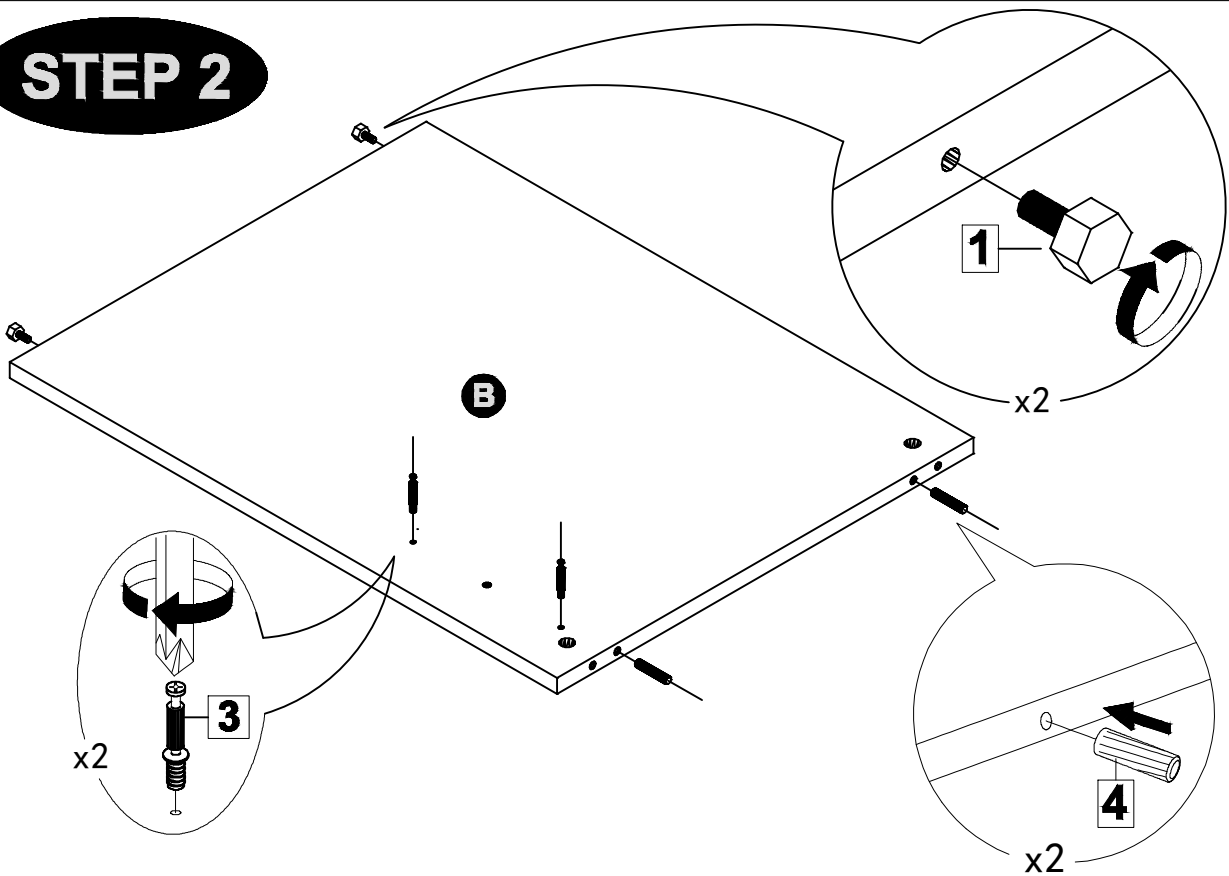
MODEL NAME:

HAVARD 1500 DESK

STEP 1



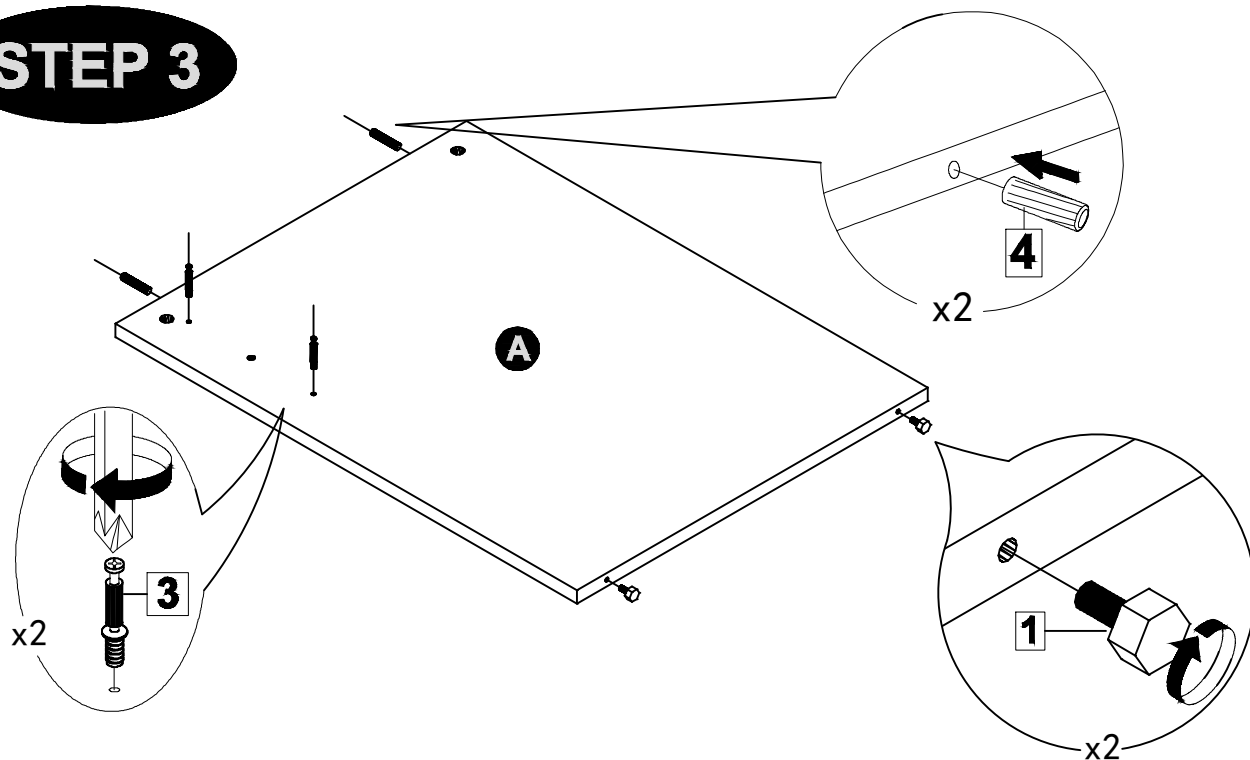
STEP 2



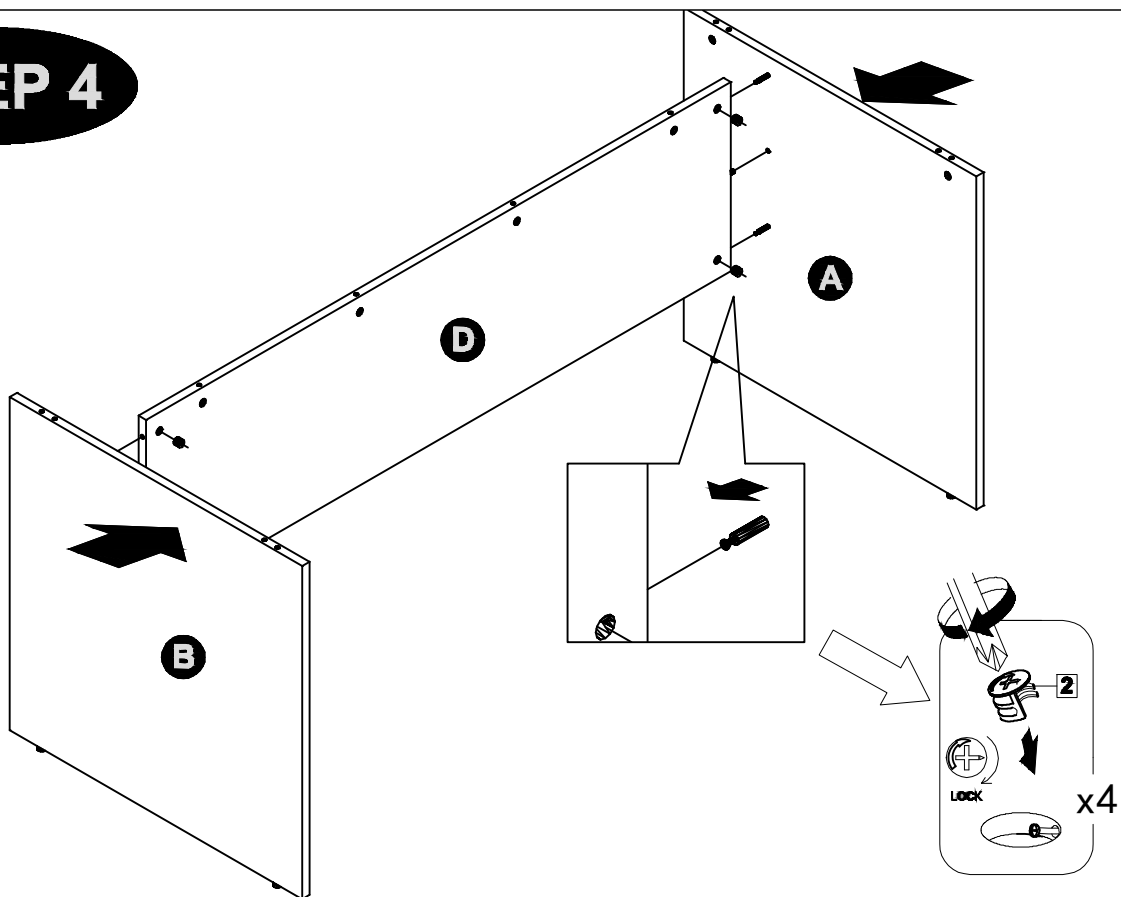
MODEL NAME:

HAVARD 1500 DESK

STEP 3



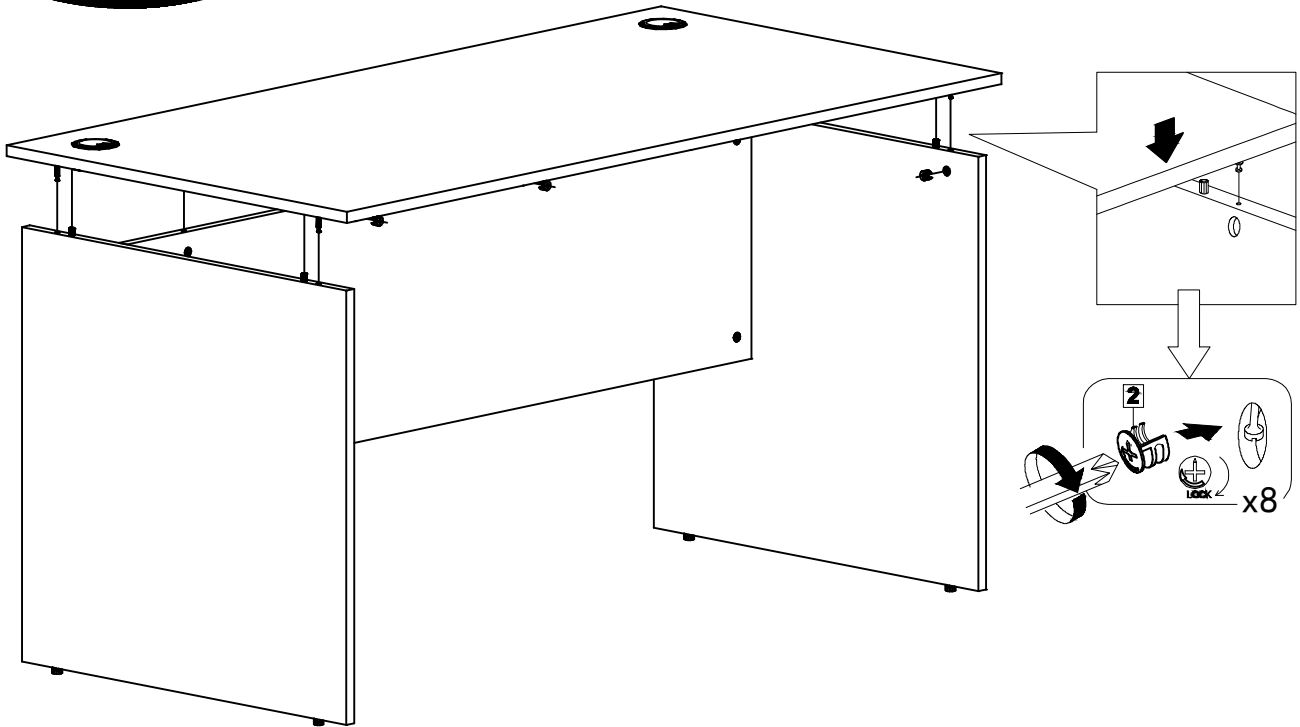
STEP 4



MODEL NAME:

HAVARD 1500 DESK

STEP 5



STEP 6

