

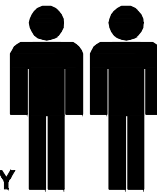
MODEL NAME:

HAVARD CADDY

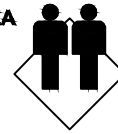
1.5hr

APPROXIMATE ASSEMBLY TIME

2 PERSONS OF ASSEMBLY

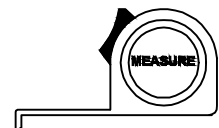
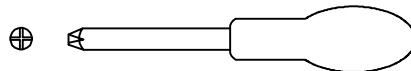
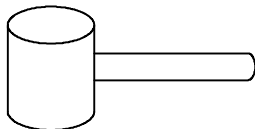


FLOOR AREA
1.5M X 1.5M

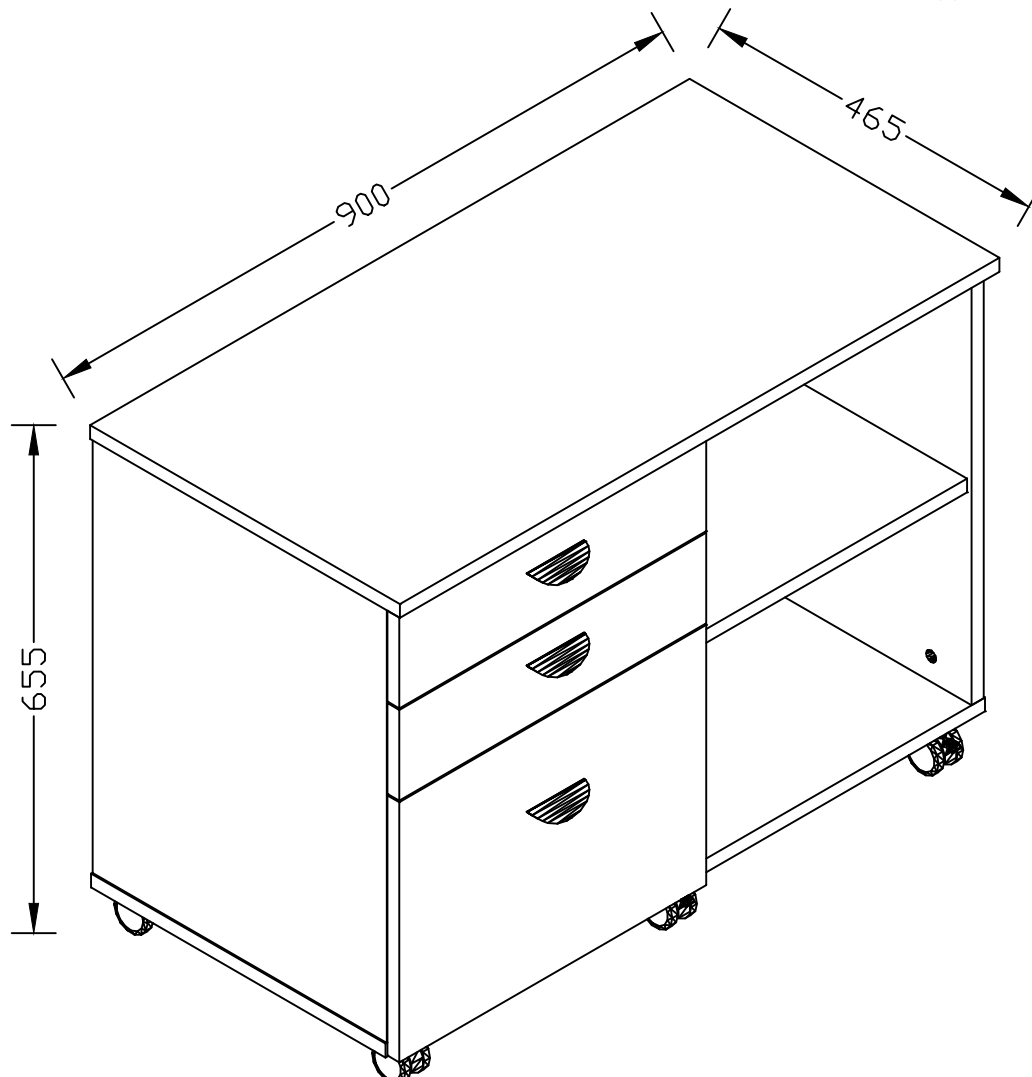


REQUIRED ASSEMBLY SPACE

REQUIRED ASSEMBLY TOOLS



ASSEMBLED DIMENSIONS



MAXIMUM WEIGH ACROSS THE TOP 30KG
MAXIMUM WEIGH PER DRAWER 15KG

	MODEL NAME:
	HAVARD CADDY

Top Tips before you start :

1. Please check that all parts are present before you start the assembly of your furniture.
2. For ease and speed of assembly, we recommend that before you commence each step of the assembly, that you identify all the parts required for that step.
3. For larger items, please ensure that you have sufficient space and people (as indicated on page 1) to assemble your product safely.
4. We recommend that, where possible, all items are assembled near to the area in which they will be placed in use, to avoid moving the product unnecessarily once assembled.
5. For the protection of your furniture, we recommend that the product is placed on a protected surface during assembly to prevent any damage.
6. During assembly please take care not to over-tighten any fittings, as this may damage the product.
7. Always place the product on a flat, steady and stable surface.
8. Do not sit or stand on the product. Do not use the product as a stepladder.
9. This product is intended for indoor, household use only as it is non industrial product.

Care and Maintenance of your Furniture

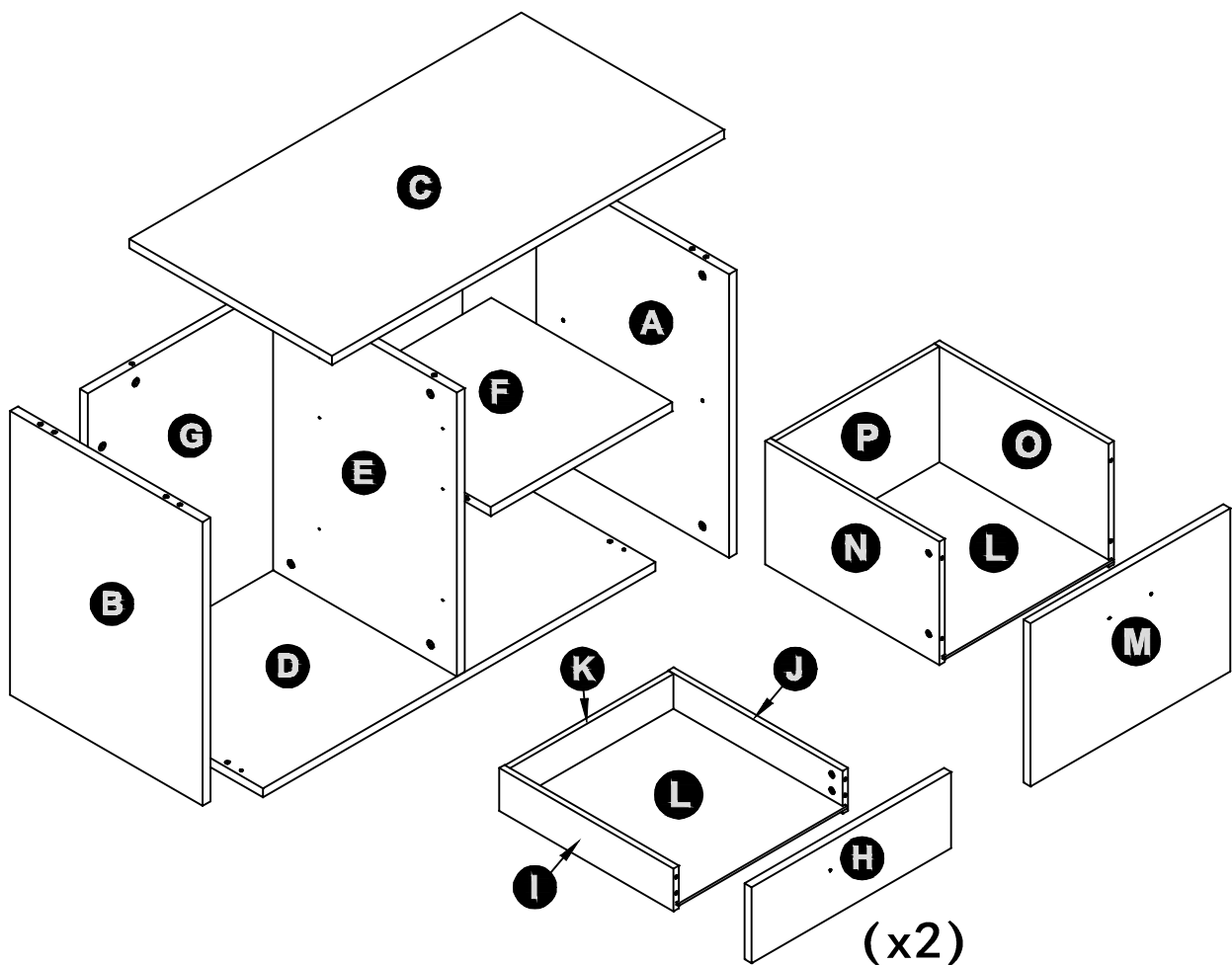
- Please periodically check all fittings and re-tighten as necessary.
- To clean your item, please use a damp cloth and wipe clean.
- Never allow any kind of liquid to remain on your furniture. Absorption can cause wood to warp or finishes to de-laminate.
- Please do not place hot items (e.g. Hot drinks) directly on to the surface.

MODEL NAME:

HAVARD CADDY

NO.	PART LIST	QTY	NO.	PART LIST	QTY
(A)	RIGHT SIDE PANEL	1	(I)	DRAWER LEFT SIDE PANEL	2
(B)	LEFT SIDE PANEL	1	(J)	DRAWER RIGHT SIDE PANEL	2
(C)	TOP PANEL	1	(K)	DRAWER BACK PANEL	2
(D)	BOTTOM PANEL	1	(L)	DRAWER BASE	3
(E)	INTERMEDIATE PANEL	1	(M)	DRAWER FRONT	1
(F)	LAYER PANEL	1	(N)	DRAWER LEFT SIDE PANEL	1
(G)	BACK PANEL	1	(O)	DRAWER RIGHT SIDE PANEL	1
(H)	DRAWER FRONT	2	(P)	DRAWER BACK PANEL	1

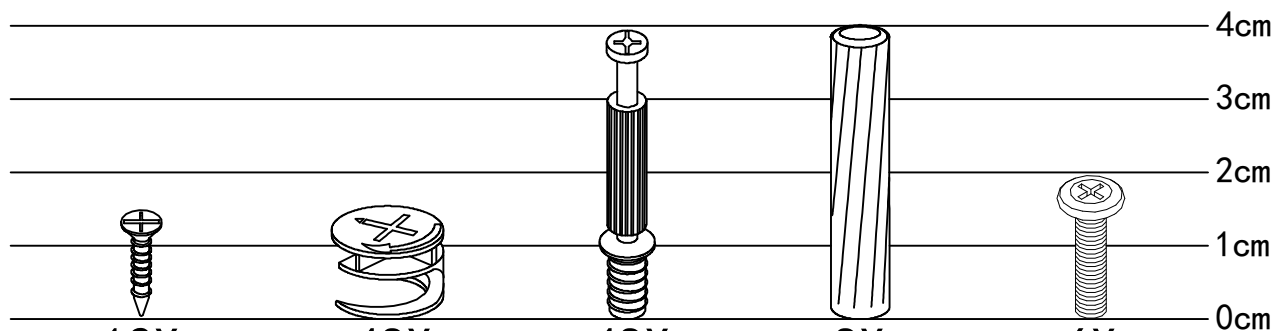
PARTS LIST



MODEL NAME:

HAVARD CADDY

HARDWARE LIST




12X
M4x14
1
FLAT HEAD
SCREW

48X
ø15
2
CAMLOCK

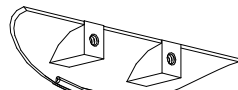
48X
M6
3
QUICKFIT

8X
ø8x40
4
WOOD DOWEL

6X
M4x18
5
PAN HEAD
SCREW



45X
M4x16
6
FLAT HEAD
SCREW



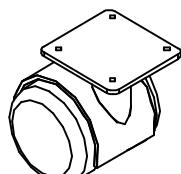
3X
7
HANDLE



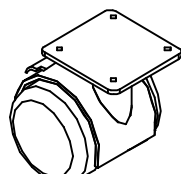
2X
8
DRAWER
RUNNER
-350mm



1X
9
DRAWER
RUNNER
-400mm



3X
H=55mm
10
CASTORS



3X
H=55mm
11
CASTORS
BRAKE

MODEL NAME:

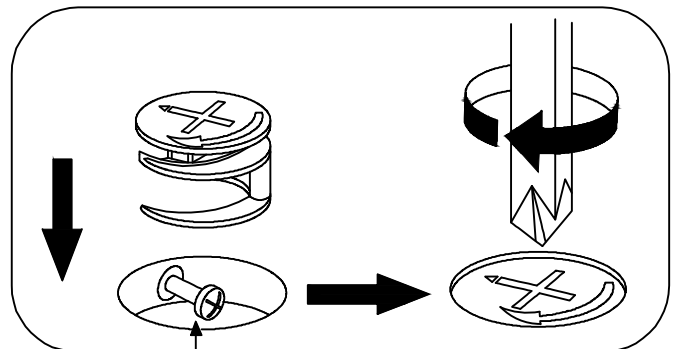
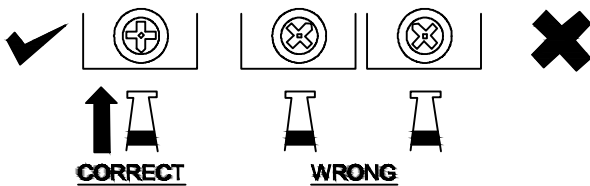
HAVARD CADDY

SPECIAL TIPS FOR FITTING CAM-LOCKS AND QUICKFIT

CAM-LOCK



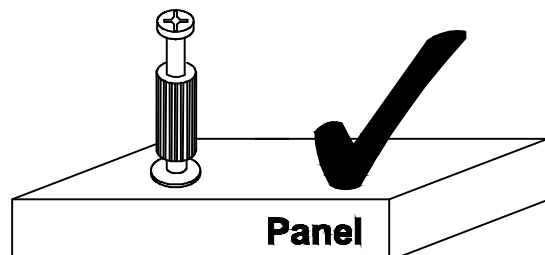
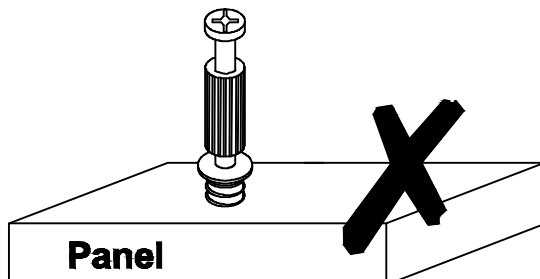
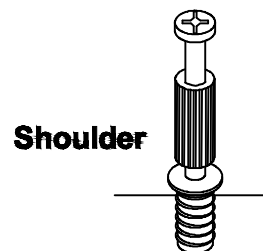
**WHEN FITTING CAMLOCK
ENSURE STARTING POSITION IS CORRECT
BEFORE YOU INSERT CONNECTING QUICKFIT
TURN CLOCKWISE UNTIL SECURE**



Quickfit head needs to be in centre

QUICKFIT

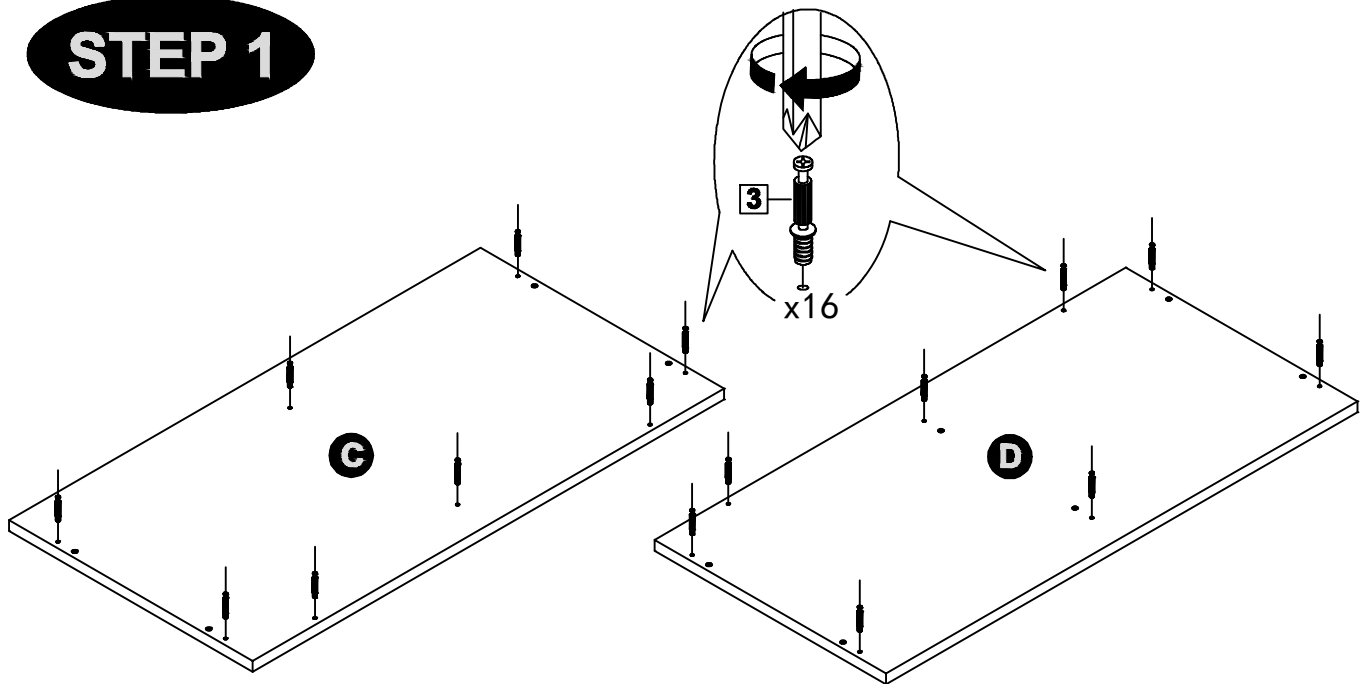
**Tighten until shoulder is flush with panel.
Do not overtighten or undertighten
(see example below)**



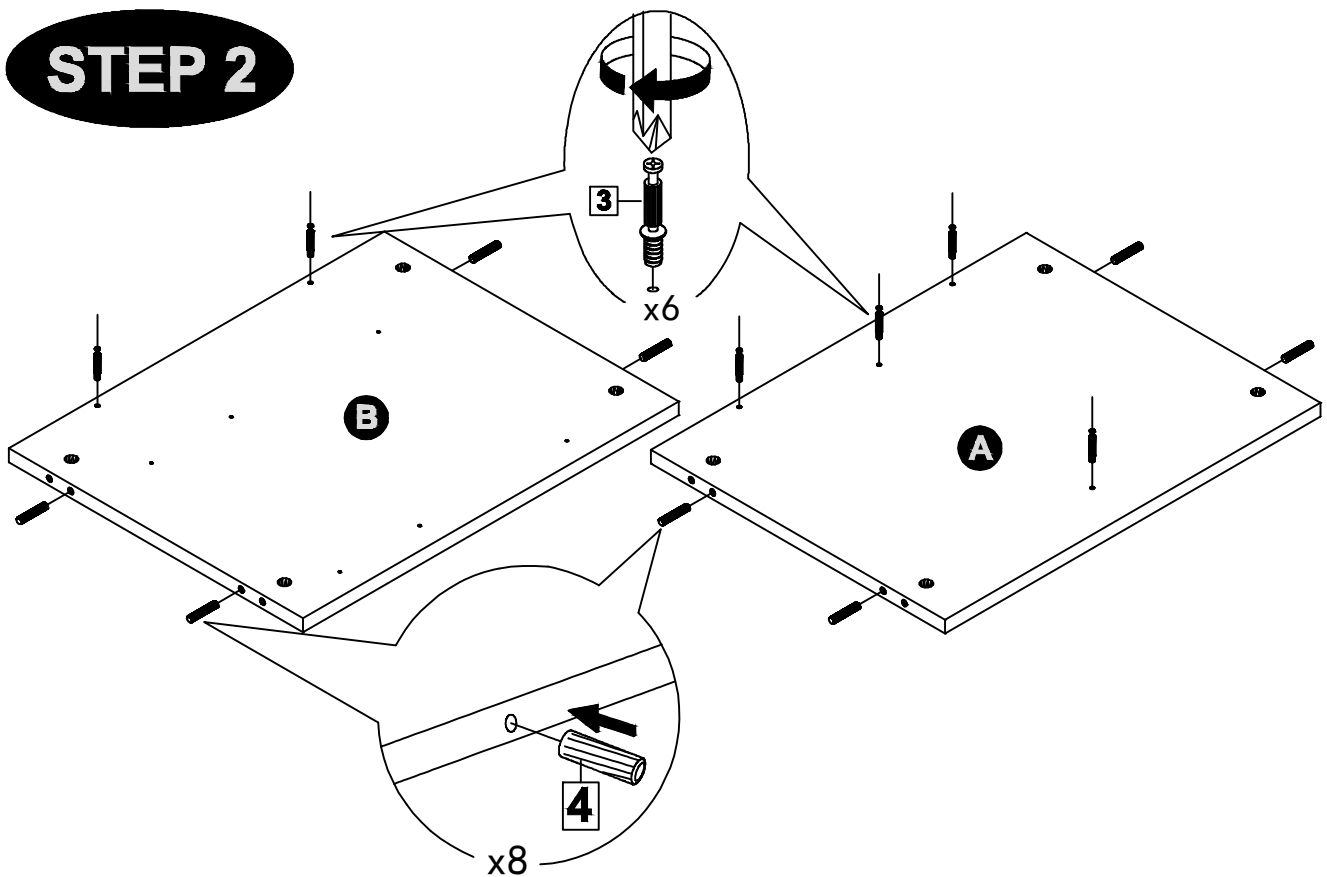
MODEL NAME:

HAVARD CADDY

STEP 1



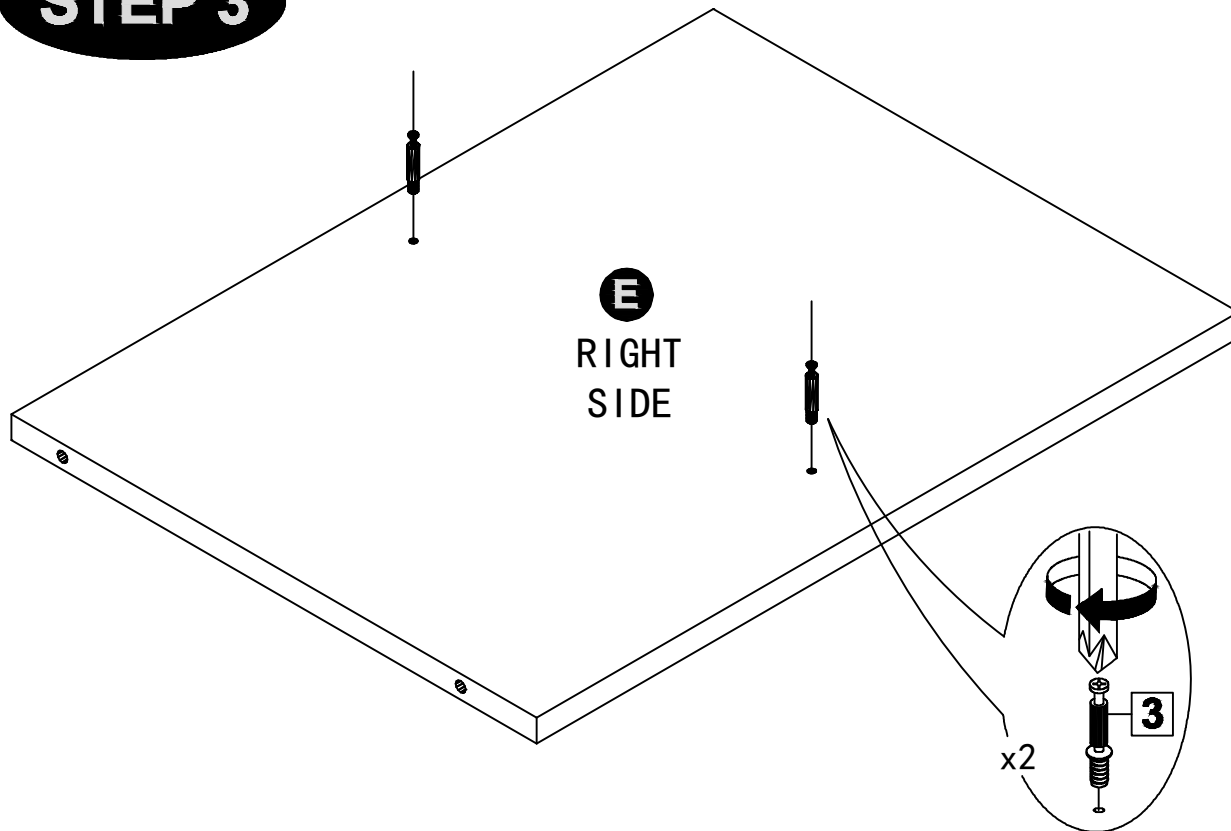
STEP 2



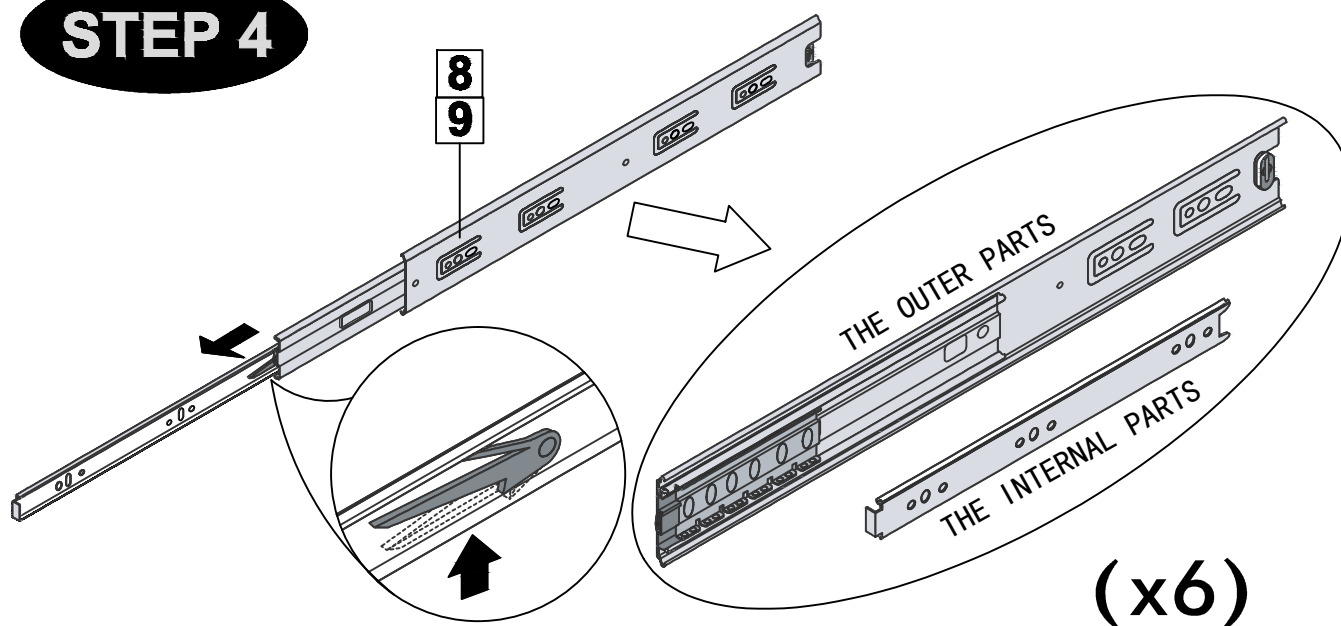
MODEL NAME:

HAVARD CADDY

STEP 3



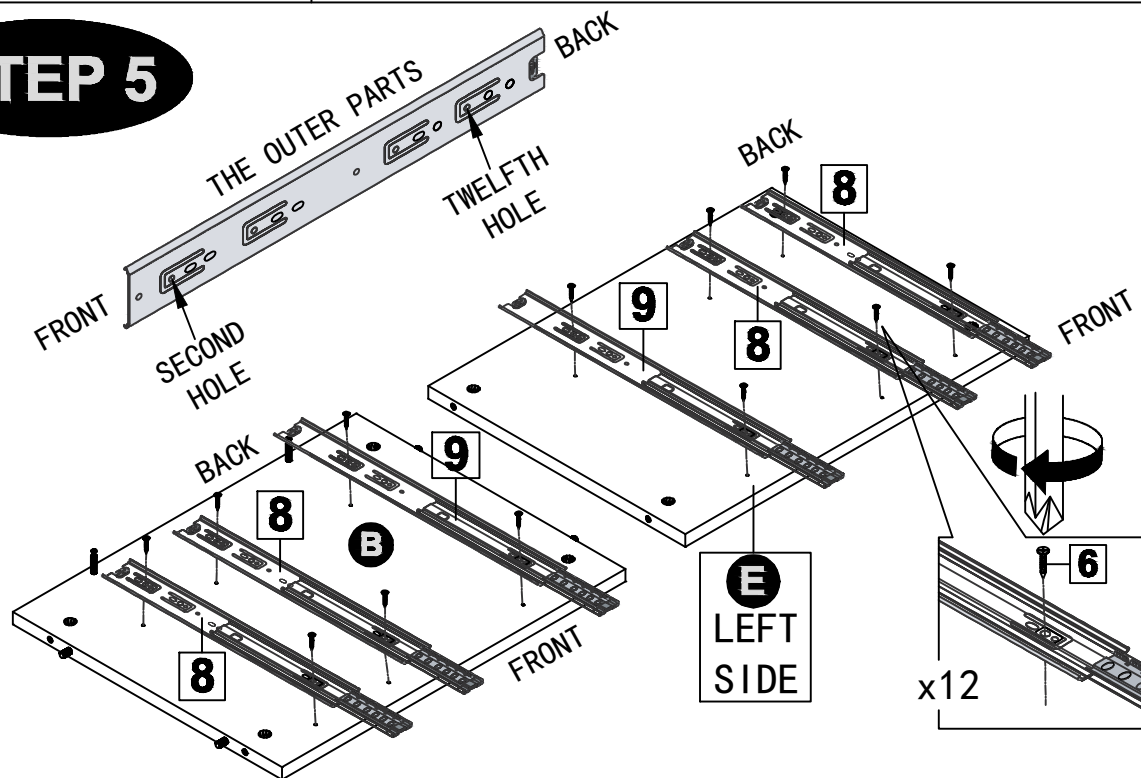
STEP 4



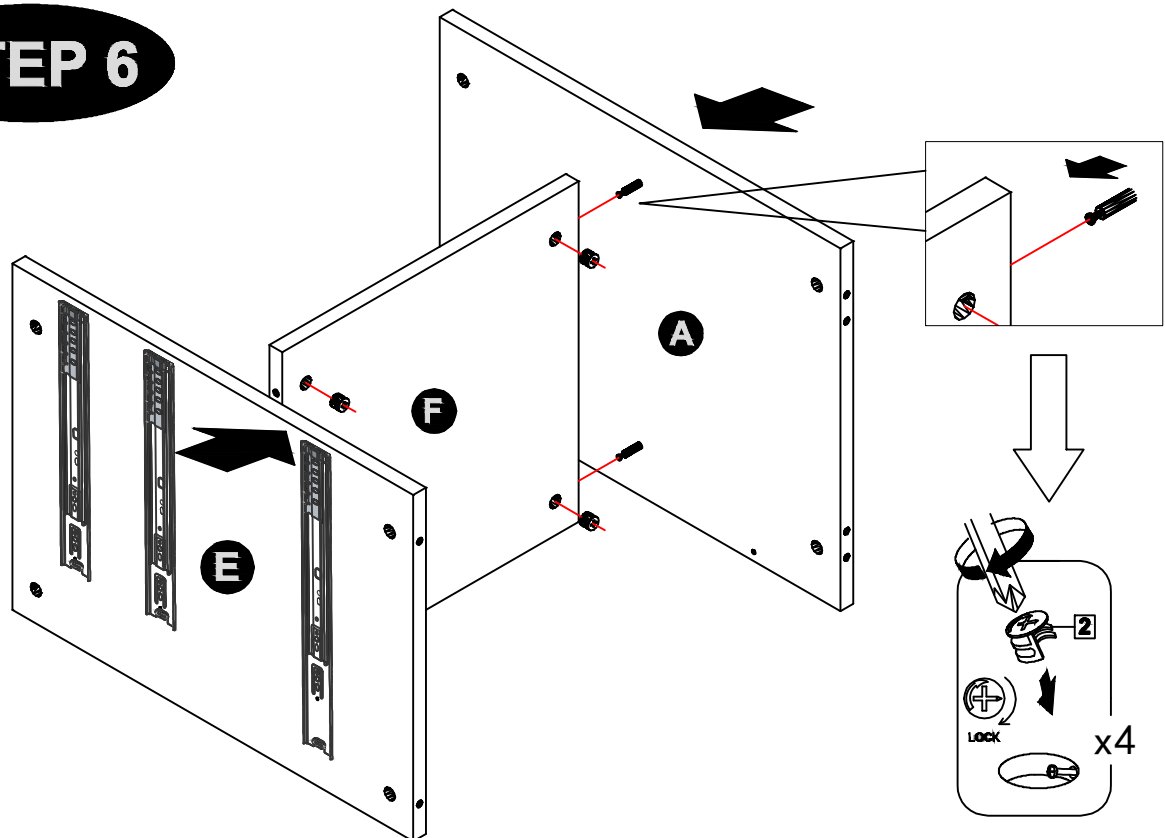
MODEL NAME:

HAVARD CADDY

STEP 5



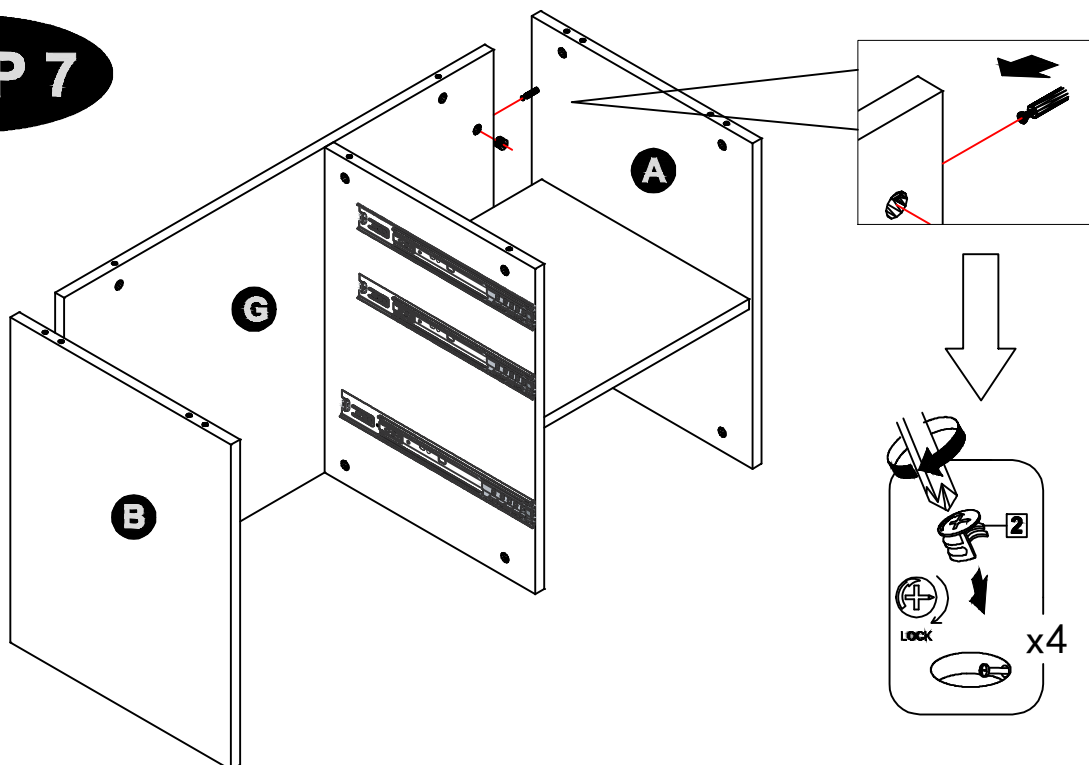
STEP 6



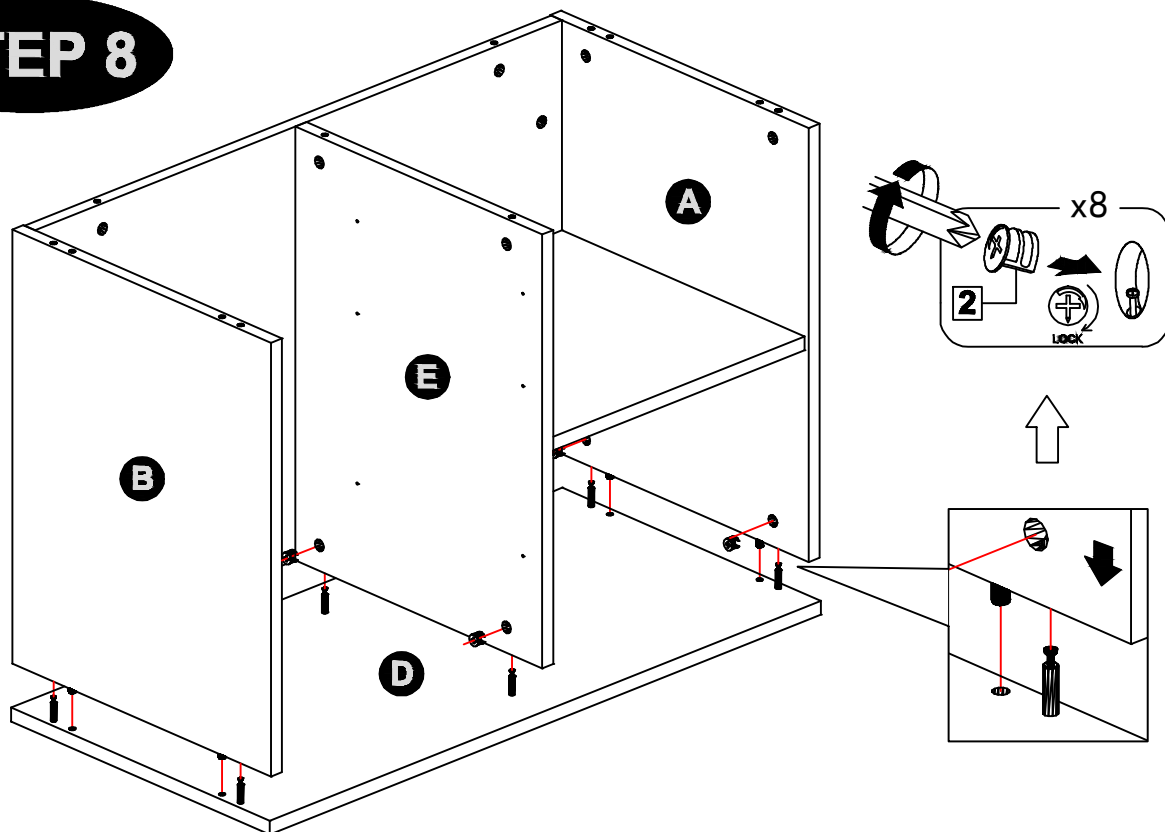
MODEL NAME:

HAVARD CADDY

STEP 7



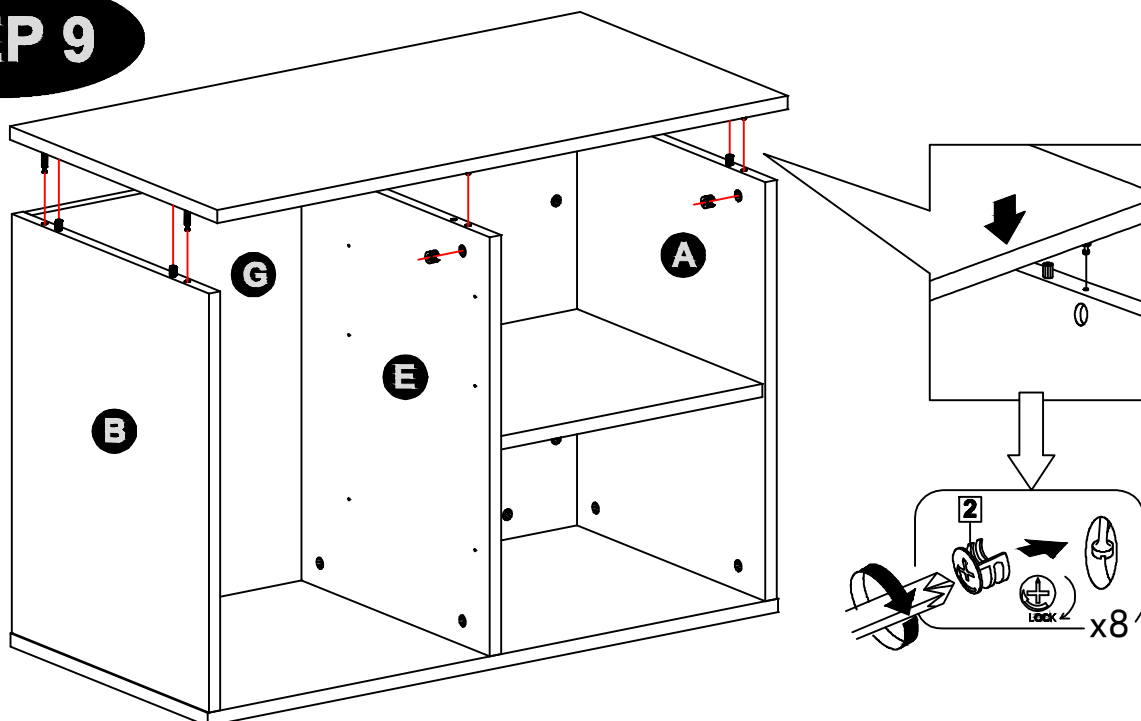
STEP 8



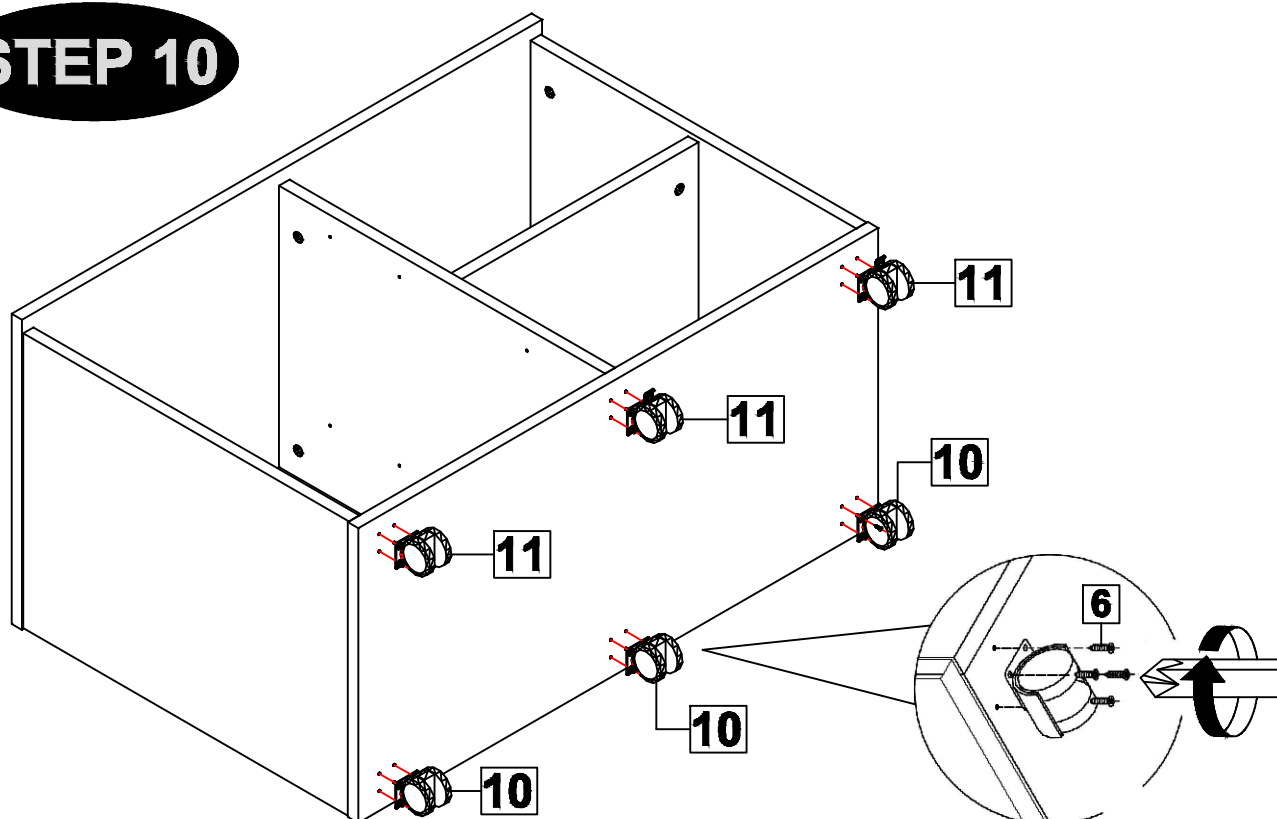
MODEL NAME:

HAVARD CADDY

STEP 9



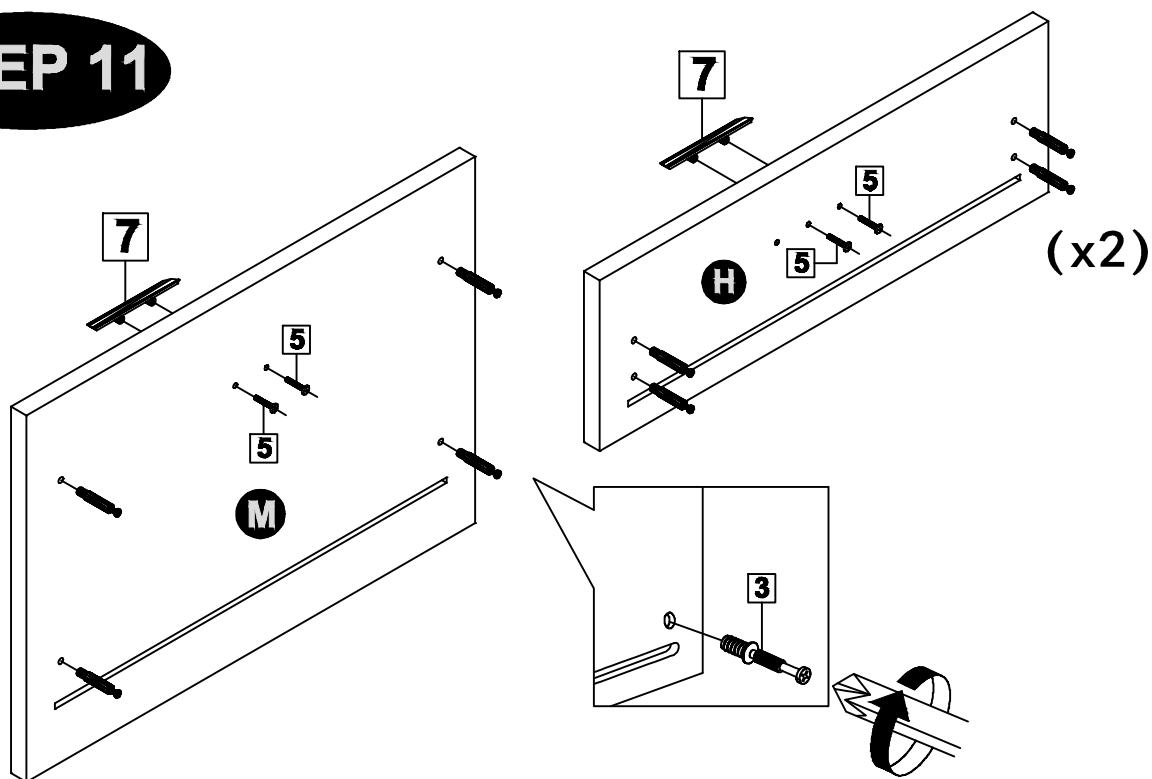
STEP 10



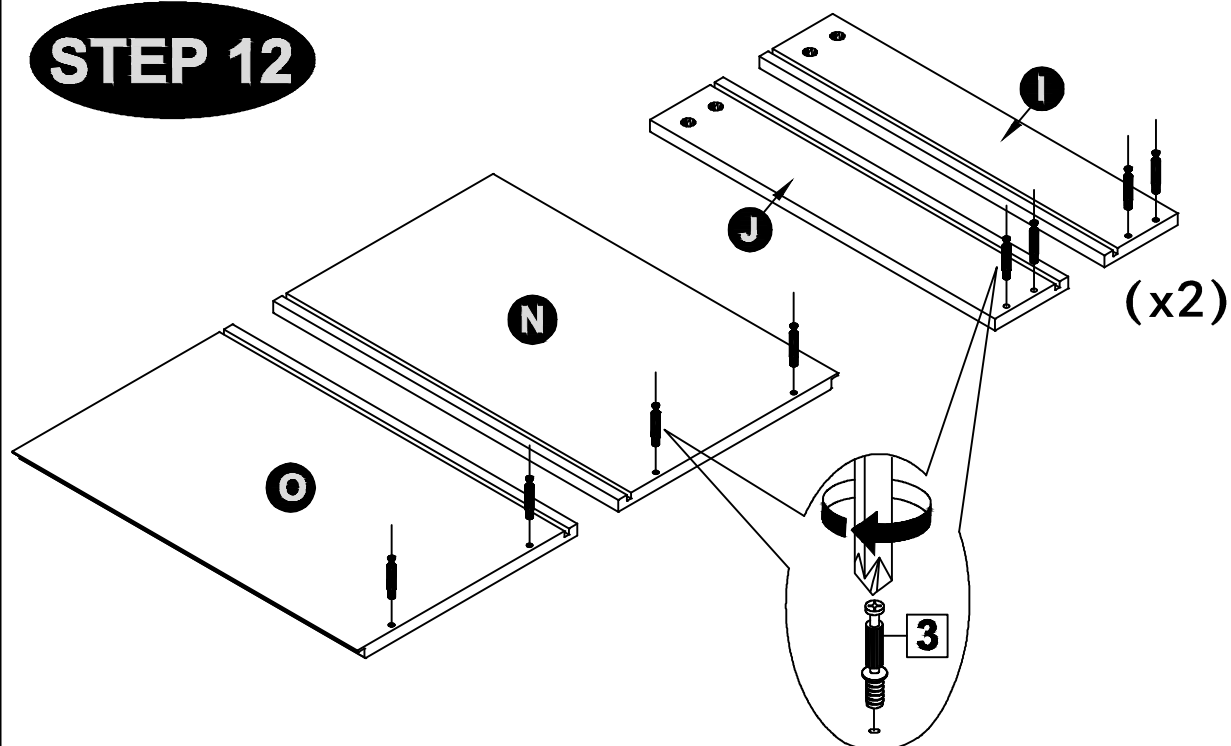
MODEL NAME:

HAVARD CADDY

STEP 11



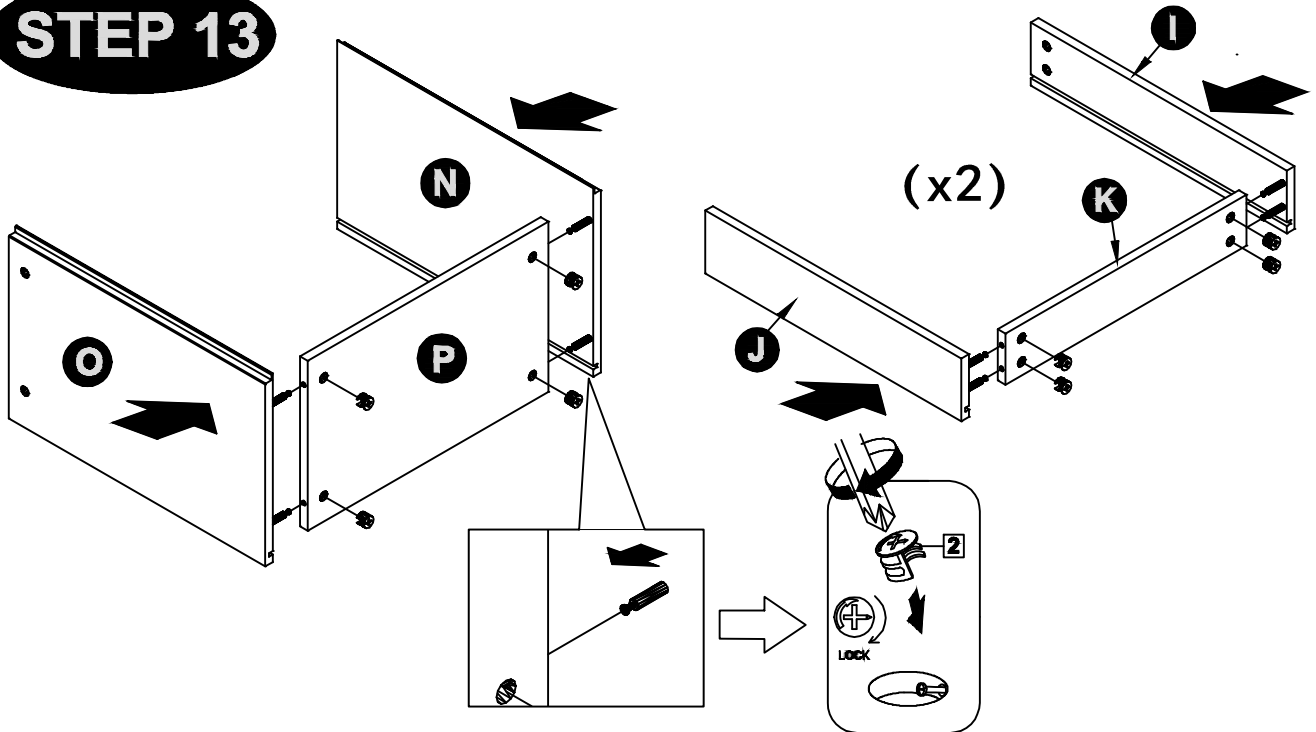
STEP 12



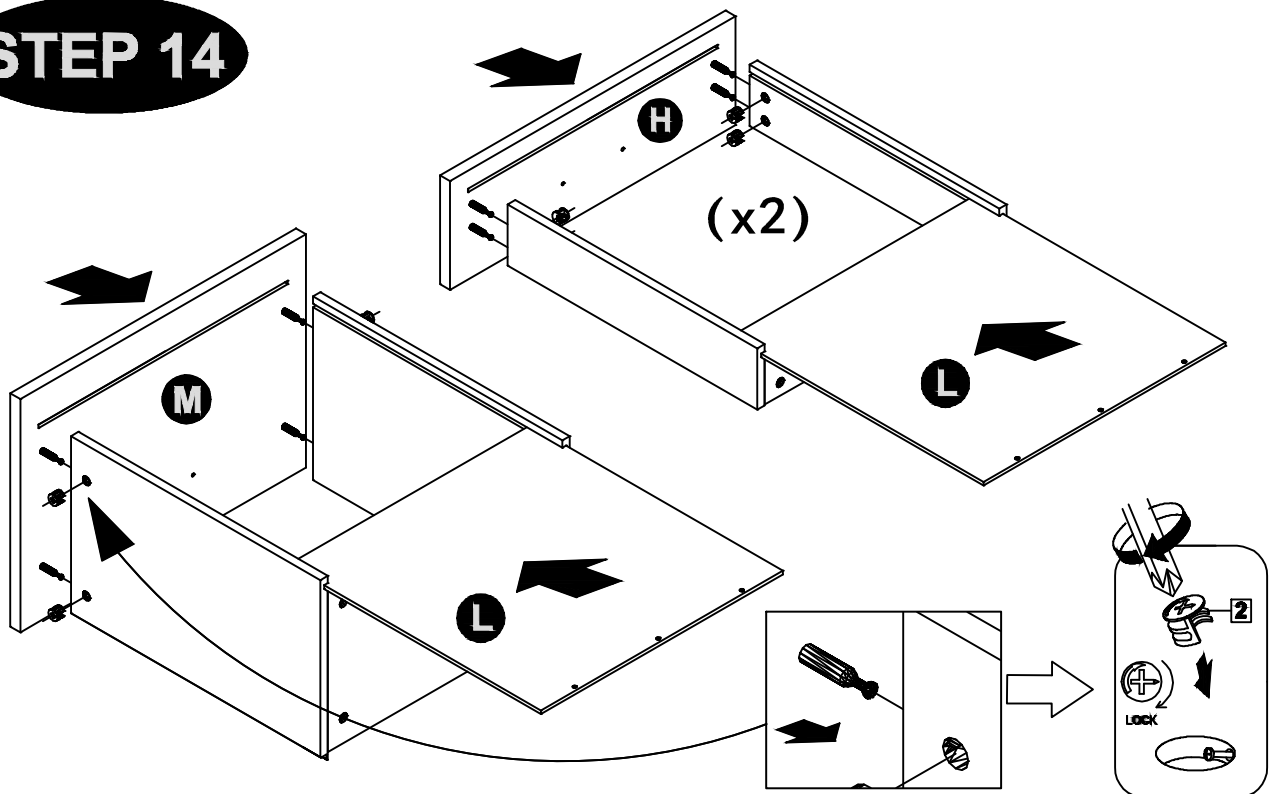
MODEL NAME:

HAVARD CADDY

STEP 13



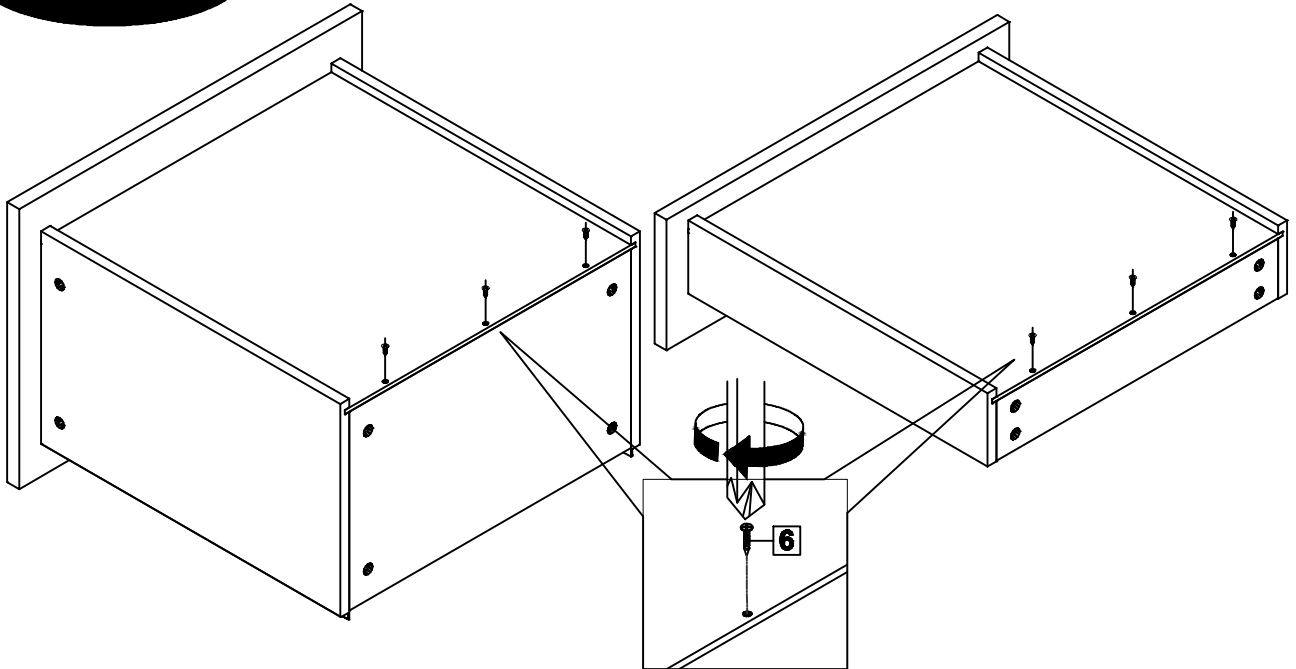
STEP 14



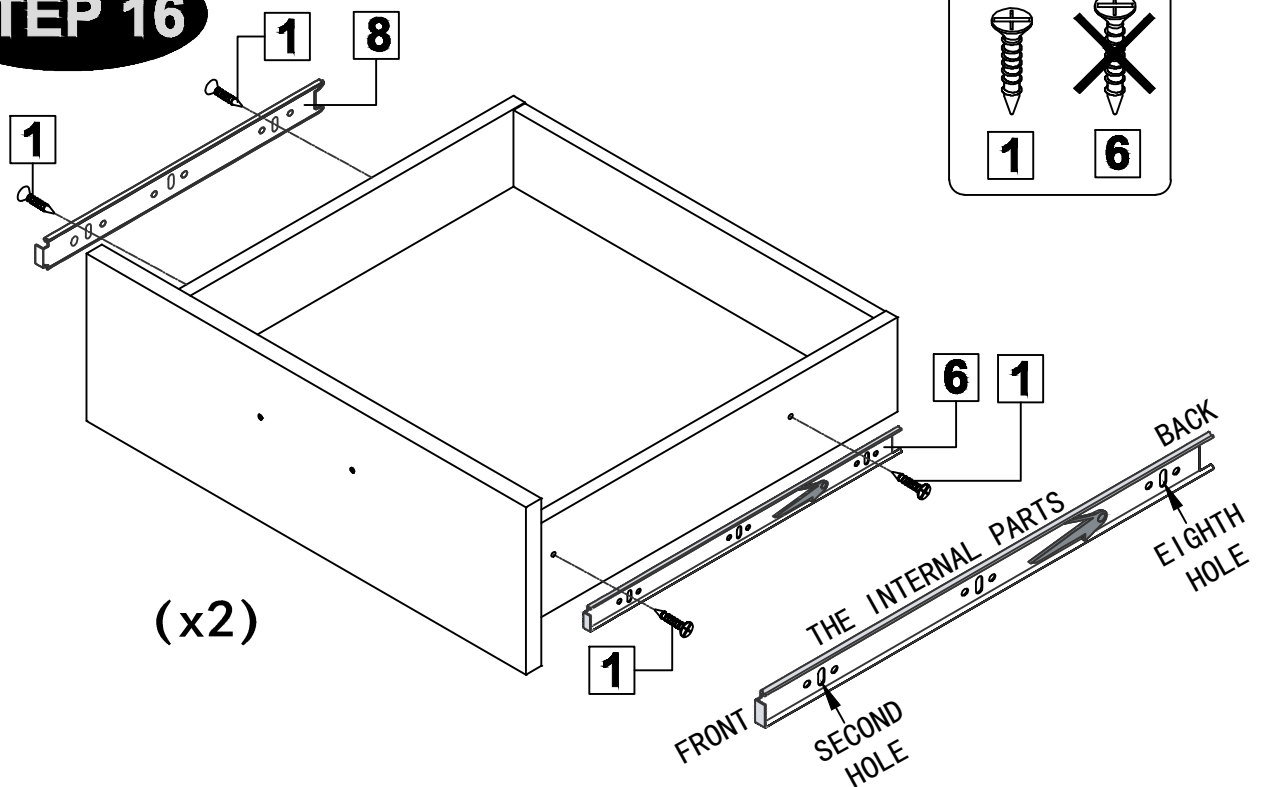
MODEL NAME:

HAVARD CADDY

STEP 15



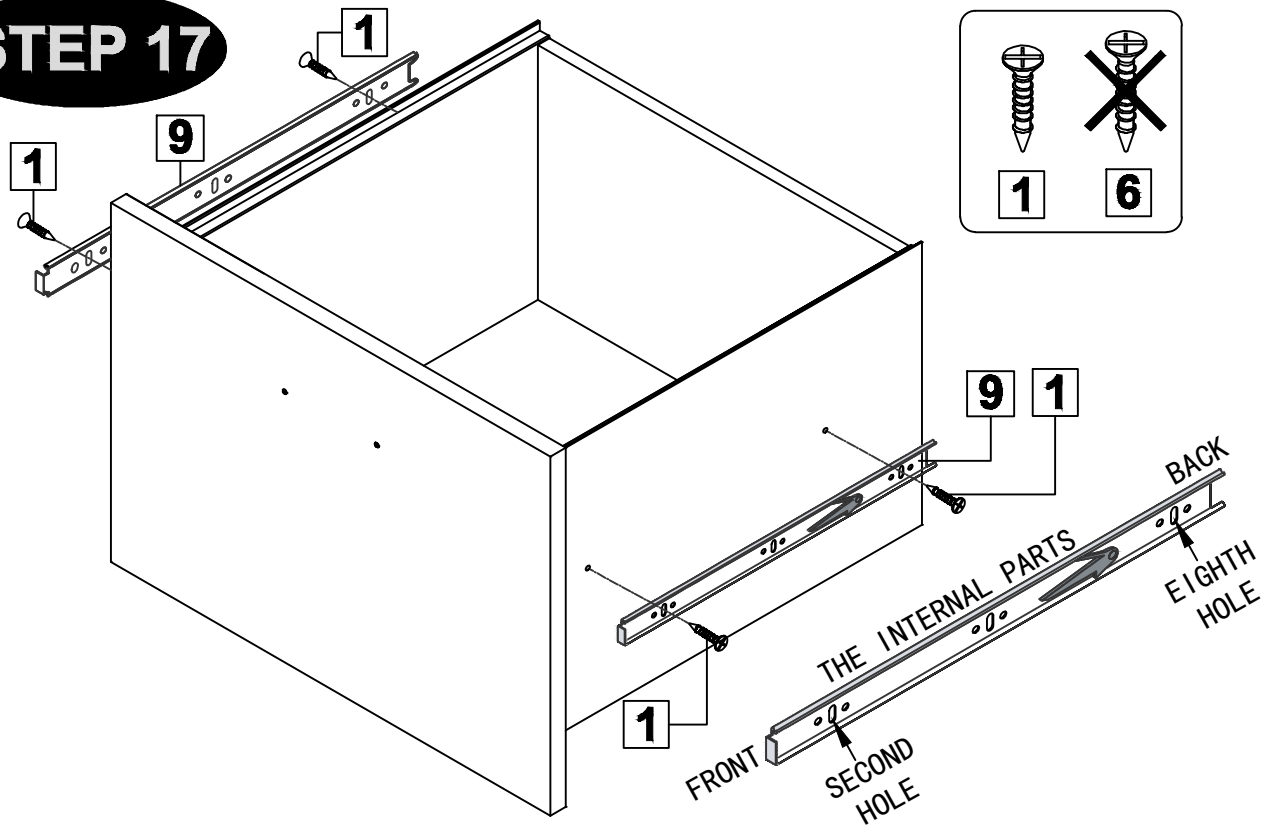
STEP 16



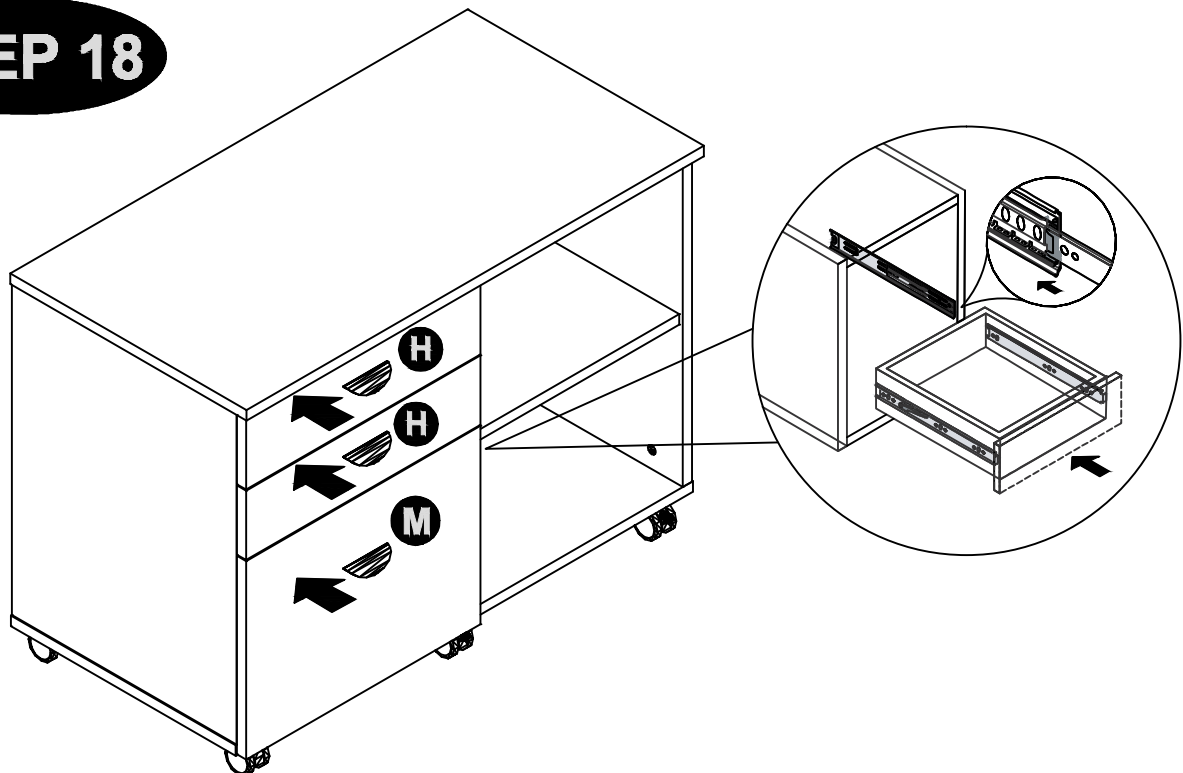
MODEL NAME:

HAVARD CADDY

STEP 17



STEP 18



MODEL NAME:

HAVARD CADDY

STEP 19

