

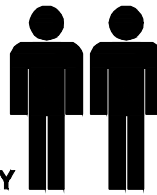
MODEL NAME:

HAMILTON DESK

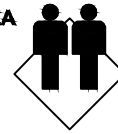
1.5hr

APPROXIMATE ASSEMBLY TIME

2 PERSONS OF ASSEMBLY

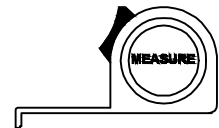
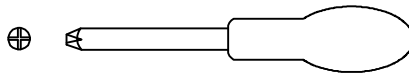
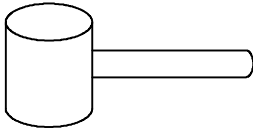


**FLOOR AREA
2 M X 2 M**

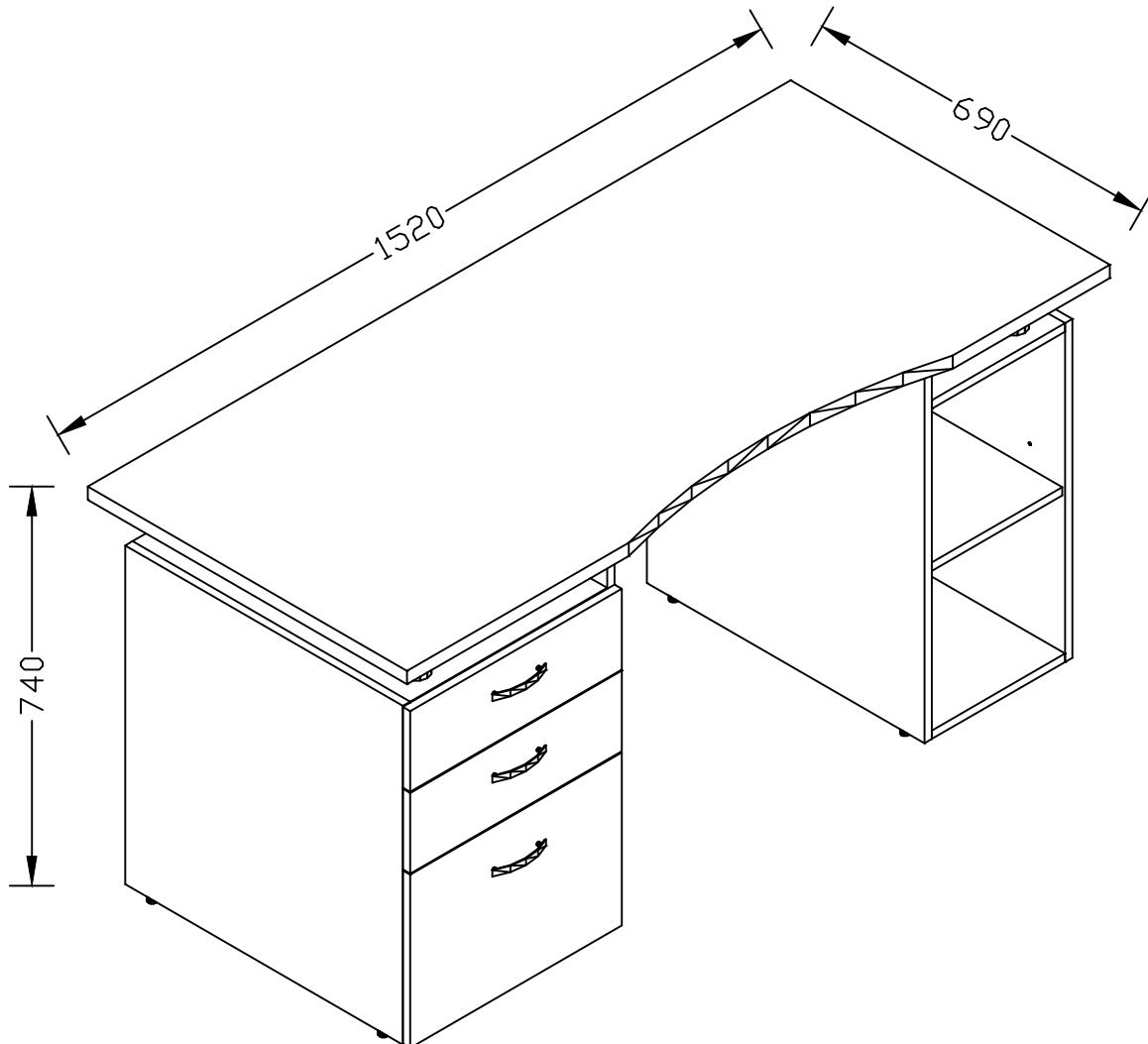


REQUIRED ASSEMBLY SPACE

REQUIRED ASSEMBLY TOOLS



ASSEMBLED DIMENSIONS



MAXIMUM WEIGH ACROSS THE DESK 50KG

MAXIMUM WEIGH PER DRAWER 15KG

	MODEL NAME:
	HAMILTON DESK

Top Tips before you start :

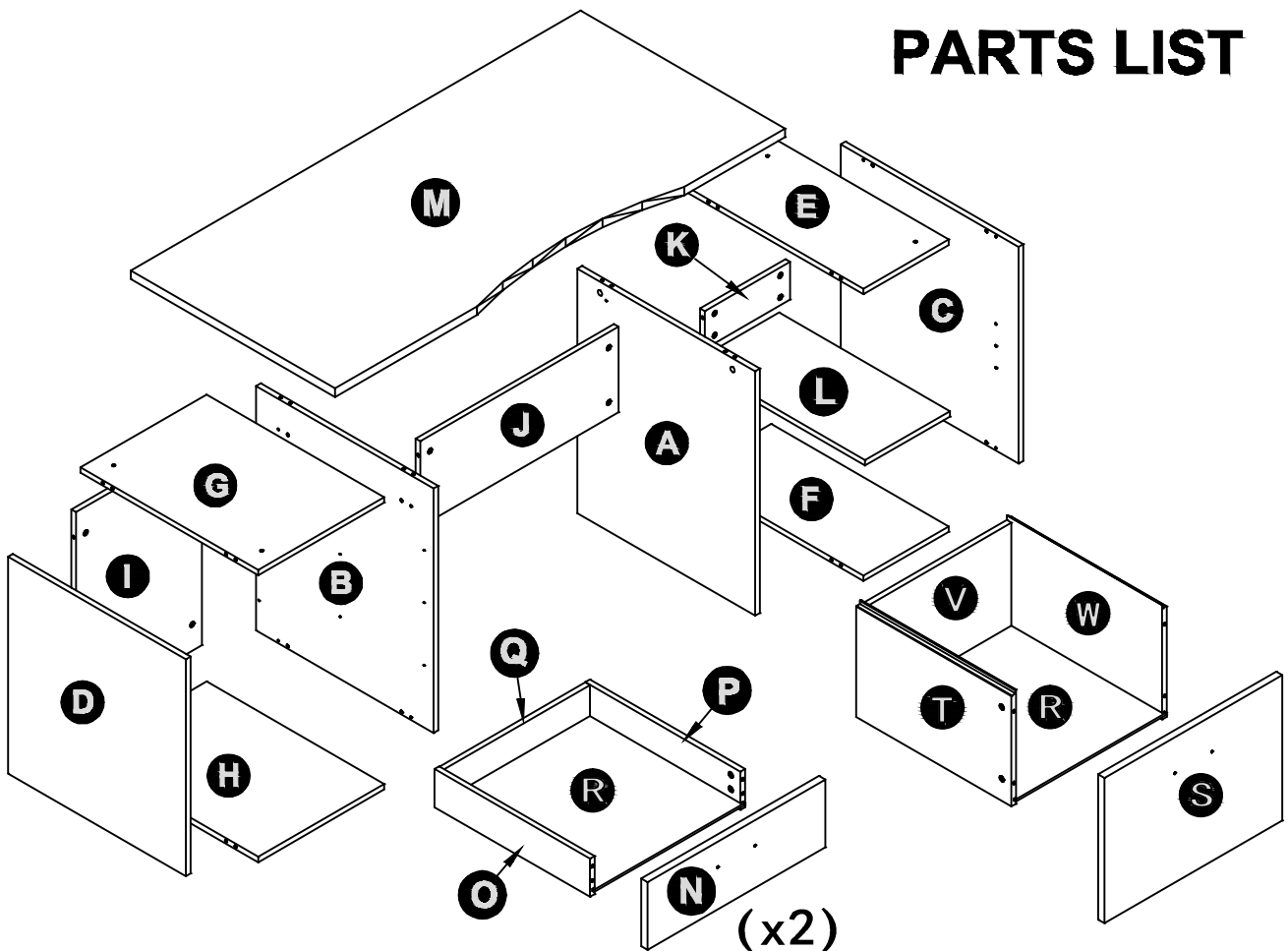
1. Please check that all parts are present before you start the assembly of your furniture.
2. For ease and speed of assembly, we recommend that before you commence each step of the assembly, that you identify all the parts required for that step.
3. For larger items, please ensure that you have sufficient space and people (as indicated on page 1) to assemble your product safely.
4. We recommend that, where possible, all items are assembled near to the area in which they will be placed in use, to avoid moving the product unnecessarily once assembled.
5. For the protection of your furniture, we recommend that the product is placed on a protected surface during assembly to prevent any damage.
6. During assembly please take care not to over-tighten any fittings, as this may damage the product.
7. Always place the product on a flat, steady and stable surface.
8. Do not sit or stand on the product. Do not use the product as a stepladder.
9. This product is intended for indoor, household use only as it is non industrial product.

Care and Maintenance of your Furniture

- Please periodically check all fittings and re-tighten as necessary.
- To clean your item, please use a damp cloth and wipe clean.
- Never allow any kind of liquid to remain on your furniture. Absorption can cause wood to warp or finishes to de-laminate.
- Please do not place hot items (e.g. Hot drinks) directly on to the surface.
- Please do not drag and pull your furniture.

MODEL NAME:**HAMILTON DESK**

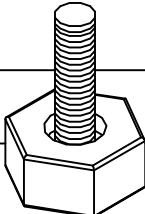


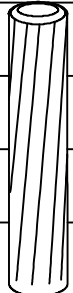
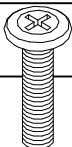

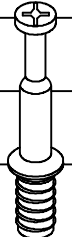
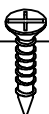
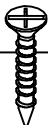
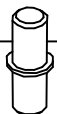
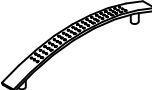

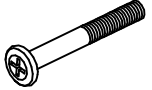
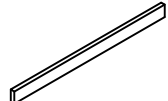
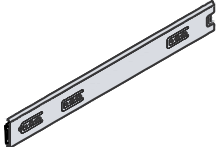
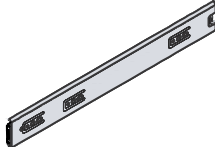
NO.	PART LIST	QTY	NO.	PART LIST	QTY
(A)	MIDDLE RIGHT SIDE PANEL	1	(L)	LAYER PANEL	1
(B)	MIDDLE LEFT SIDE PANEL	1	(M)	DESK TOP PANEL	1
(C)	RIGHT SIDE PANEL	1	(N)	DRAWER FRONT	2
(D)	LEFT SIDE PANEL	1	(O)	DRAWER LEFT SIDE PANEL	2
(E)	RIGHT SIDE TOP PANEL	1	(P)	DRAWER RIGHT SIDE PANEL	2
(F)	RIGHT SIDE BOTTOM PANEL	1	(Q)	DRAWER BACK PANEL	2
(G)	LEFT SIDE TOP PANEL	1	(R)	DRAWER BASE	3
(H)	LEFT SIDE BOTTOM PANEL	1	(S)	DRAWER FRONT	1
(I)	BACK PANEL	1	(T)	DRAWER LEFT SIDE PANEL	1
(J)	SUPPORT PANEL	1	(U)	DRAWER RIGHT SIDE PANEL	1
(K)	BACK SUPPORT PANEL	1	(V)	DRAWER BACK PANEL	1

PARTS LIST

MODEL NAME:

HAMILTON DESK

HARDWARE LIST

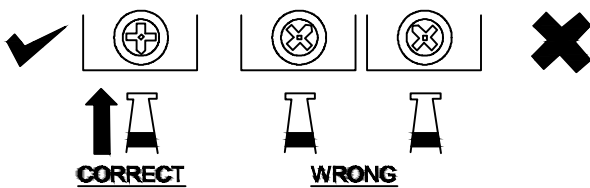
					4cm 3cm 2cm 1cm 0cm
8X	32X ø15	32X M6	20X ø8x40	6X M4x18	
1	2	3	4	5	
LEG COVER	CAMLOCK	QUICKFIT	WOOD DOWEL	PAN HEAD SCREW	
					3cm 2cm 1cm 0cm
24X ø12	24X M6	12X M4x14	21X M4x16	4X ø5	2X
6	7	8	9	10	11
DRAWER CAMLOCK	DRAWER QUICKFIT	FLAT HEAD SCREW	FLAT HEAD SCREW	METAL DOWEL	FILE CLIP
					
3X	4X	4X M6x110	1X	4X	2X
12	13	14	15	16	17
HANDLE	METAL LEG	PAN HEAD SCREW	ALULINUM BAR	DRAWER RUNNER -350mm	DRAWER RUNNER -400 mm

MODEL NAME:

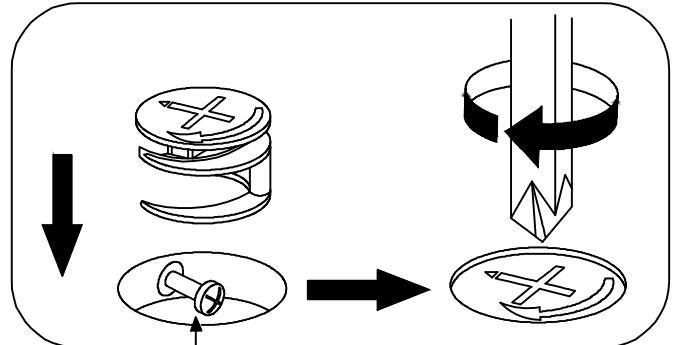
HAMILTON DESK

SPECIAL TIPS FOR FITTING CAM-LOCKS AND QUICKFIT

**WHEN FITTING CAMLOCK
ENSURE STARTING POSITION IS CORRECT
BEFORE YOU INSERT CONNECTING QUICKFIT
TURN CLOCKWISE UNTIL SECURE**

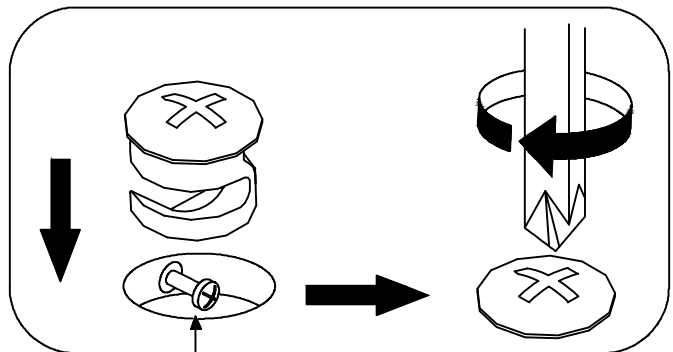


CAM-LOCK



Quickfit head needs to be in centre

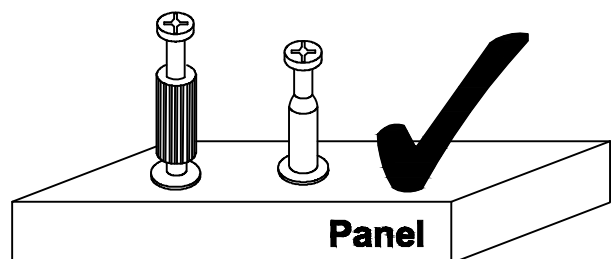
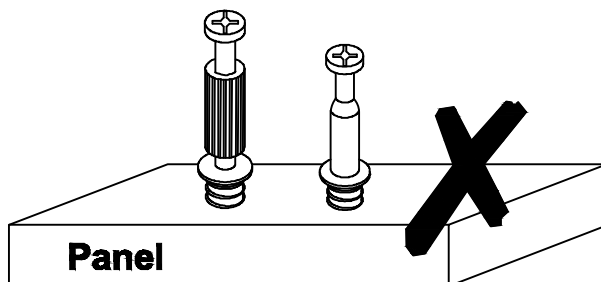
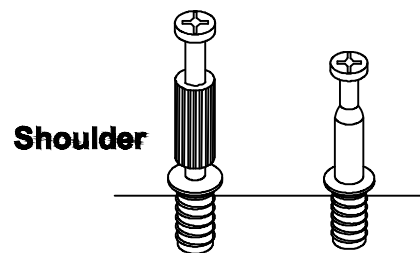
**DRAWER
CAM-LOCK**



Quickfit head needs to be in centre

QUICKFIT / DRAWER QUICKFIT

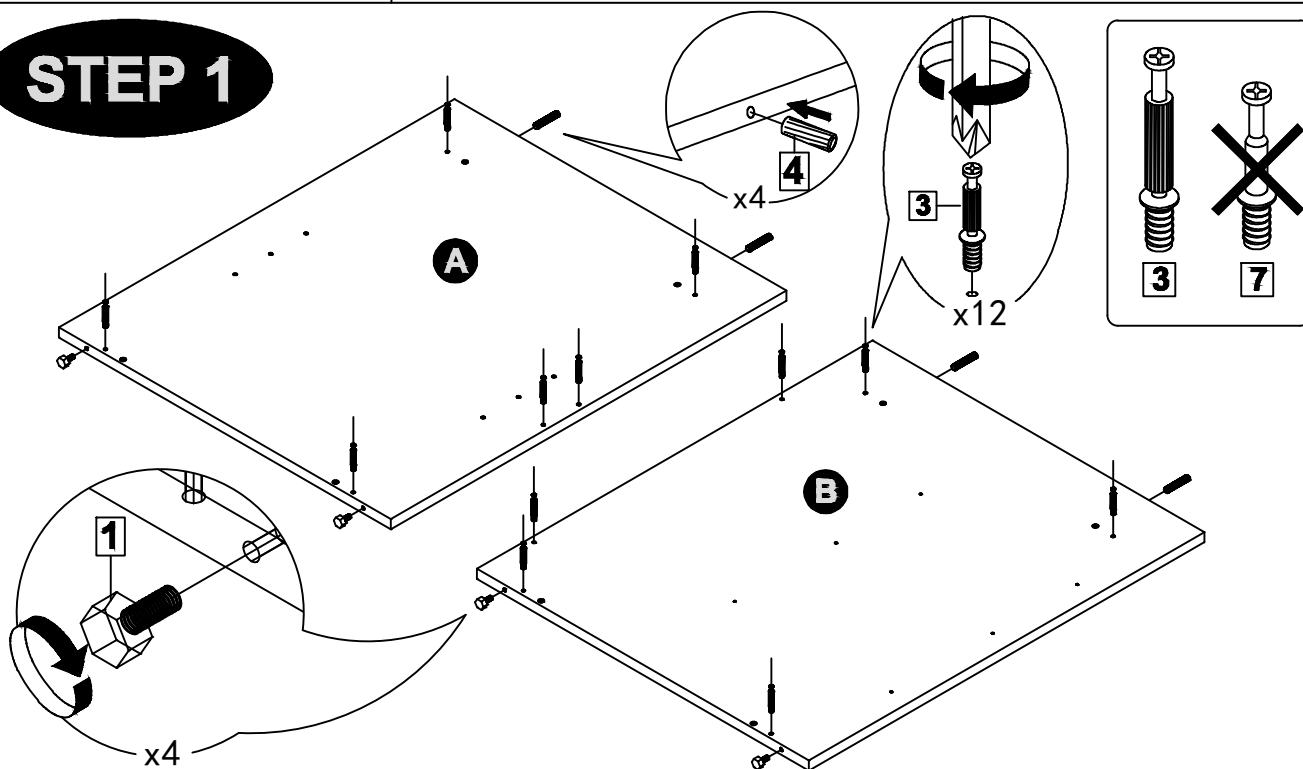
**Tighten until shoulder is flush with panel.
Do not overtighten or undertighten
(see example below)**



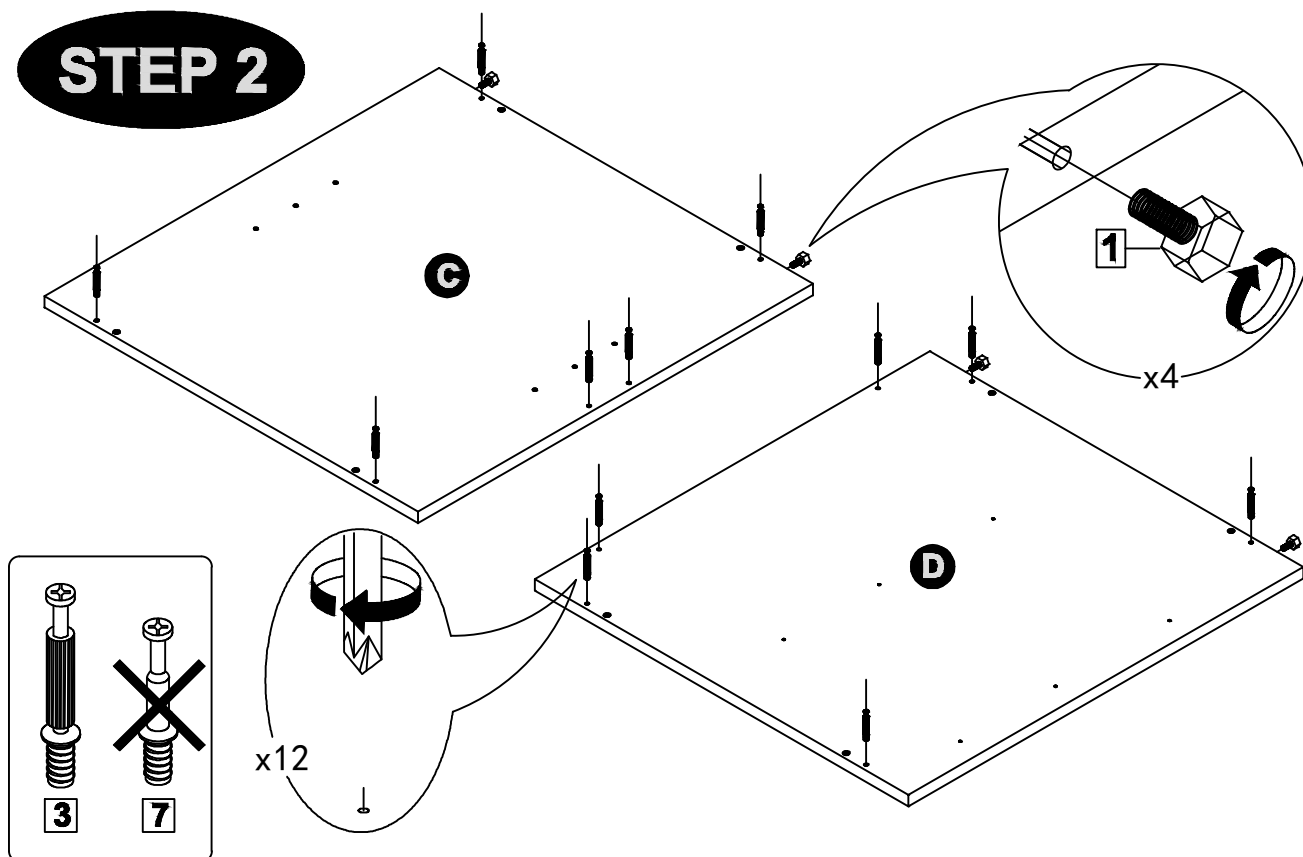
MODEL NAME:

HAMILTON DESK

STEP 1



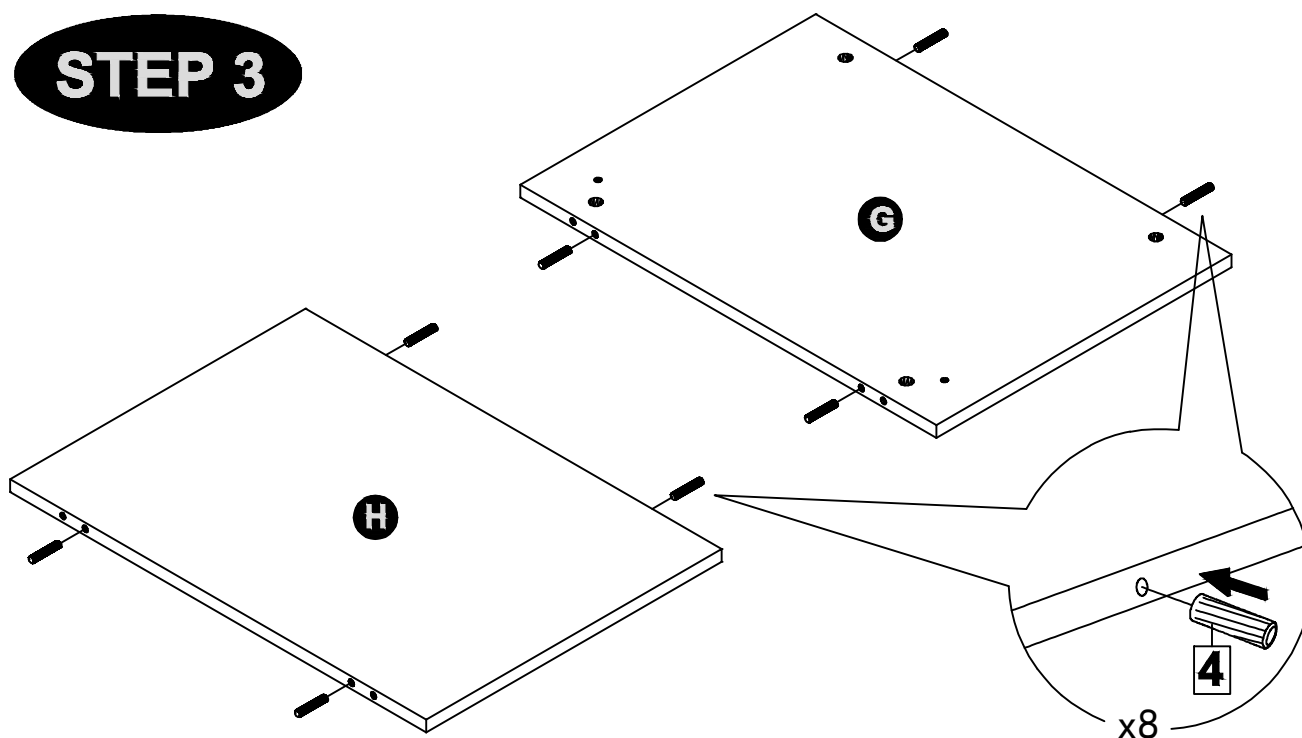
STEP 2



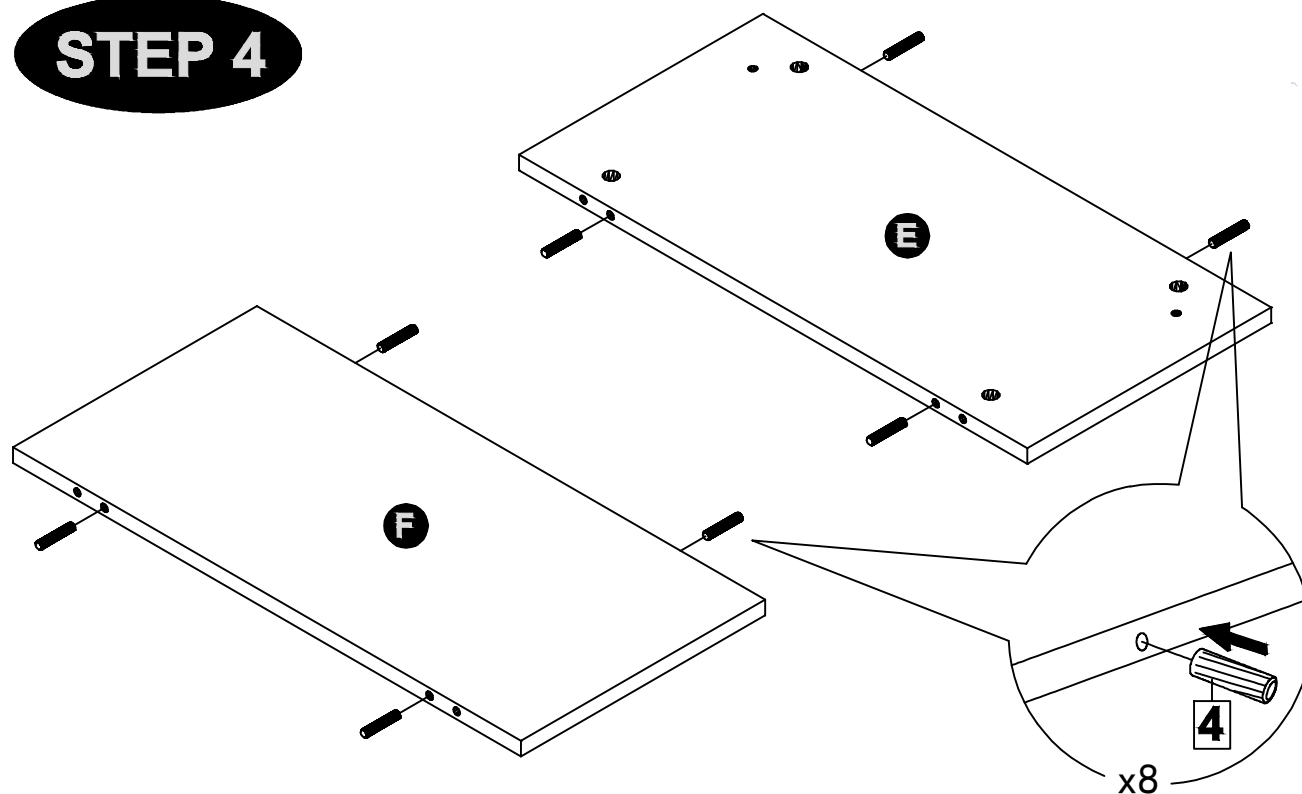
MODEL NAME:

HAMILTON DESK

STEP 3



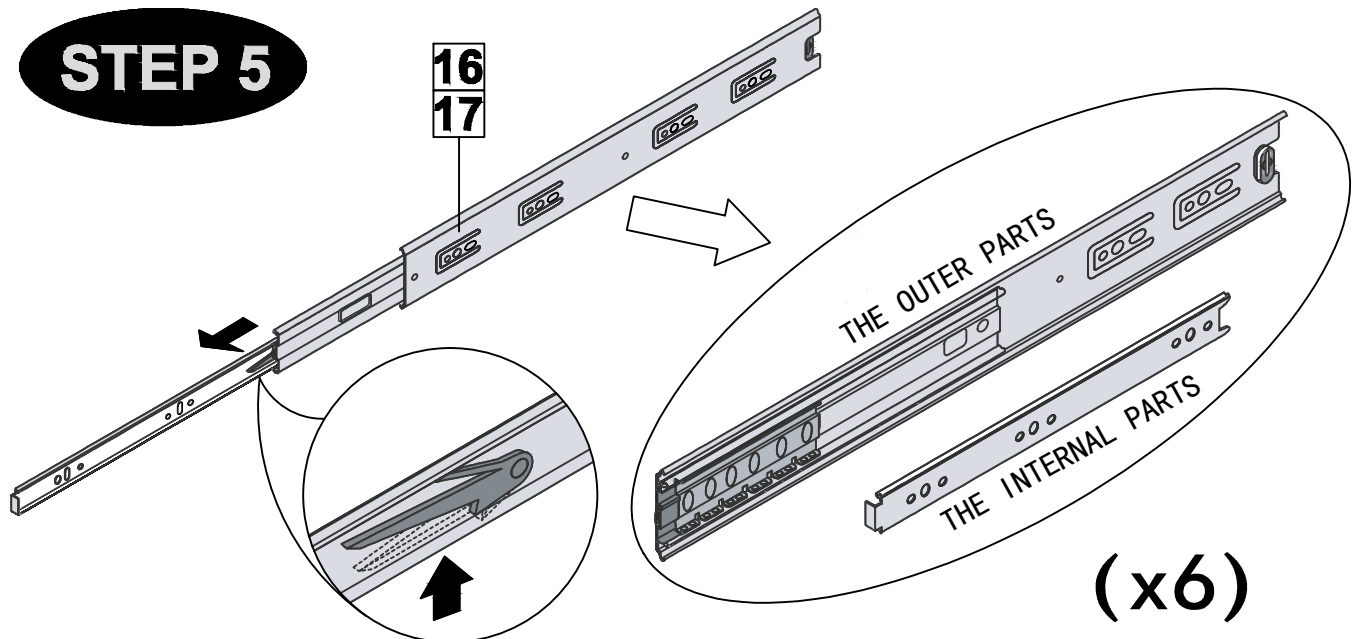
STEP 4



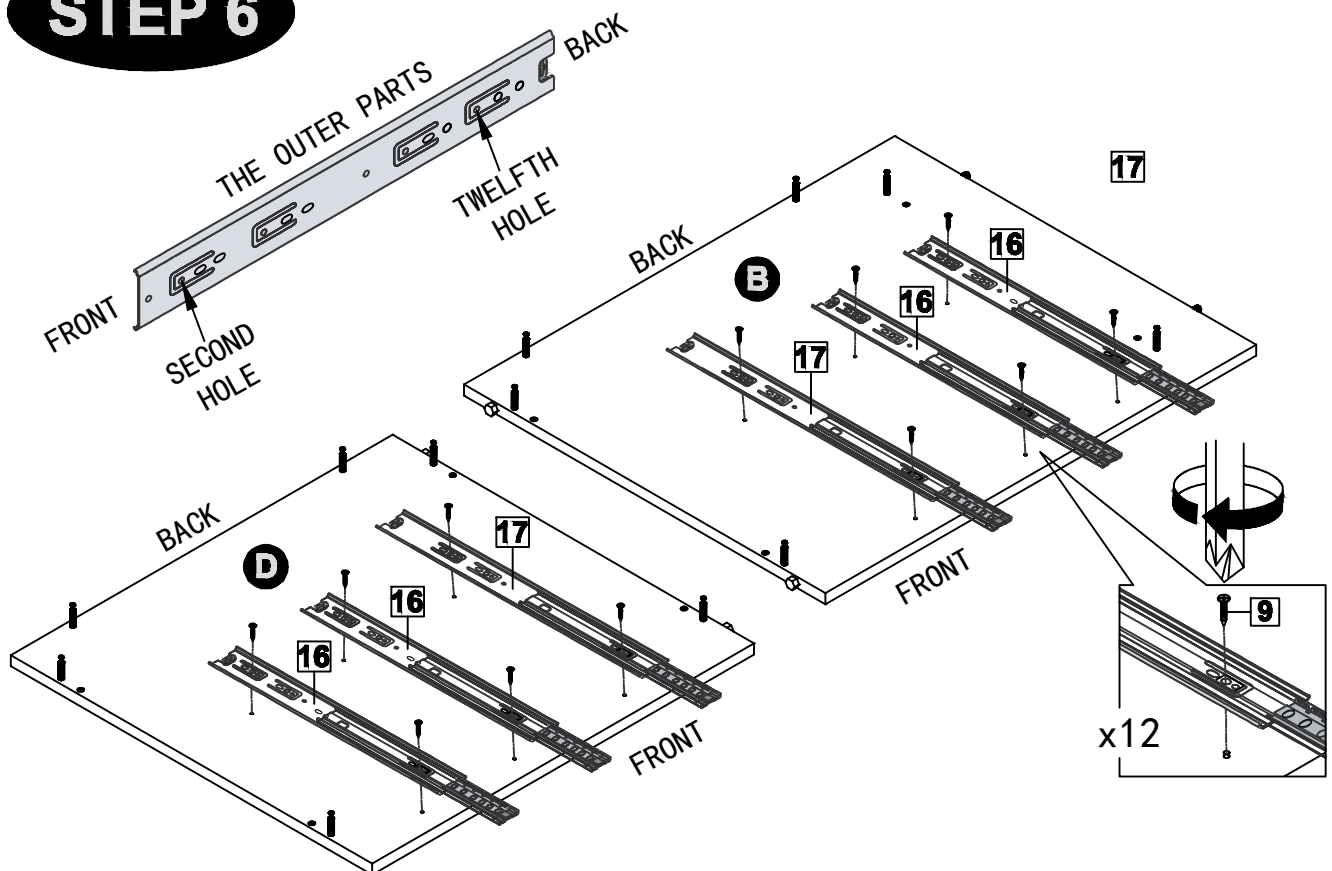
MODEL NAME:

HAMILTON DESK

STEP 5



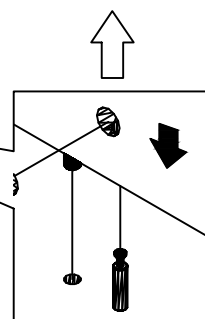
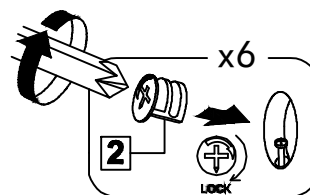
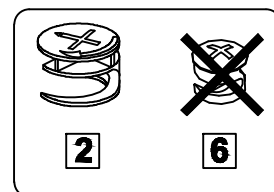
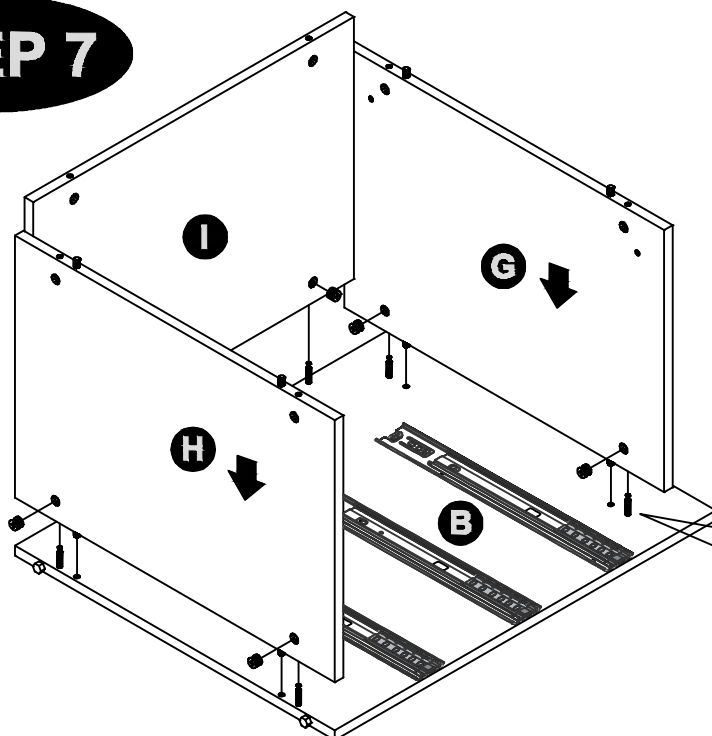
STEP 6



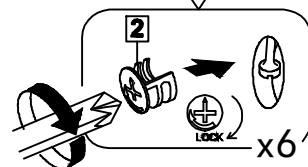
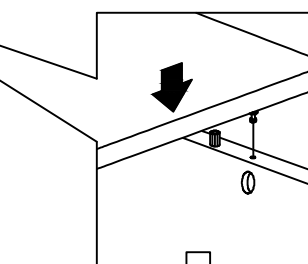
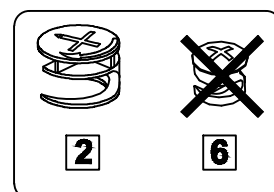
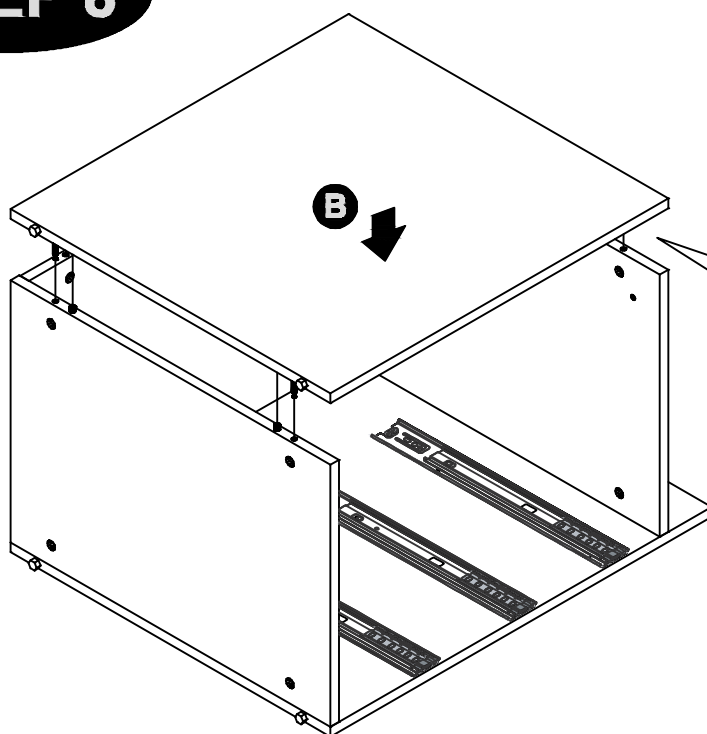
MODEL NAME:

HAMILTON DESK

STEP 7



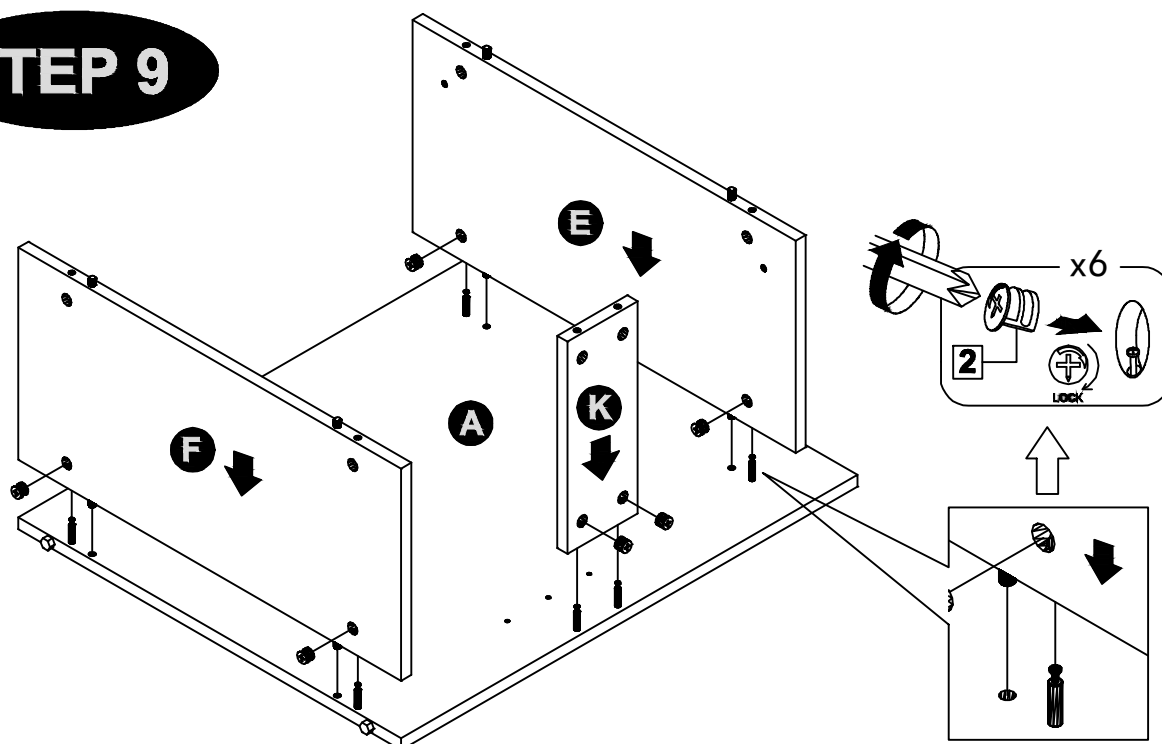
STEP 8



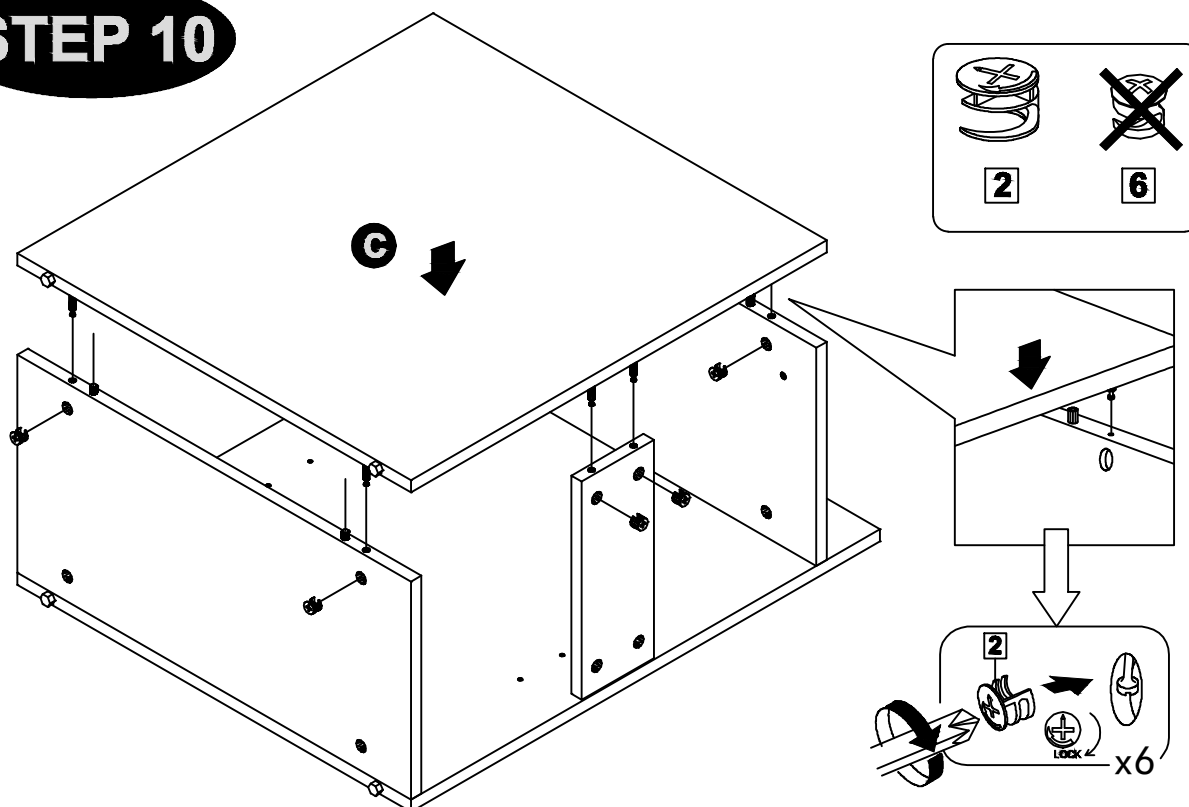
MODEL NAME:

HAMILTON DESK

STEP 9



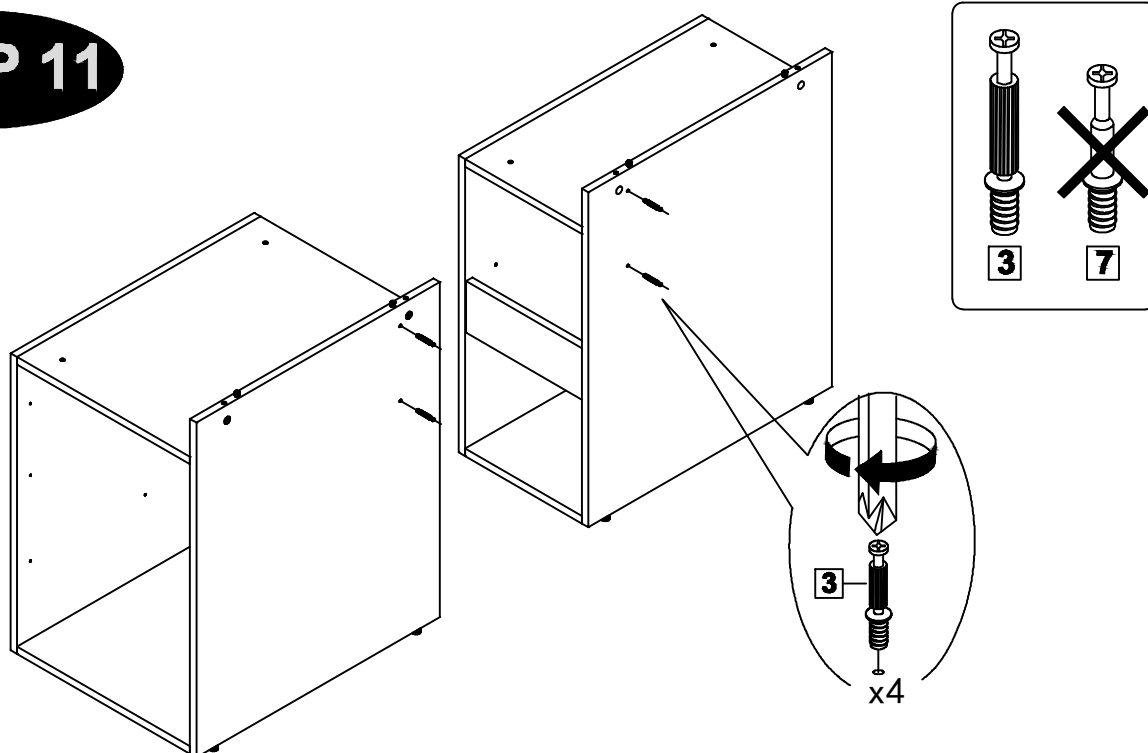
STEP 10



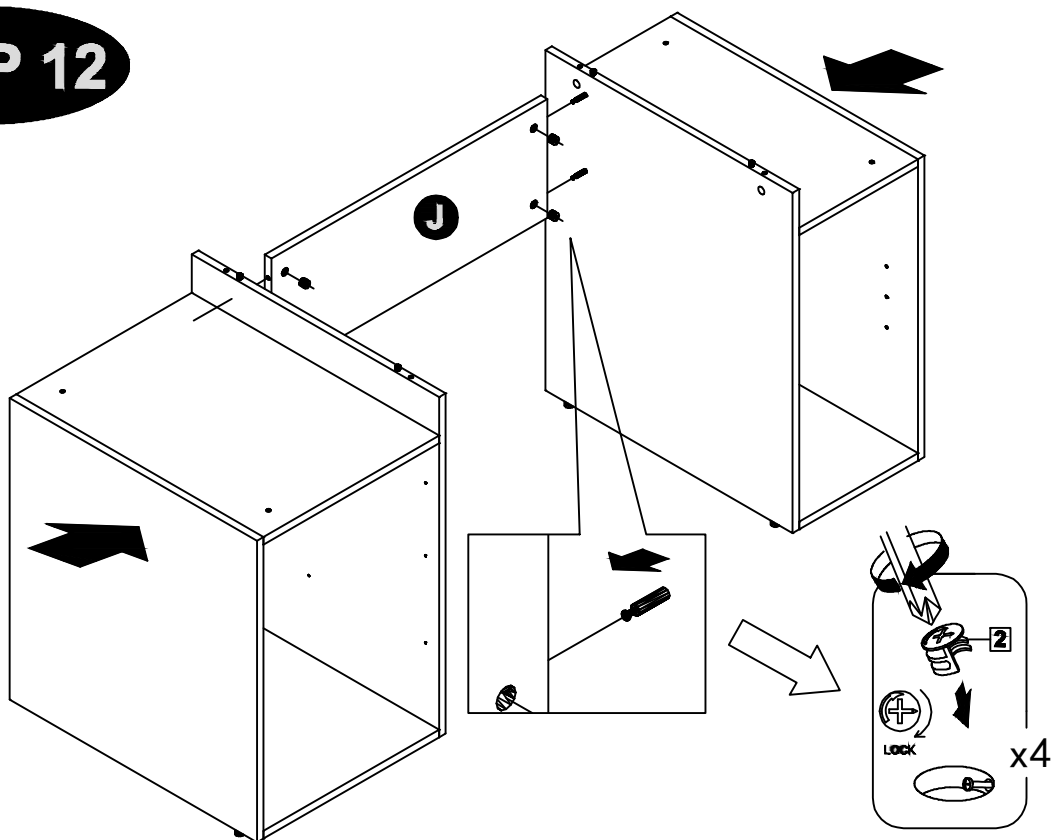
MODEL NAME:

HAMILTON DESK

STEP 11



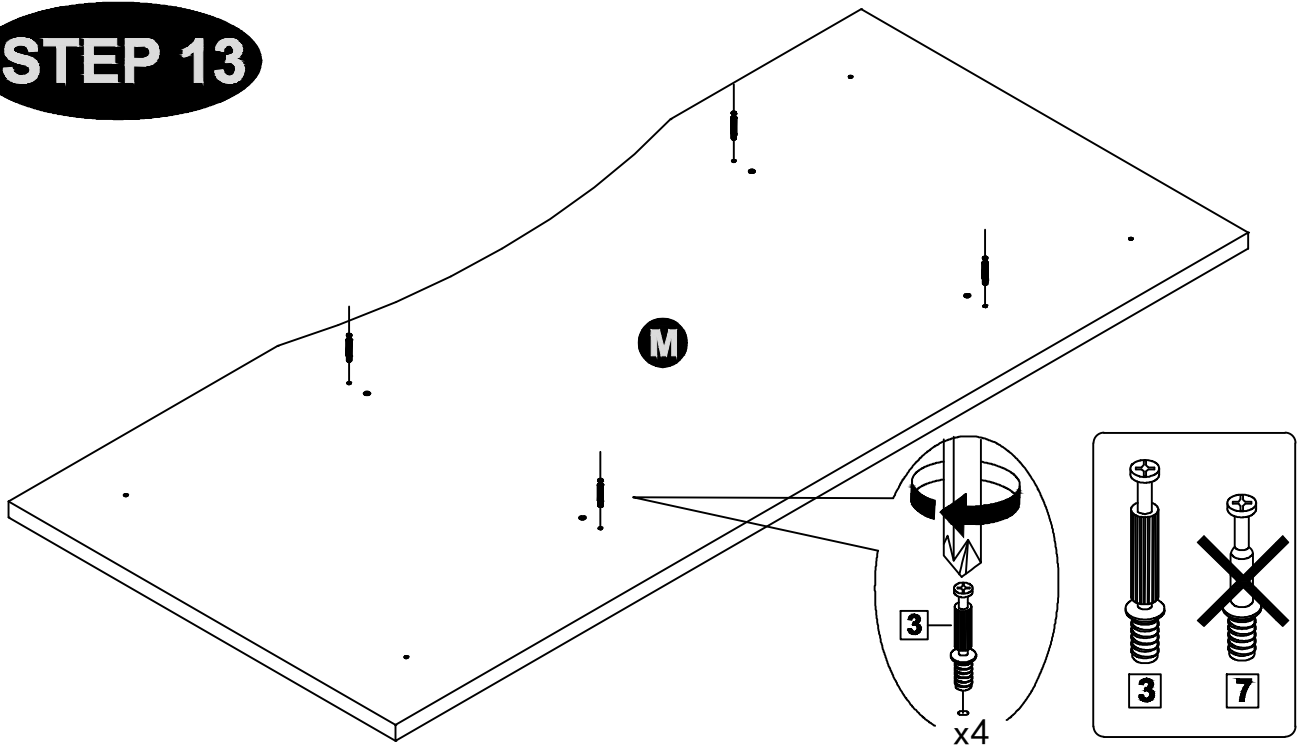
STEP 12



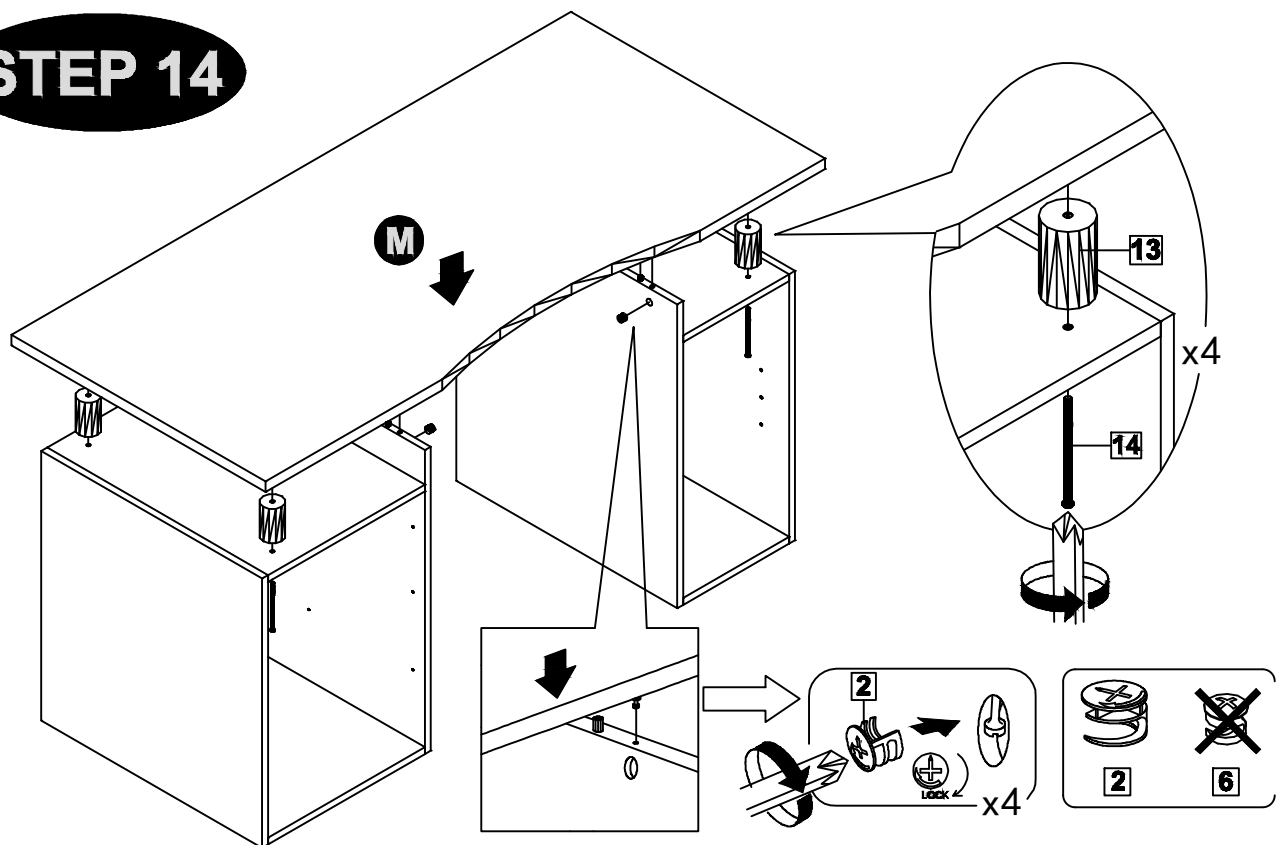
MODEL NAME:

HAMILTON DESK

STEP 13



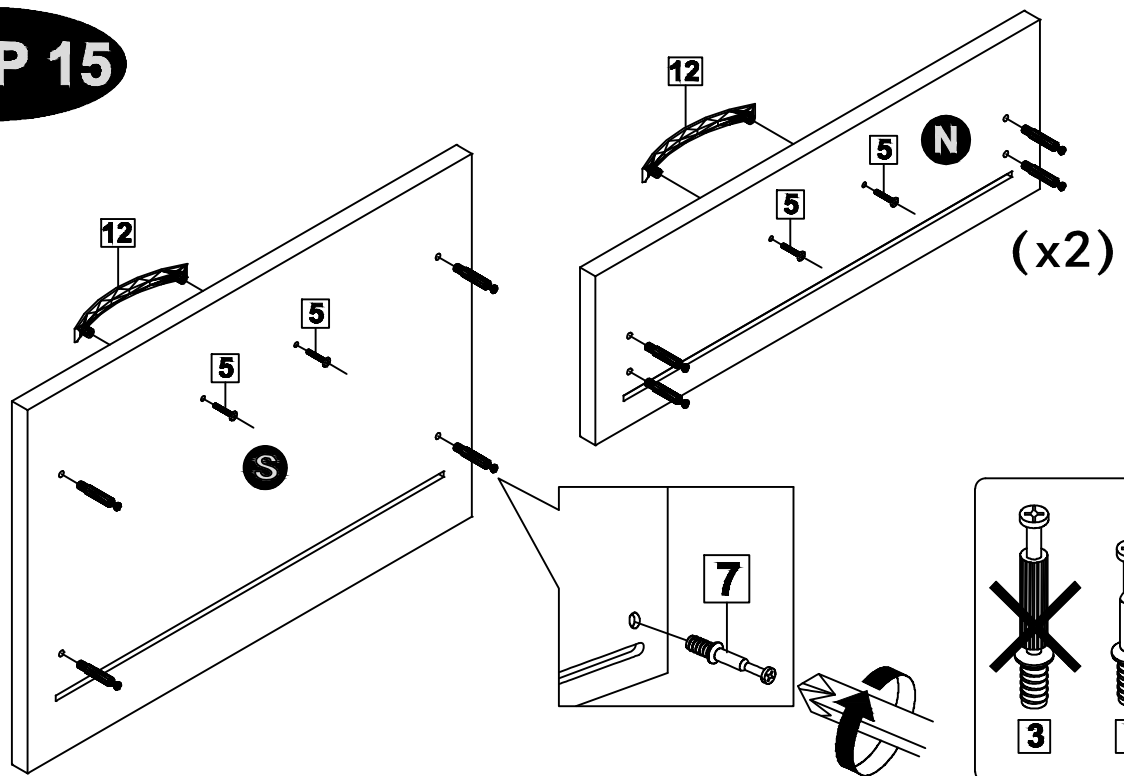
STEP 14



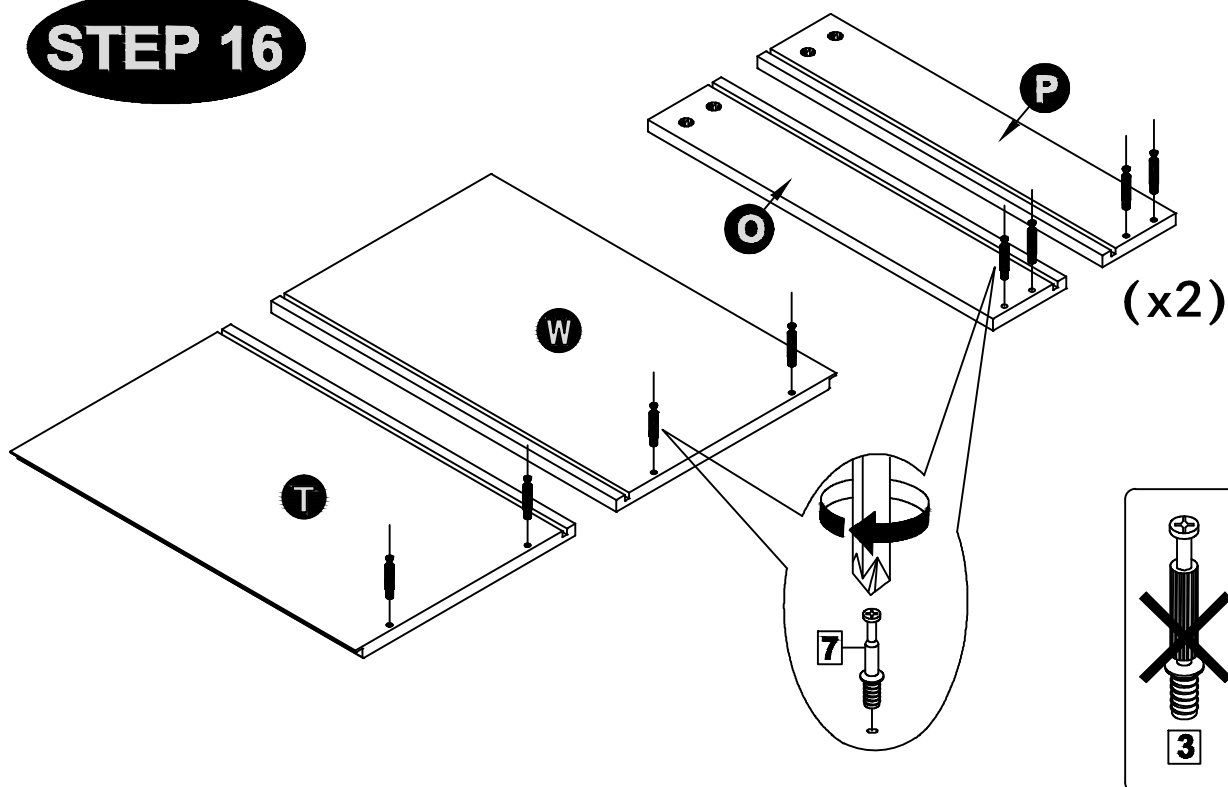
MODEL NAME:

HAMILTON DESK

STEP 15



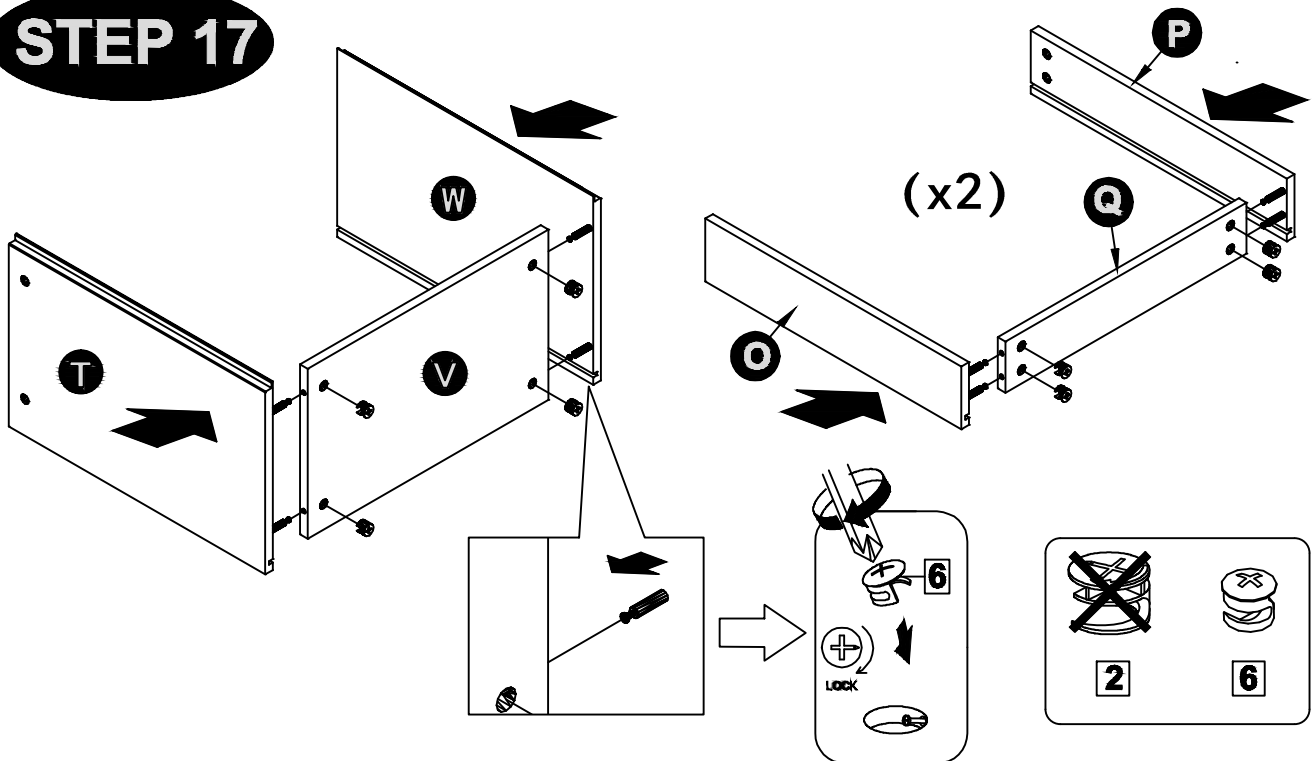
STEP 16



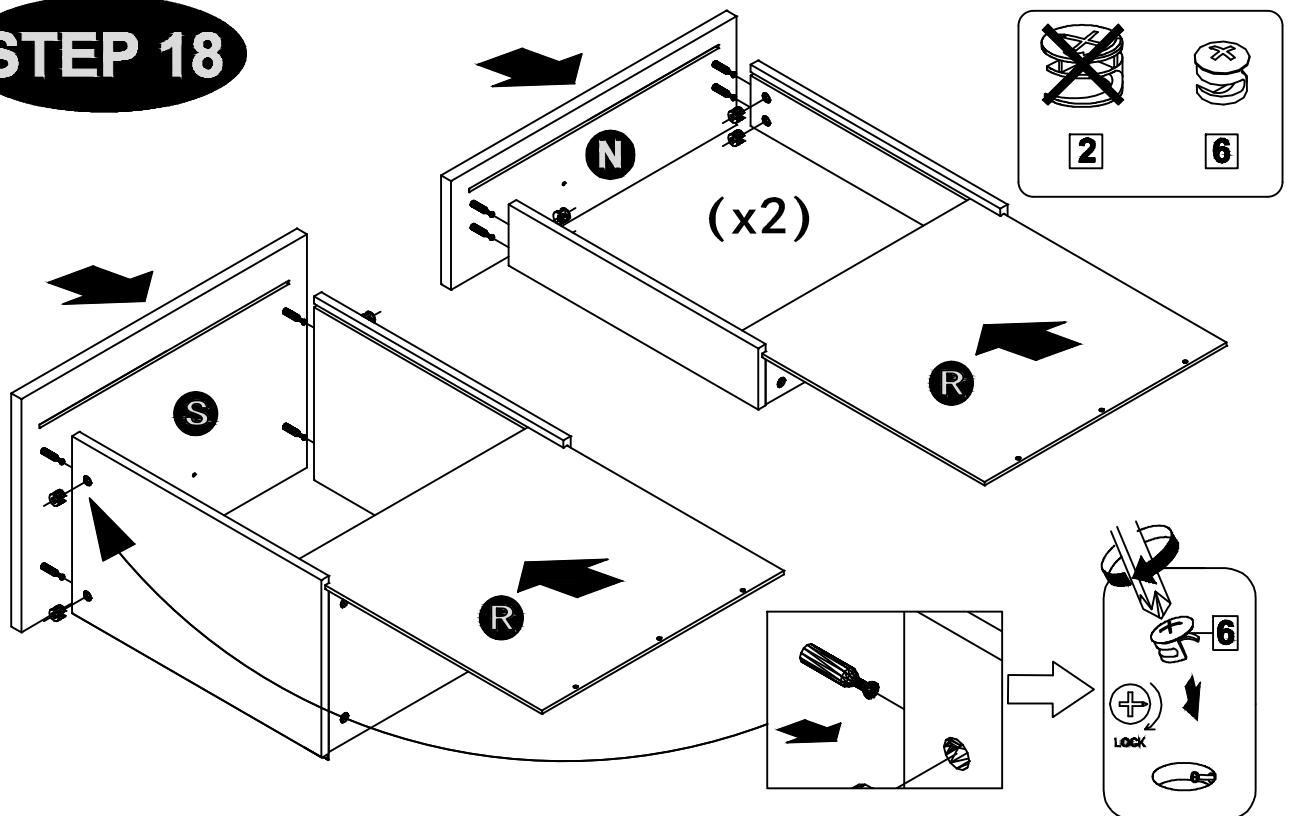
MODEL NAME:

HAMILTON DESK

STEP 17



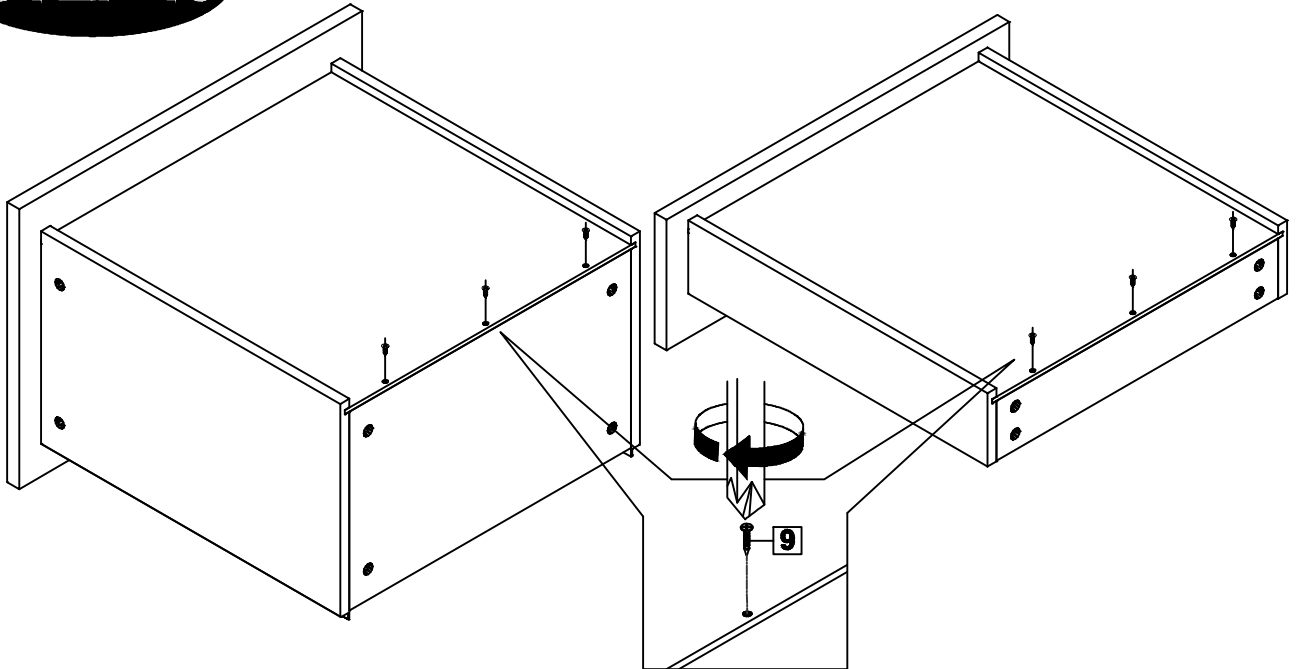
STEP 18



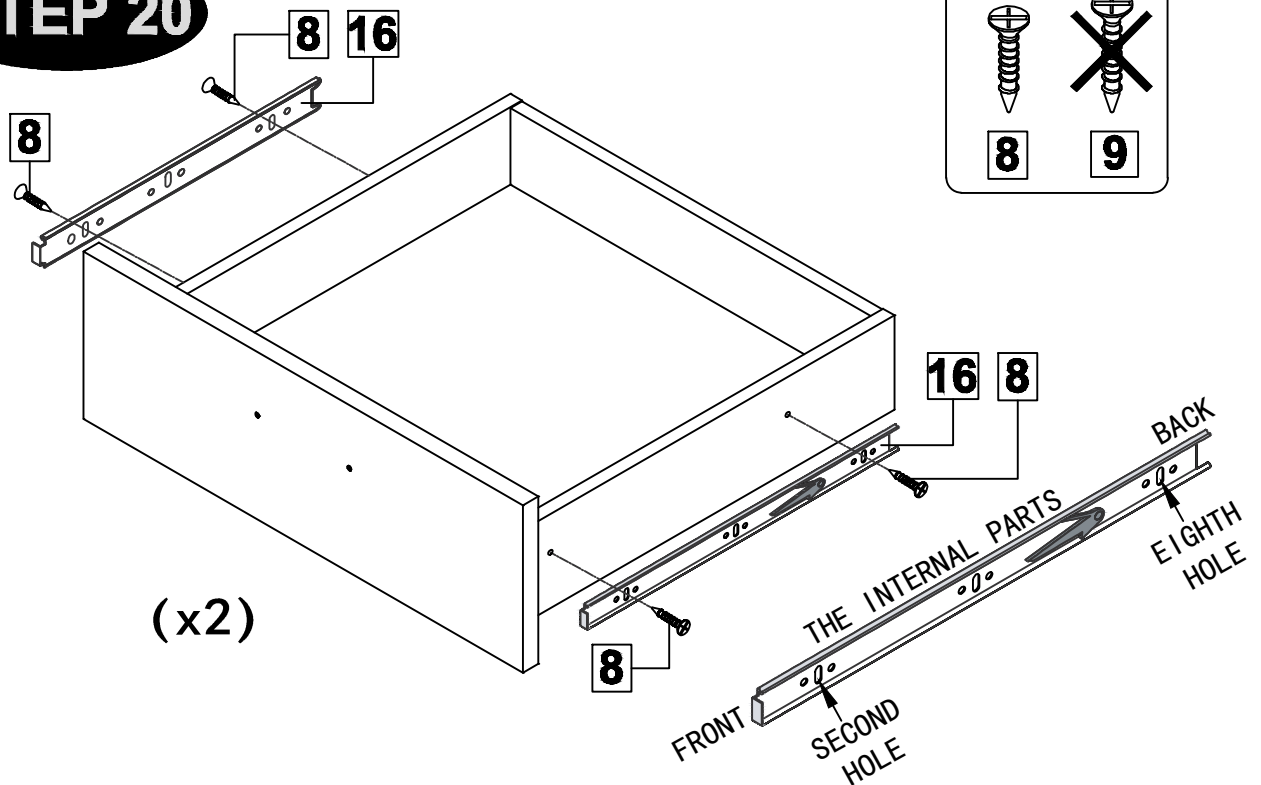
MODEL NAME:

HAMILTON DESK

STEP 19



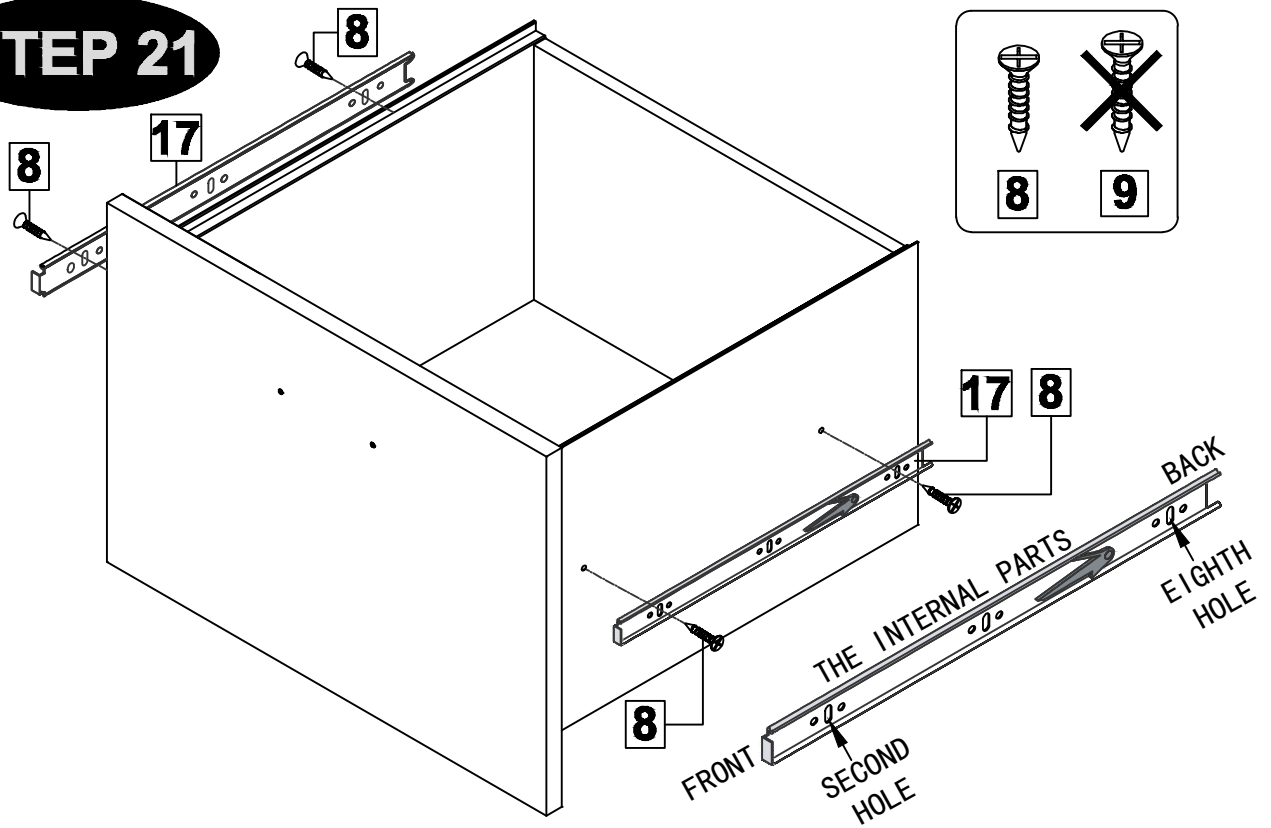
STEP 20



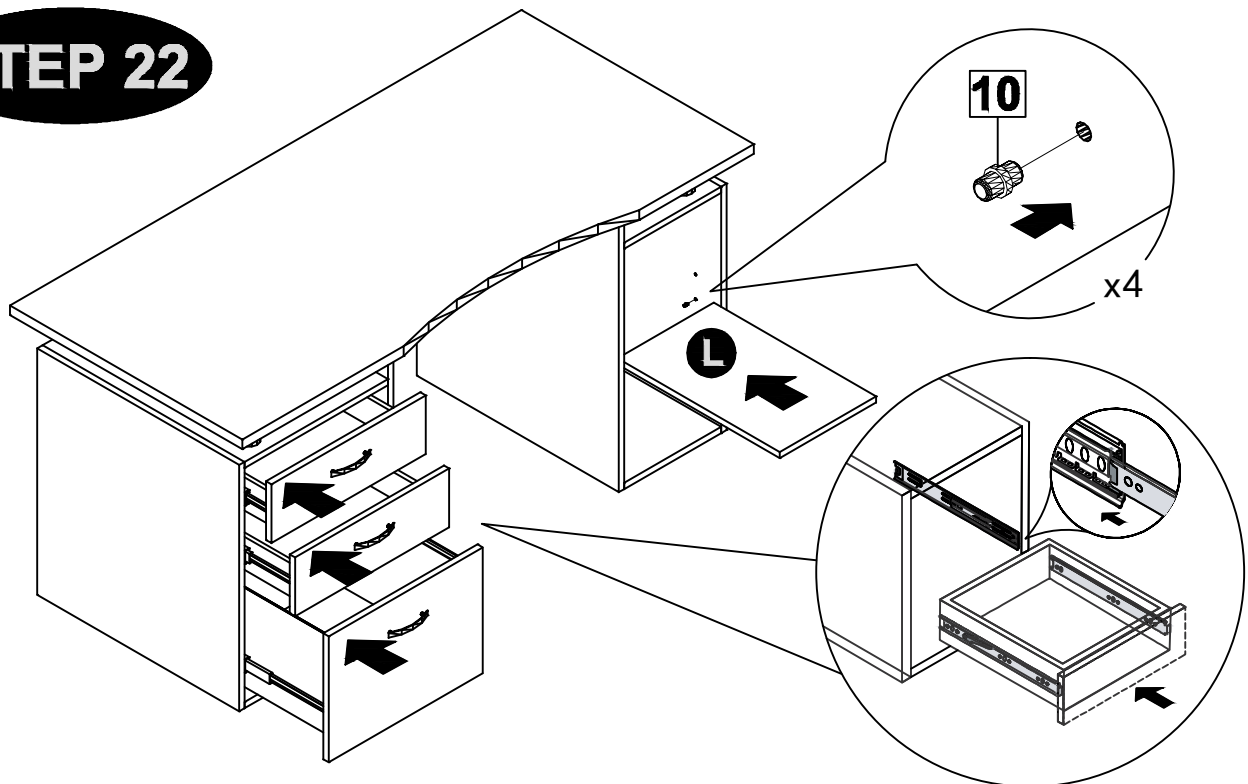
MODEL NAME:

HAMILTON DESK

STEP 21



STEP 22



MODEL NAME:

HAMILTON DESK

STEP 23

