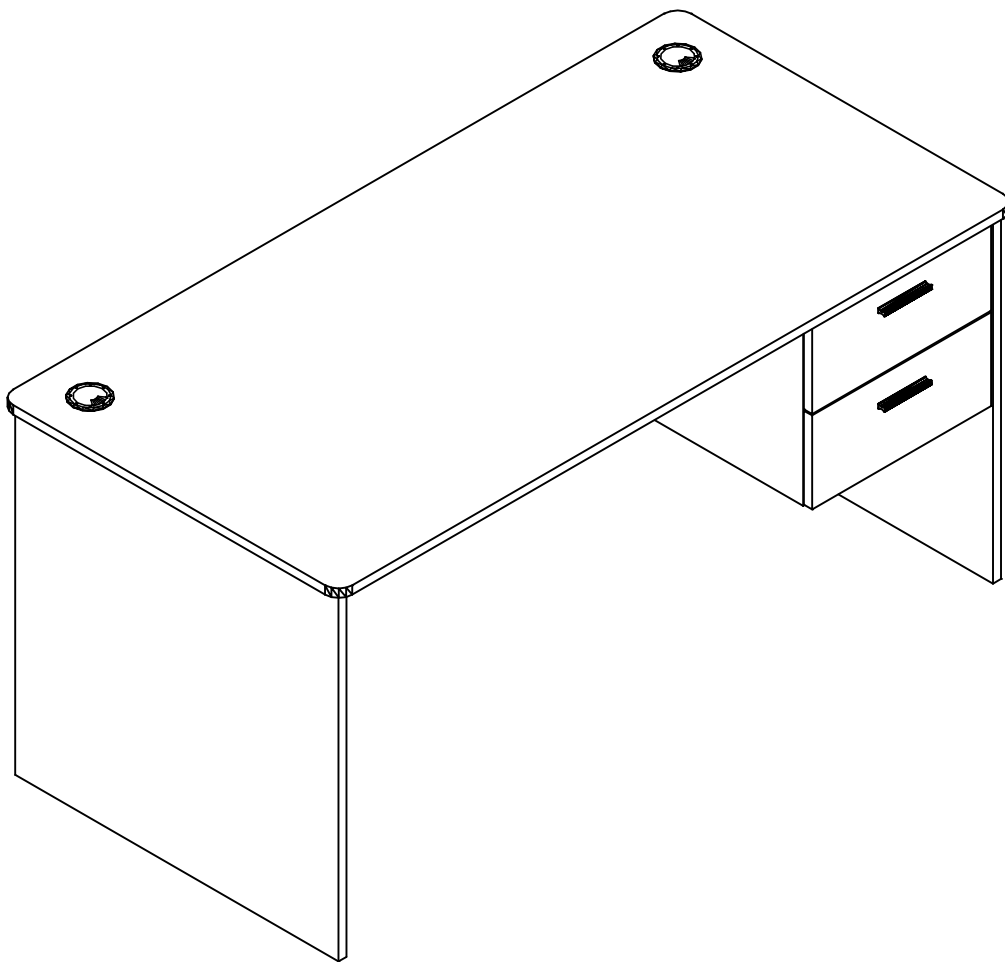




COMMERCIAL DESK 1200



INSTRUCTION MANUAL

The Maximum Weight this product can hold up to 50 kgs

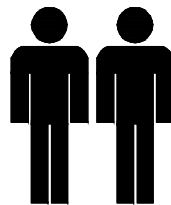
AFTER SALES SUPPORT

 (NZ) 0800 422 274

Assembly Details

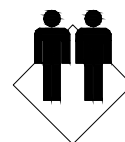
1 hr

APPROXIMATE ASSEMBLY TIME



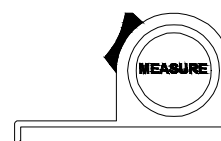
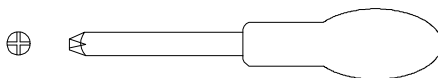
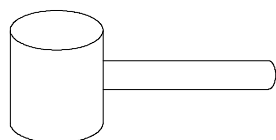
2 PERSONS OF ASSEMBLY

**FLOOR AREA
2 M X 1.5M**





REQUIRED ASSEMBLY SPACE

REQUIRED ASSEMBLY TOOLS



AFTER SALES SUPPORT

  0800 422 274

Tips before you start

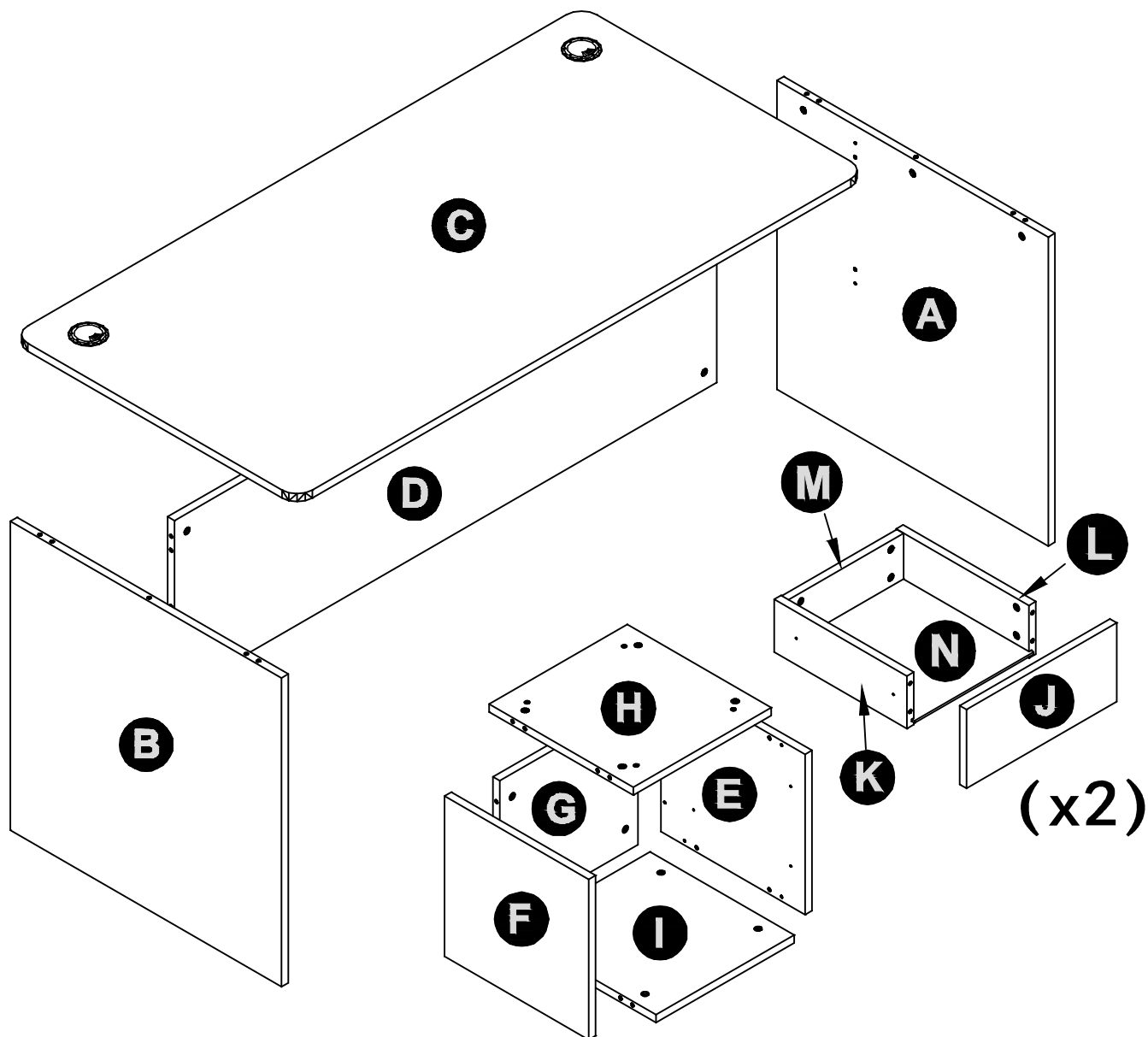
1. Please check that all parts are present before you start the assembly of your furniture.
2. For ease and speed of assembly, we recommend that before you commence each step of the assembly, that you identify all the parts required for that step.
3. For larger items, please ensure that you have sufficient space and people (as indicated on page 1) to assemble your product safely.
4. We recommend that, where possible, all items are assembled near to the area in which
5. they will be placed in use, to avoid moving the product unnecessarily once assembled.
6. For the protection of your furniture, we recommend that the product is placed on a protected surface during assembly to prevent any damage.
7. During assembly please take care not to over-tighten any fittings, as this may damage the product. Do not use power tools.
8. Always place the product on a flat, steady and stable surface.
9. Do not stand on the product. Do not use the product as a stepladder.
10. This product is intended for indoor, household use only as it is a non-industrial product.
11. Please use caution and care when lifting the product to avoid personal injury and/or product damage.

Care and maintenance


- ✓ Please periodically check all fittings and re-tighten as necessary.
- ✓ To clean your item, please use a damp cloth and wipe clean.
- ✓ Never allow any kind of liquid to remain on your furniture.
Absorption can cause wood to warp or finishes to de-laminate.
- ✓ Please do not place hot items (eg. hot drinks) directly on to the surface.
- ✓ Please do not drag and pull your furniture.

Part List

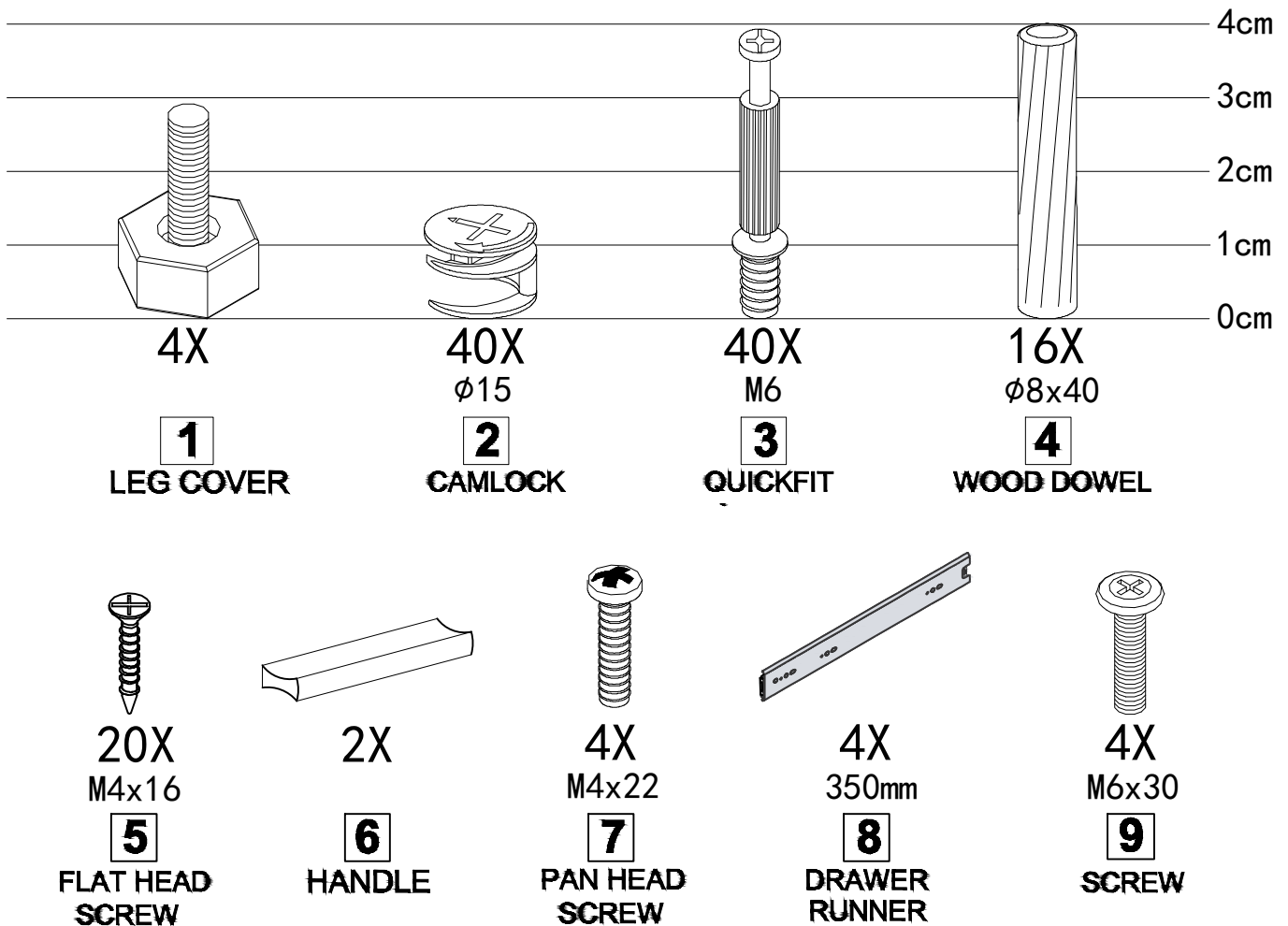
NO.	PART LIST	QTY	NO.	PART LIST	QTY
(A)	RIGHT SIDE PANEL	1	(H)	CABINET TOP PANEL	1
(B)	LEFT SIDE PANEL	1	(I)	CABINET BOTTOM PANEL	1
(C)	TOP PANEL	1	(J)	DRAWER FRONT	2
(D)	SUPPORT PANEL	1	(K)	DRAWER LEFT SIDE PANEL	2
(E)	CABINET RIGHT PANEL	1	(L)	DRAWER RIGHT SIDE PANEL	2
(F)	CABINET LEFT PANEL	1	(M)	DRAWER BACK PANEL	2
(G)	CABINET BACK PANEL	1	(N)	DRAWER BASE	2



AFTER SALES SUPPORT

 (NZ) 0800 422 274

Hardware List

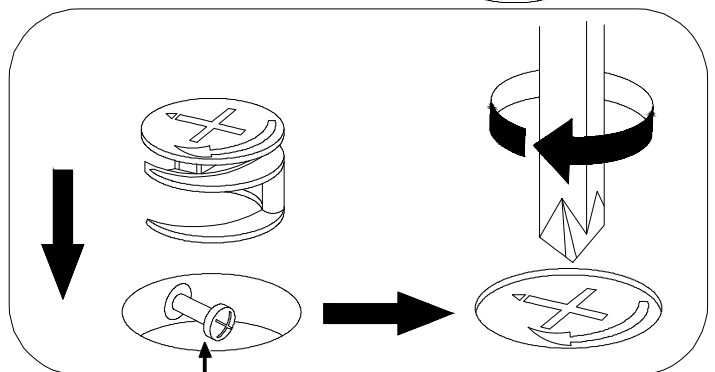
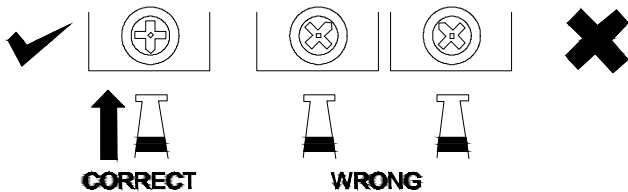


SPECIAL TIPS FOR FITTING CAM-LOCKS AND QUICKFIT

CAM-LOCK



WHEN FITTING CAMLOCK
ENSURE STARTING POSITION IS CORRECT
BEFORE YOU INSERT CONNECTING QUICKFIT
TURN CLOCKWISE UNTIL SECURE



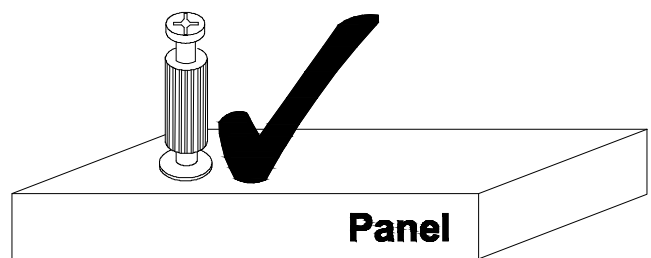
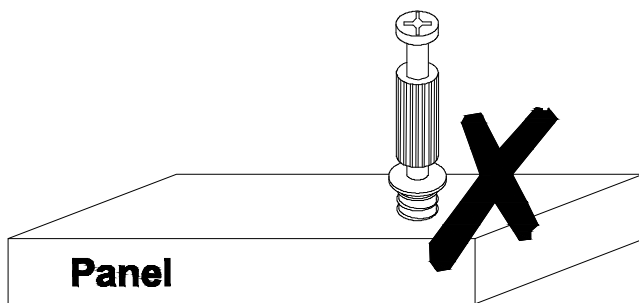
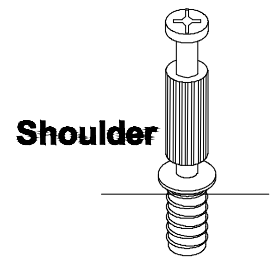
Quickfit head needs to be in centre

AFTER SALES SUPPORT

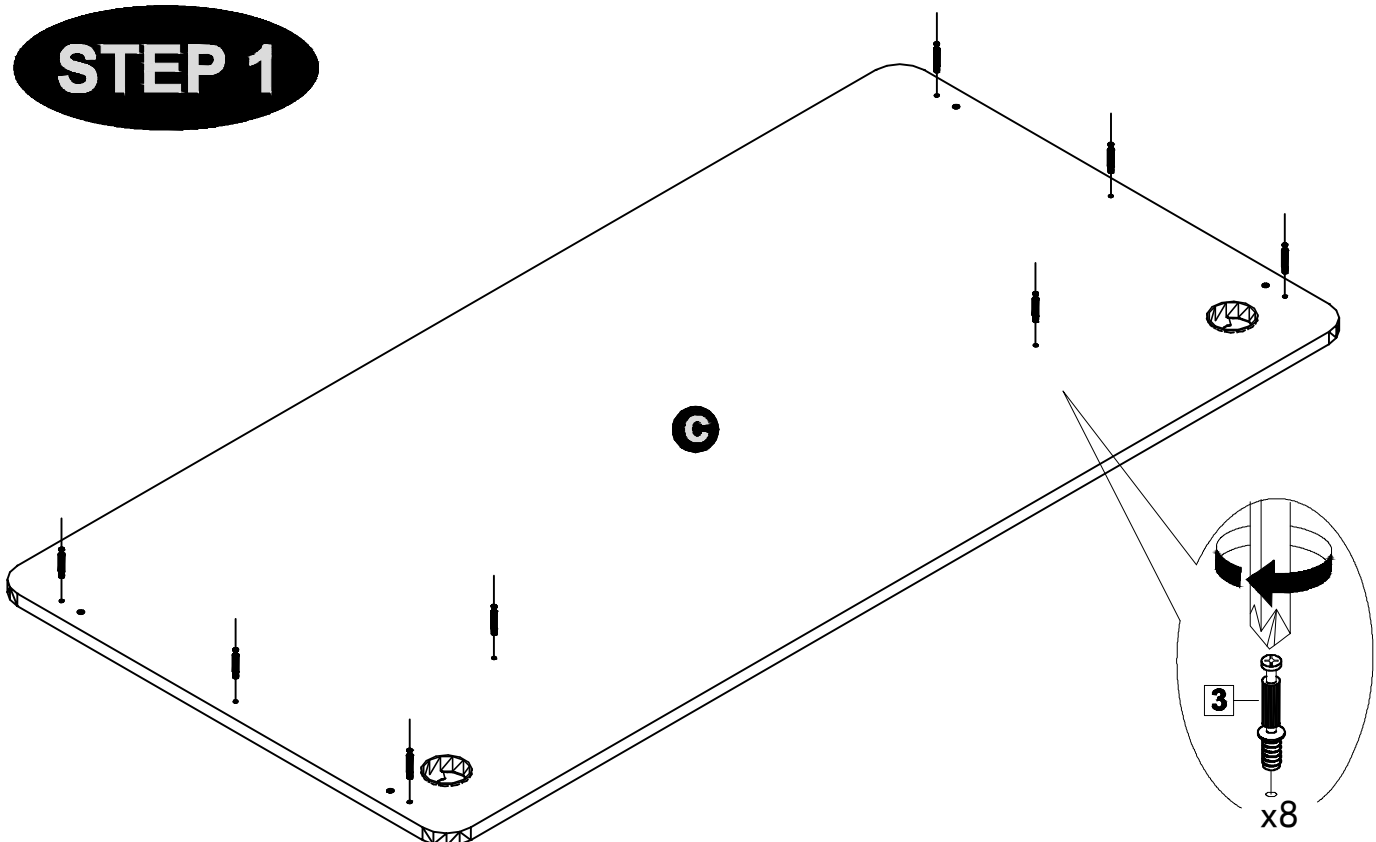
☎ (NZ) 0800 422 274

QUICKFIT

Tighten until shoulder is flush with panel. Do not overtighten or undertighten (see example below)

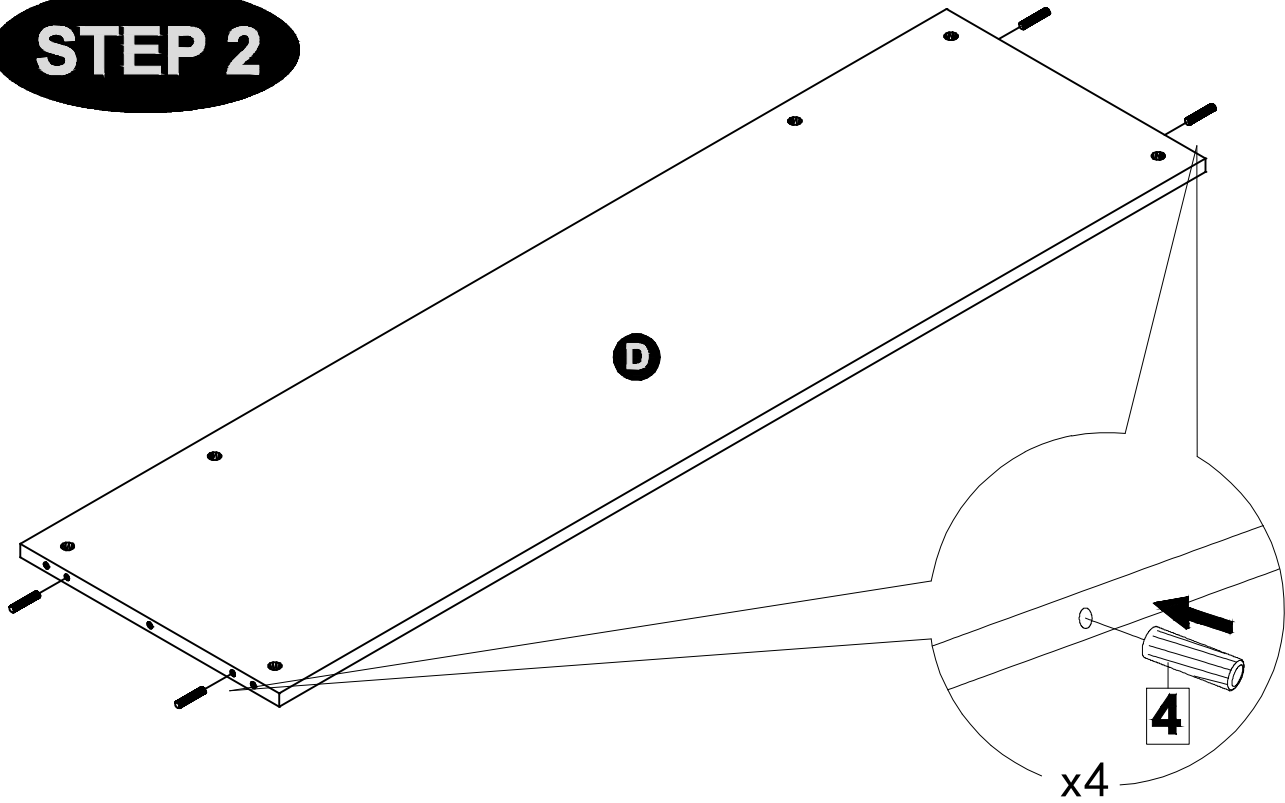


STEP 1

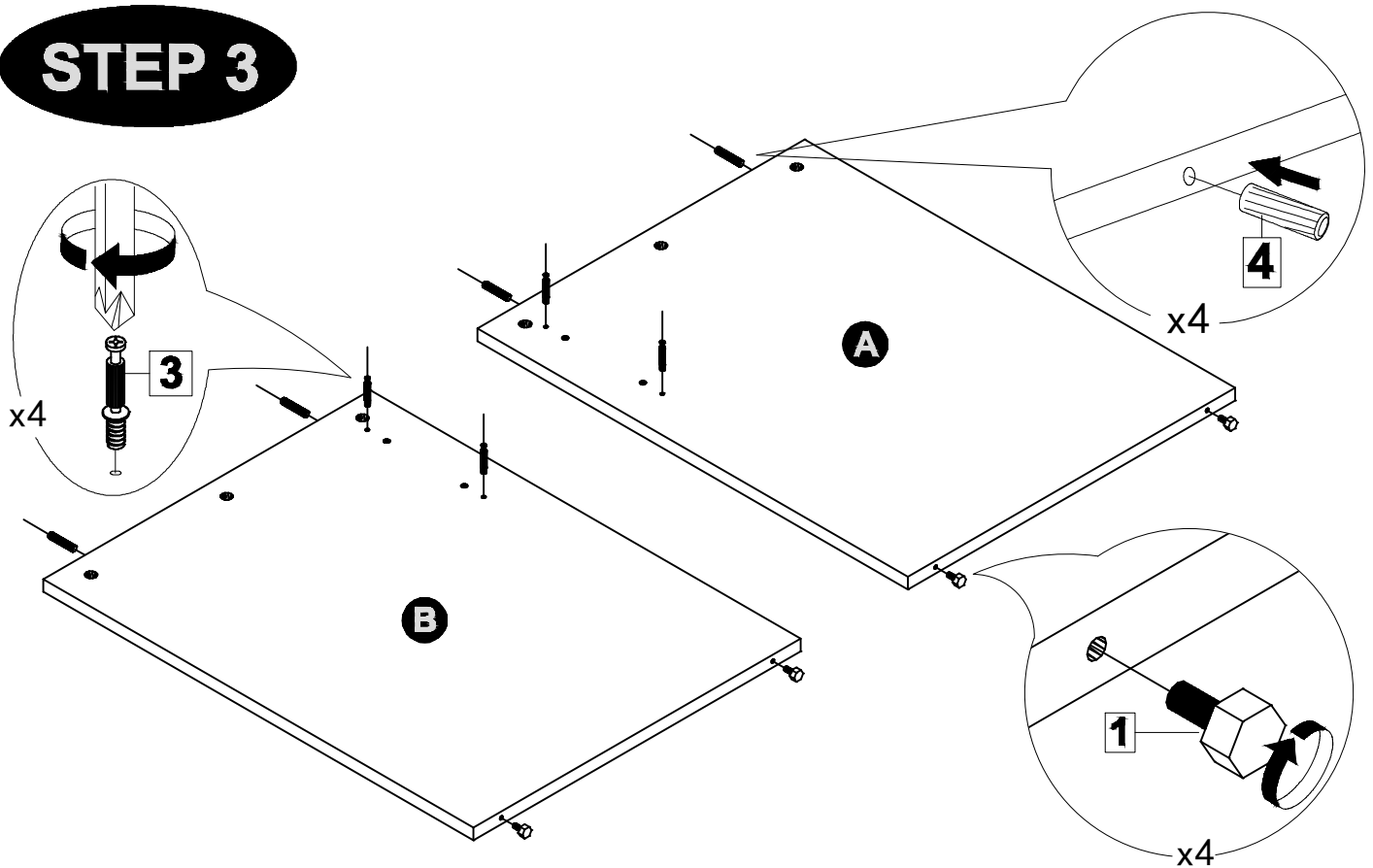


6

STEP 2



STEP 3

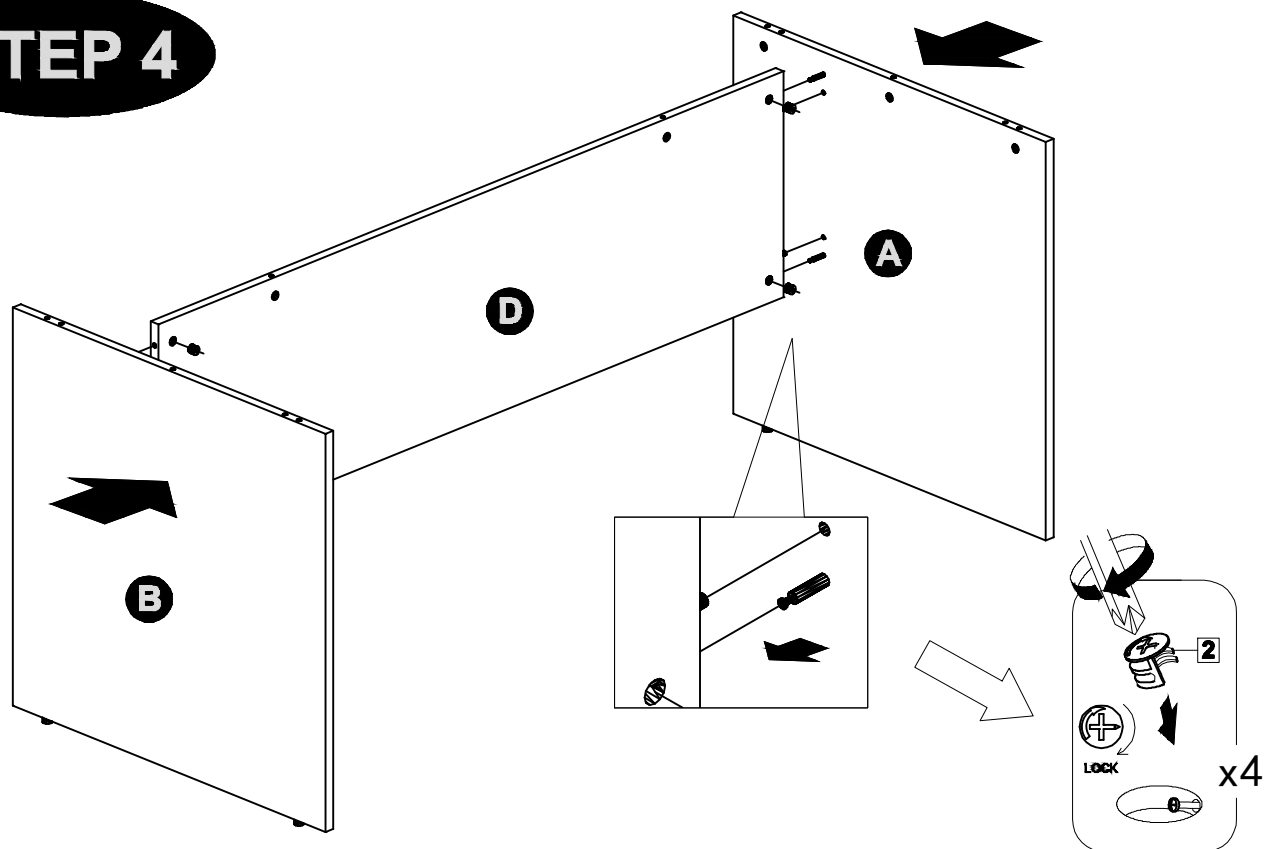


AFTER SALES SUPPORT

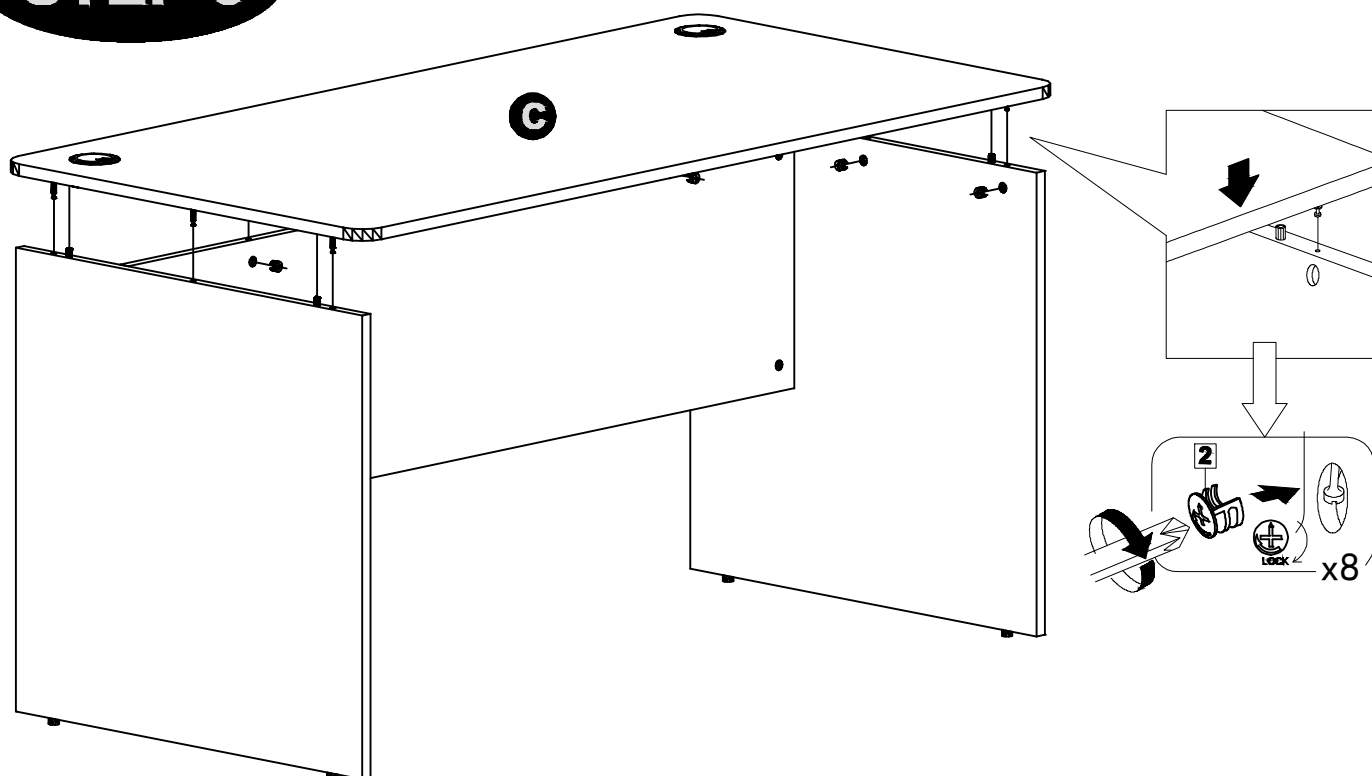
 **NZ** 0800 422 274

7

STEP 4



STEP 5

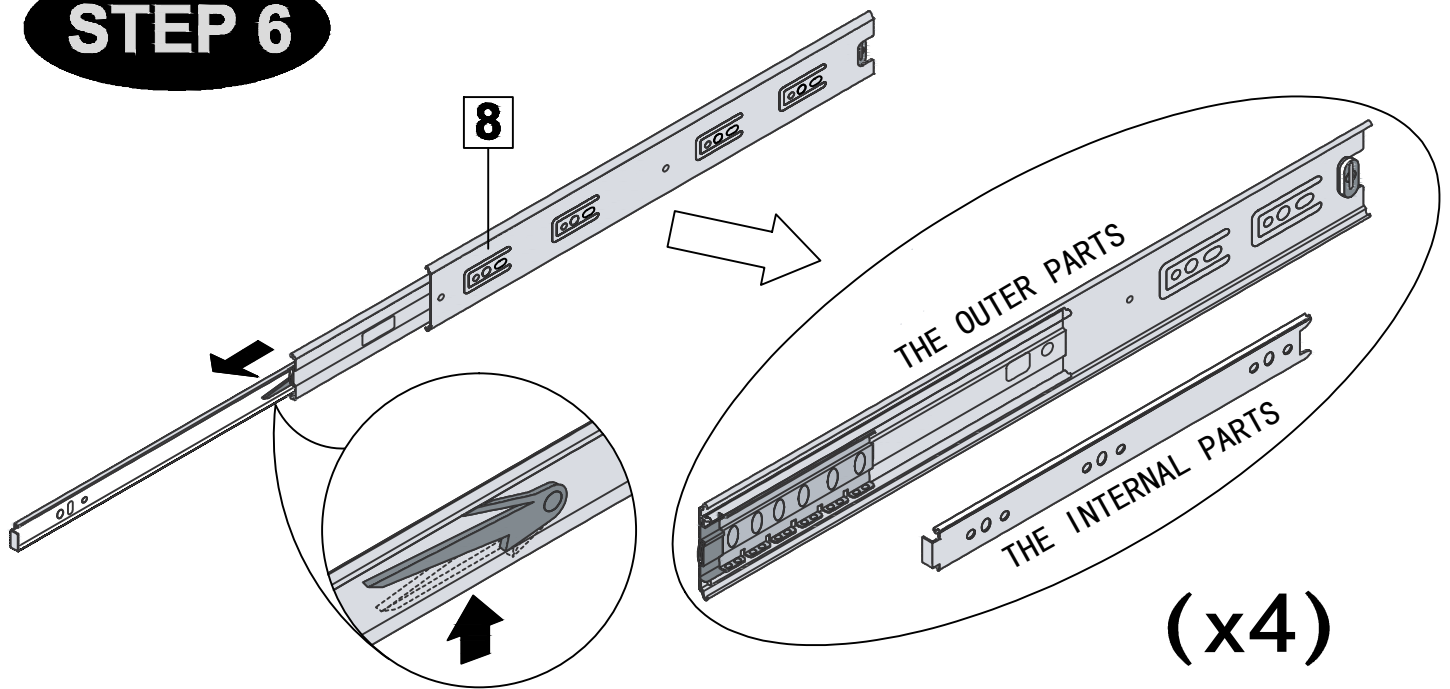


AFTER SALES SUPPORT

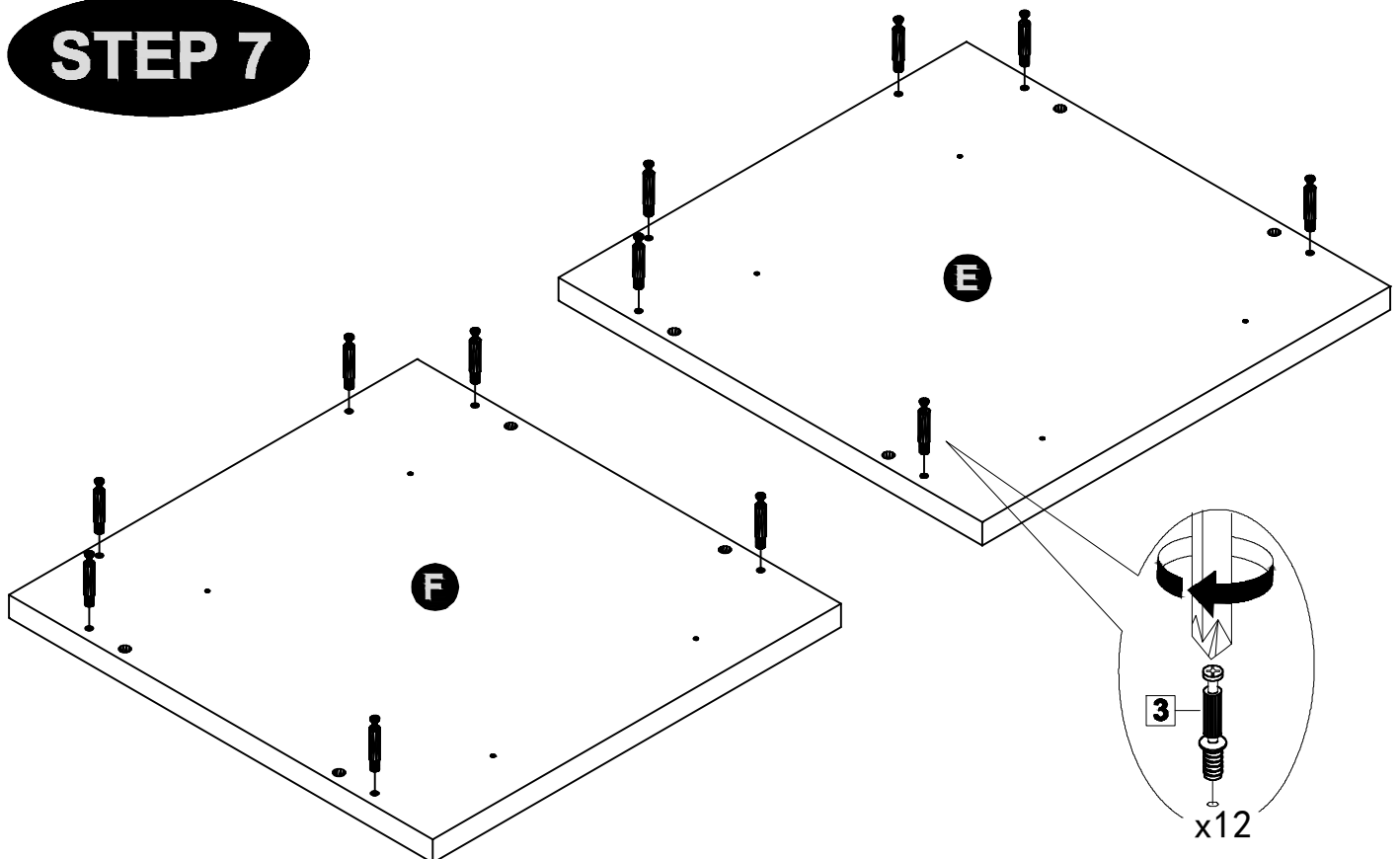
 (NZ) 0800 422 274

8

STEP 6



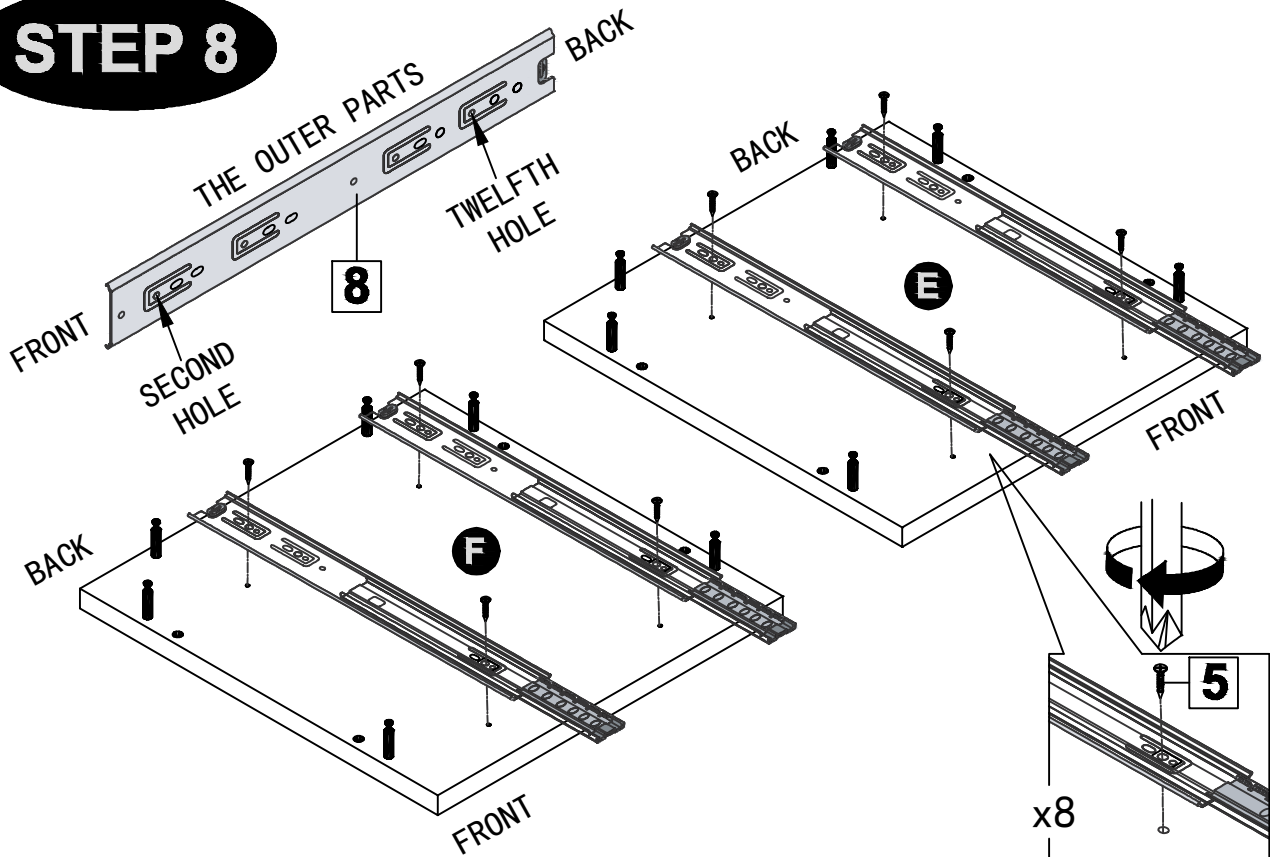
STEP 7



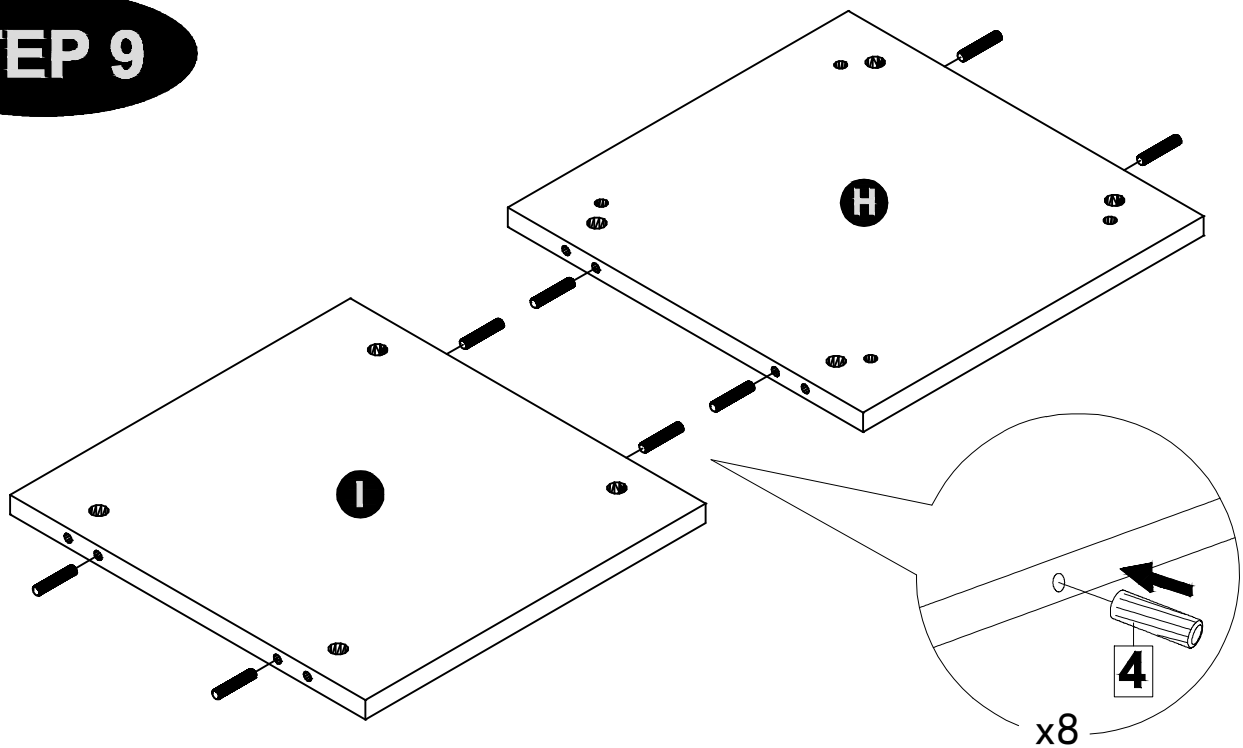
AFTER SALES SUPPORT

 **NZ** 0800 422 274

STEP 8

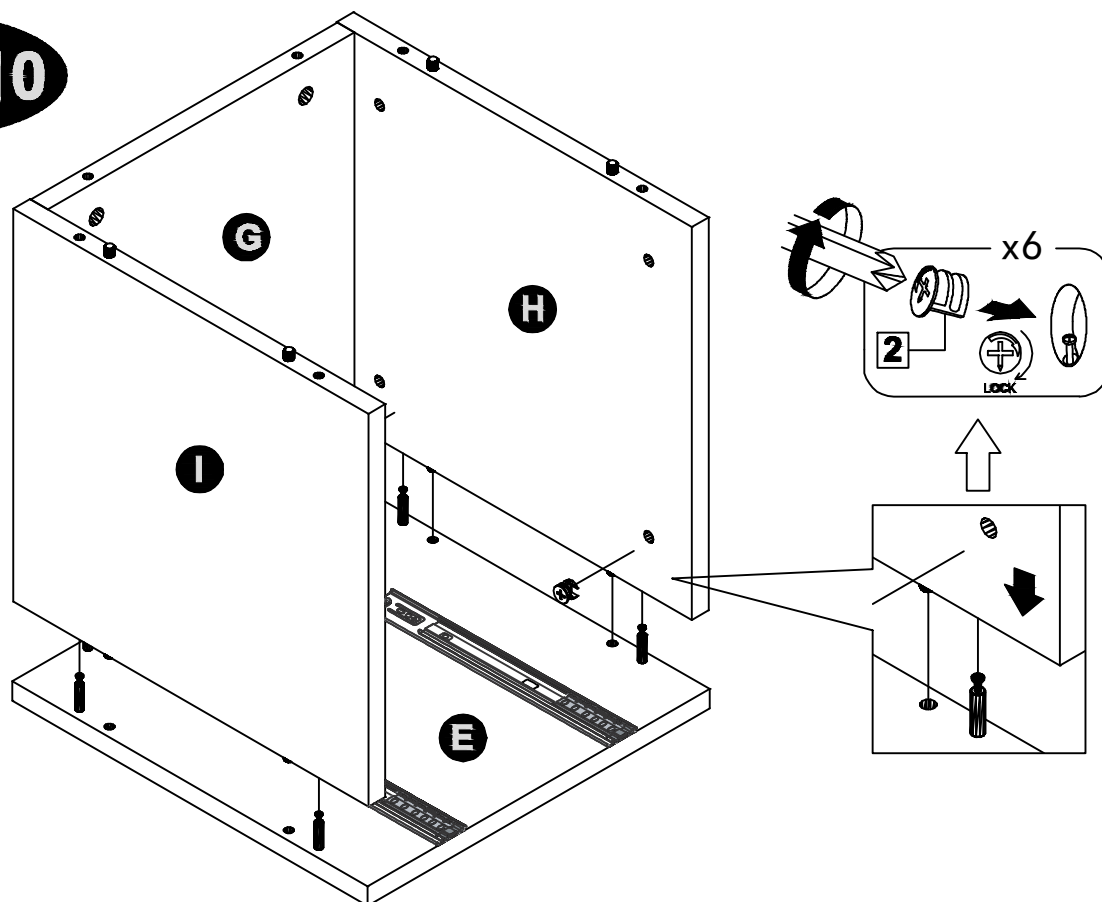


STEP 9

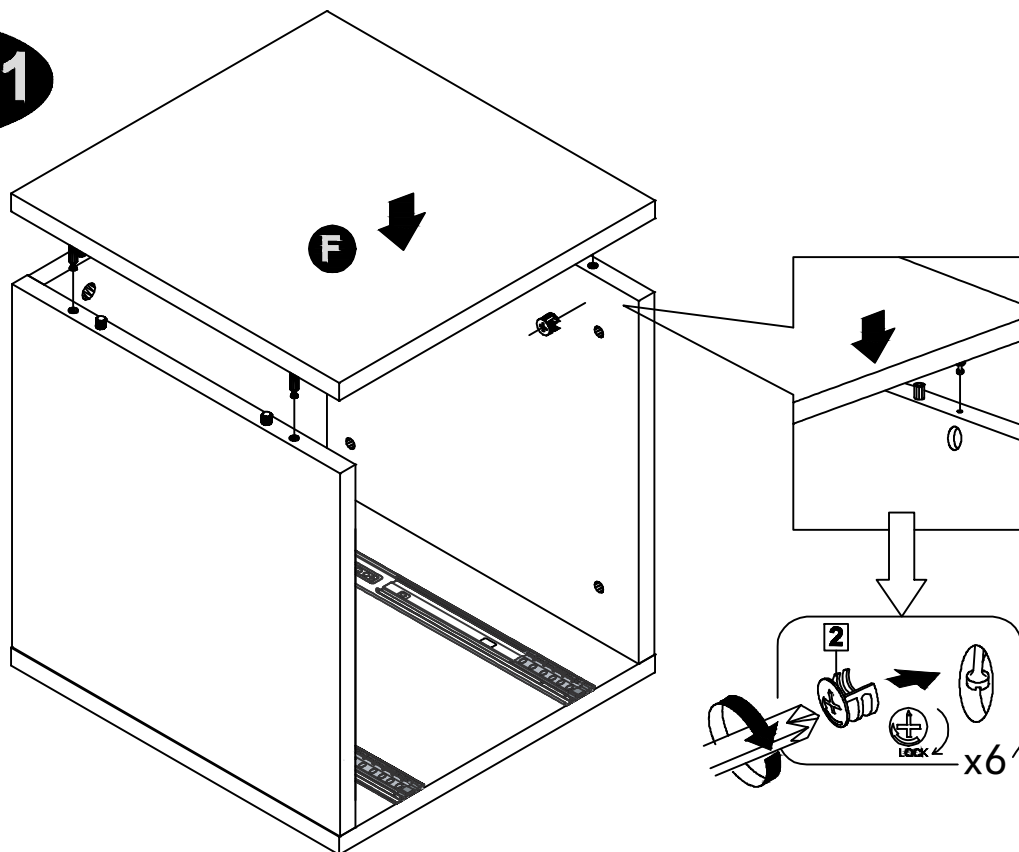


10

STEP 10



STEP 11

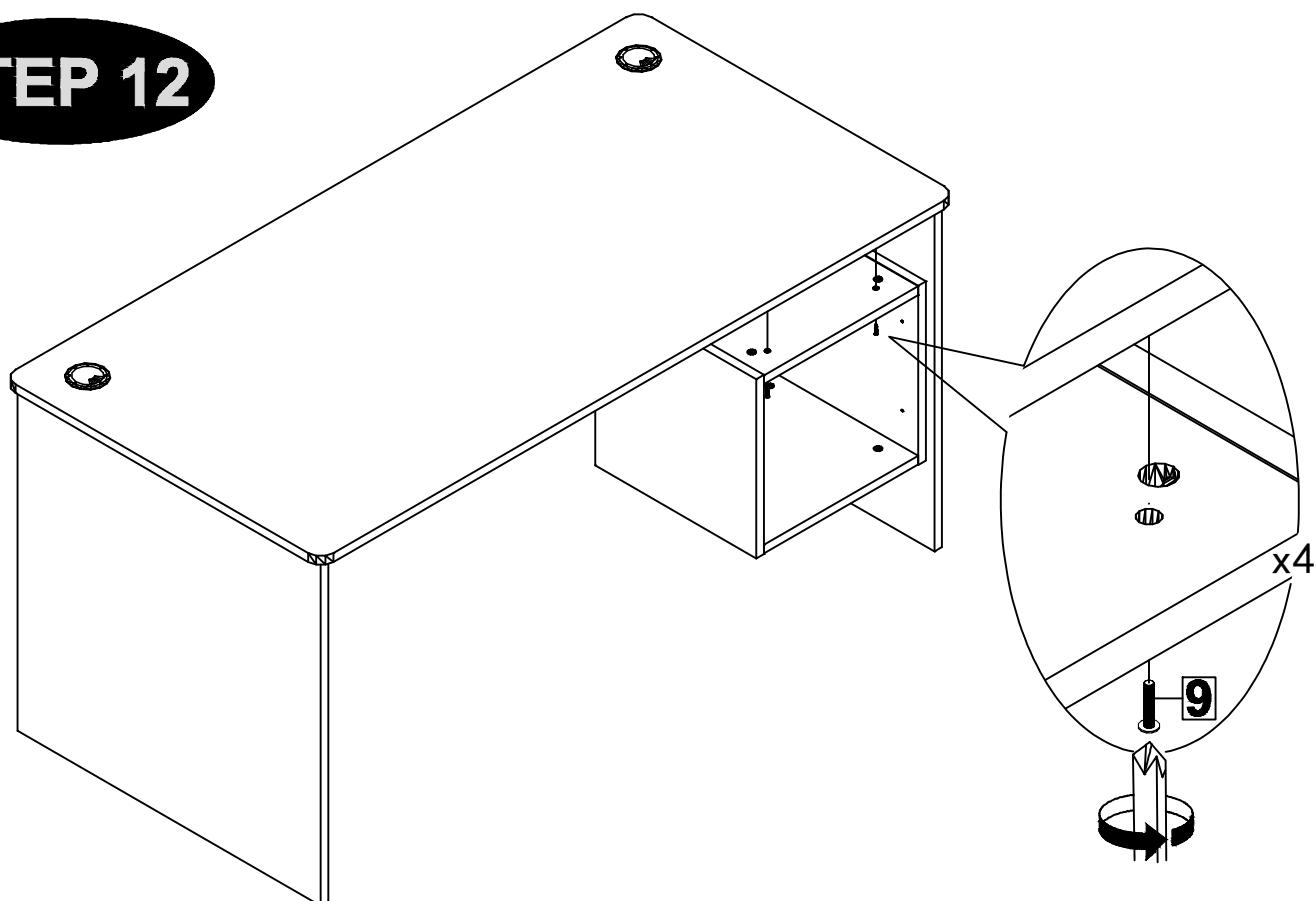


AFTER SALES SUPPORT

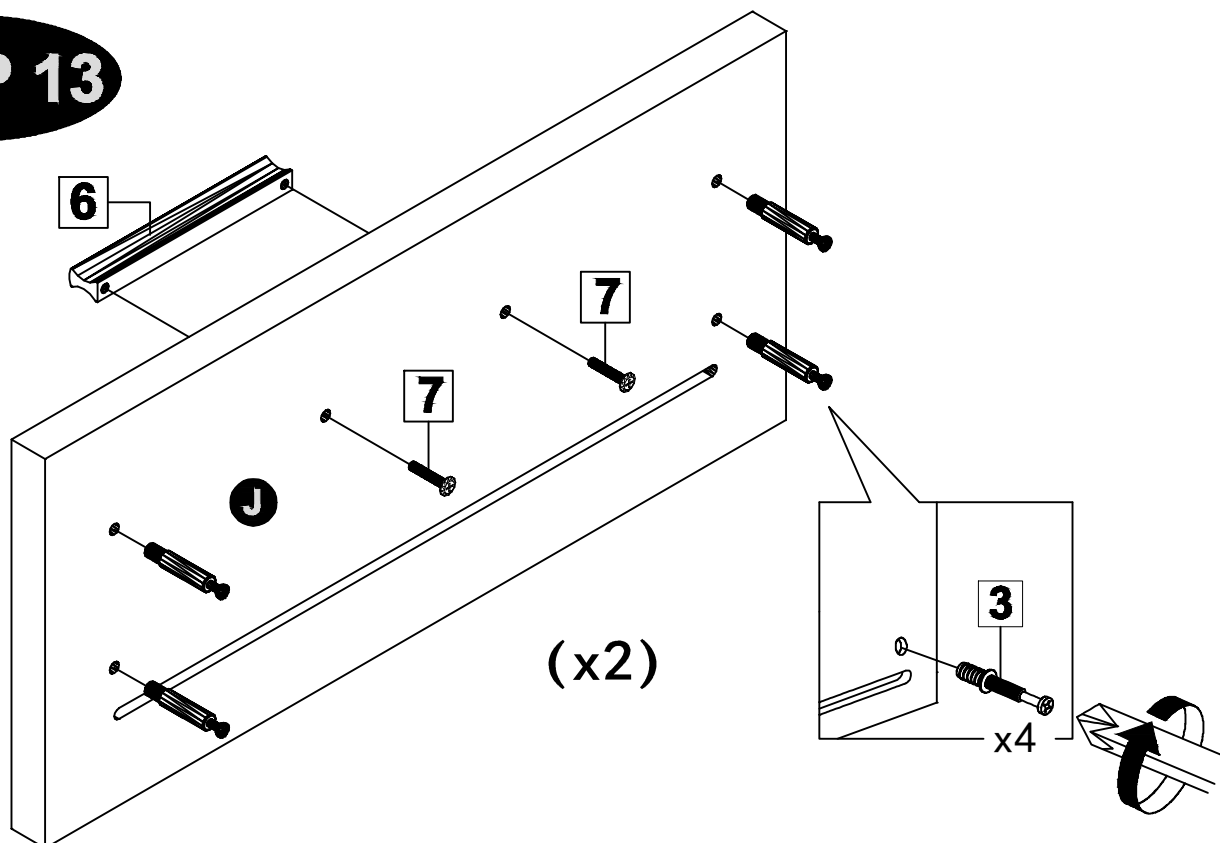
☎ (NZ) 0800 422 274

11

STEP 12



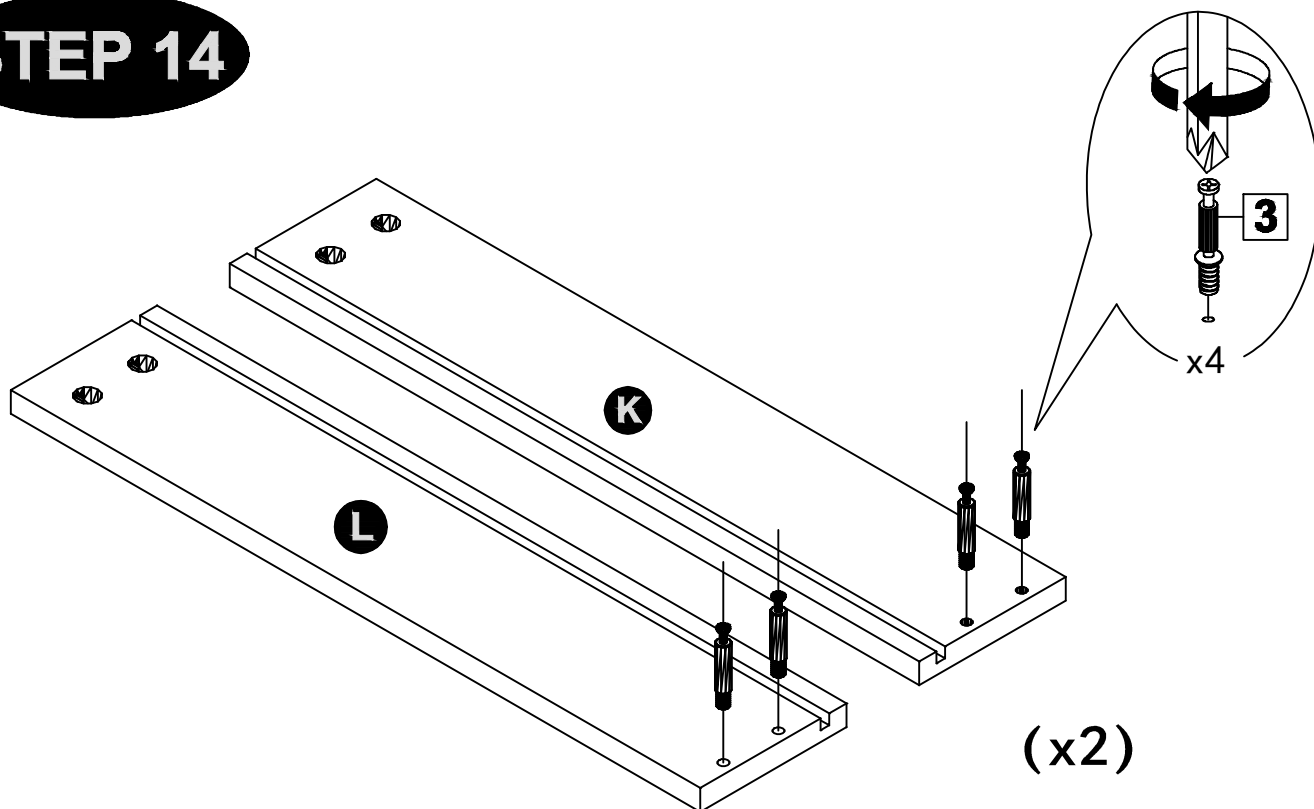
STEP 13



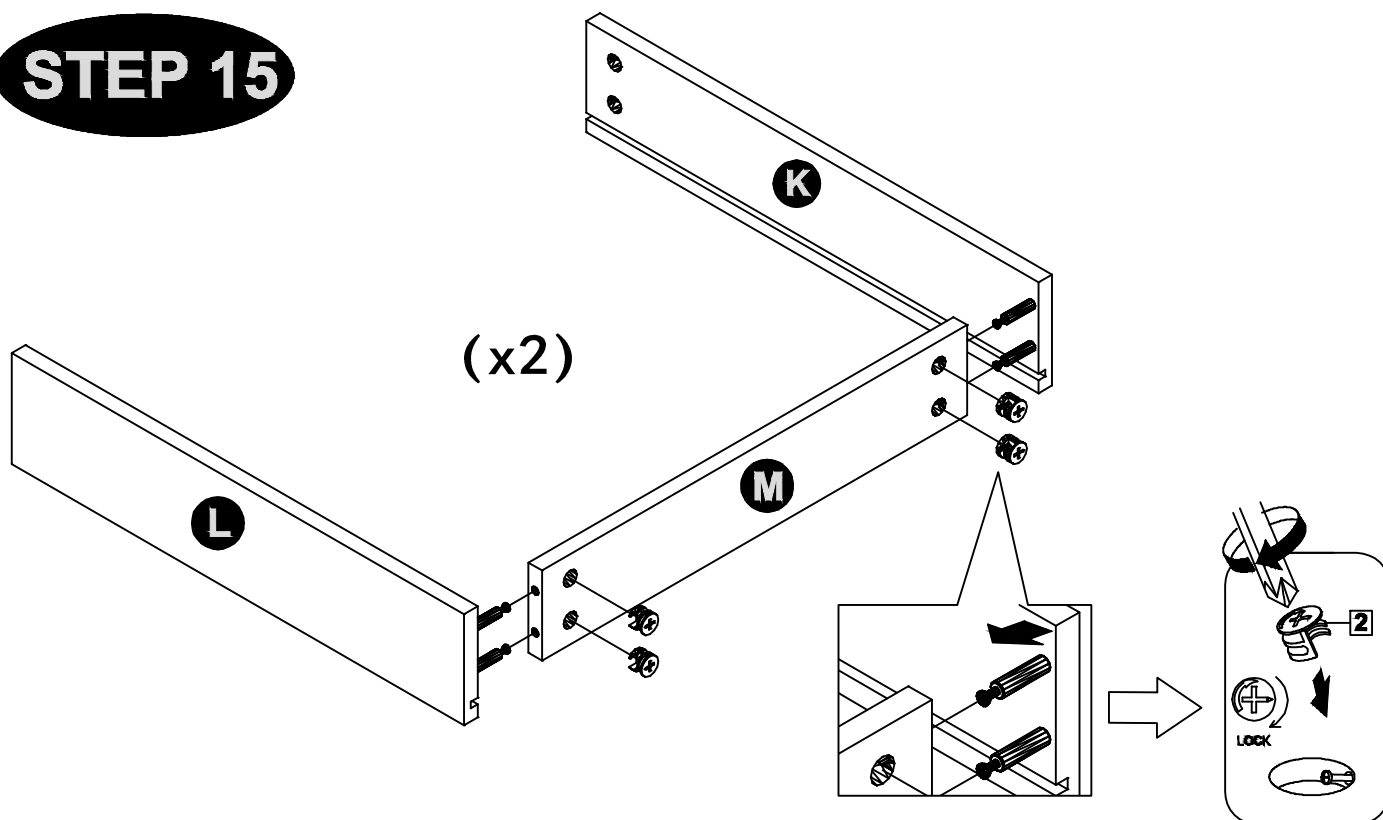
AFTER SALES SUPPORT

 (NZ) 0800 422 274

STEP 14

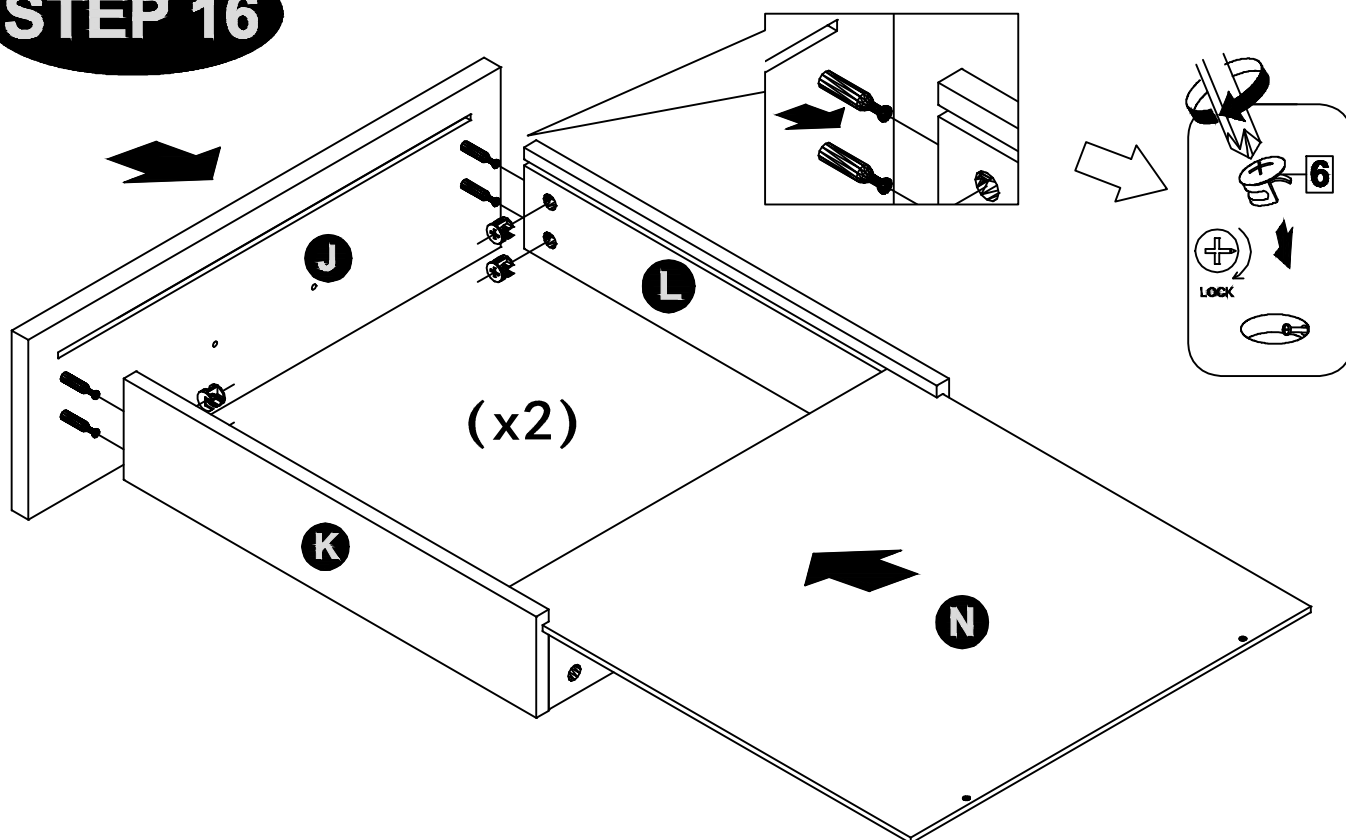


STEP 15

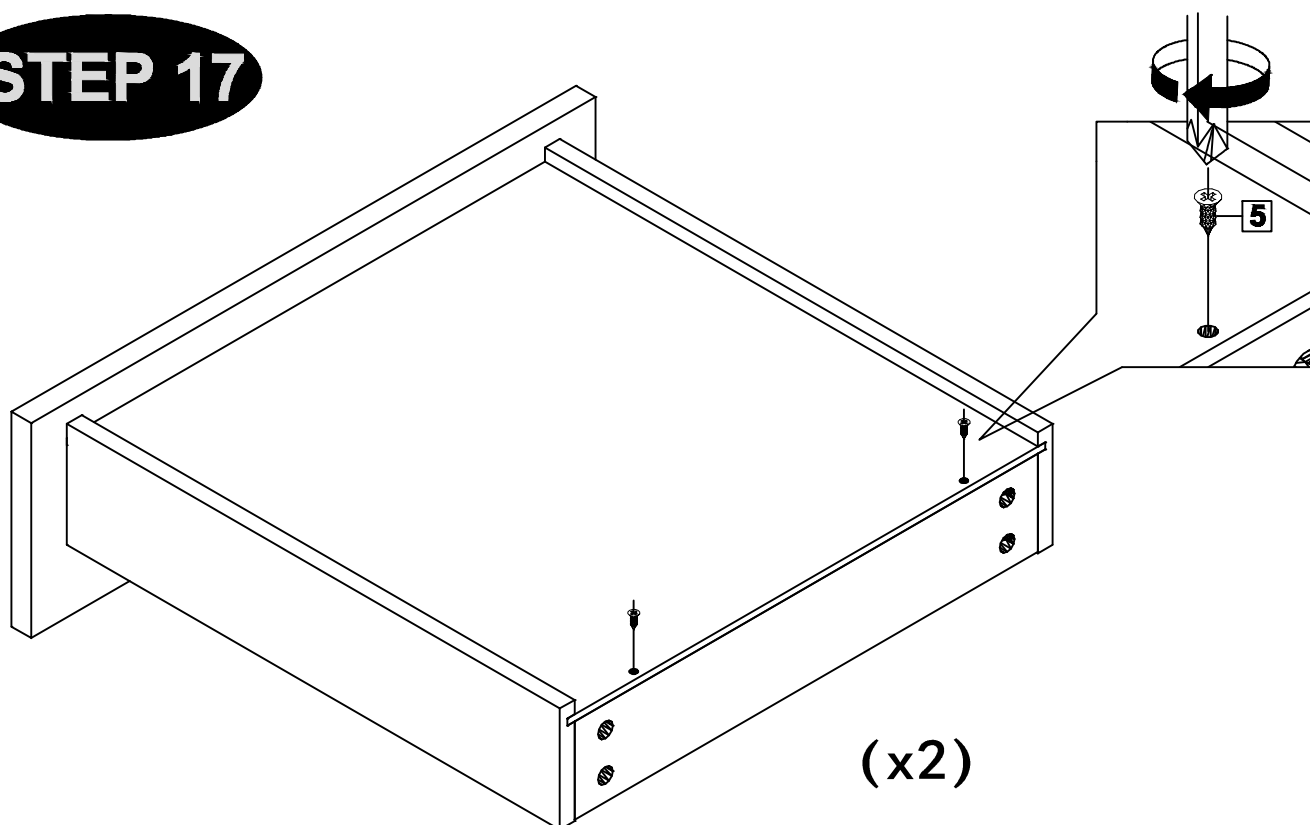


13

STEP 16



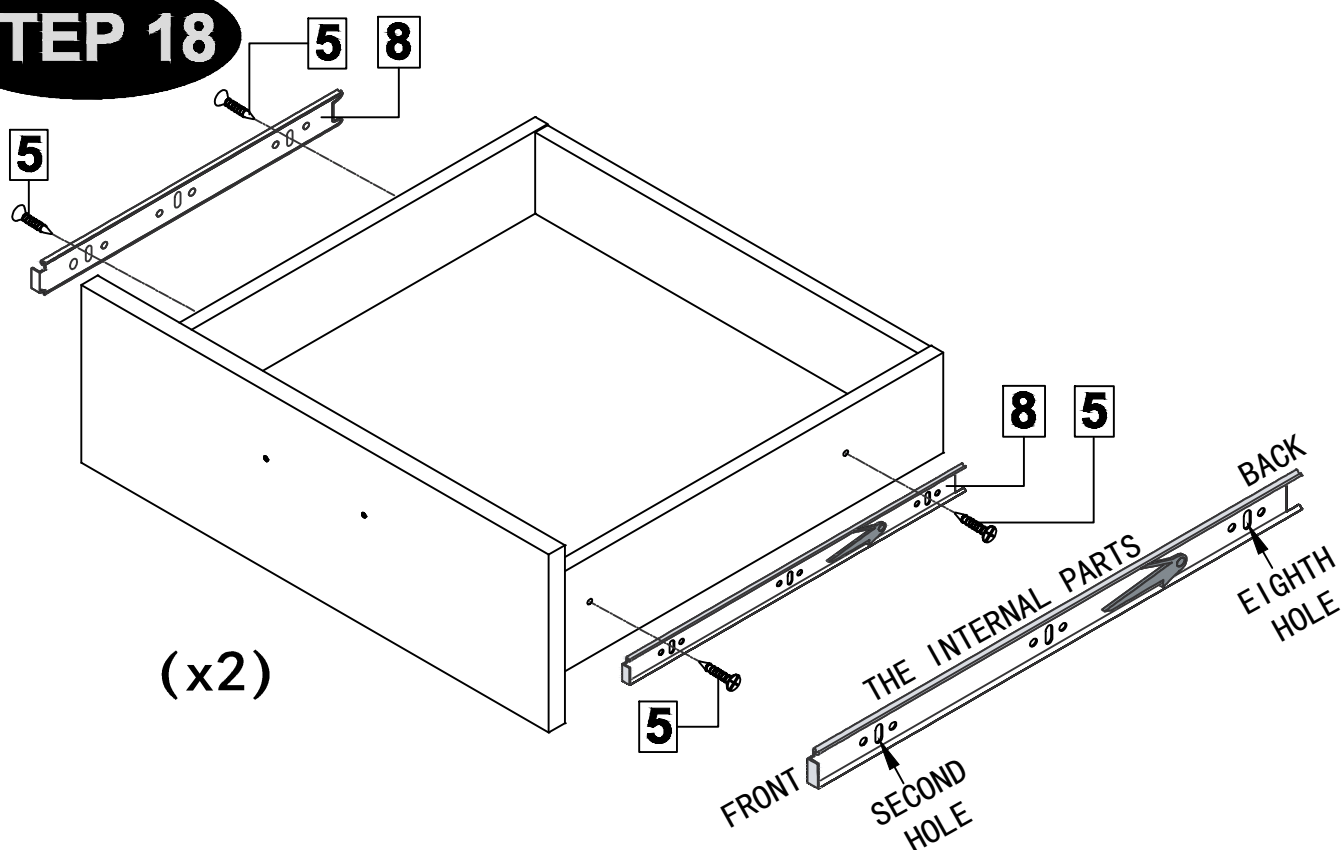
STEP 17



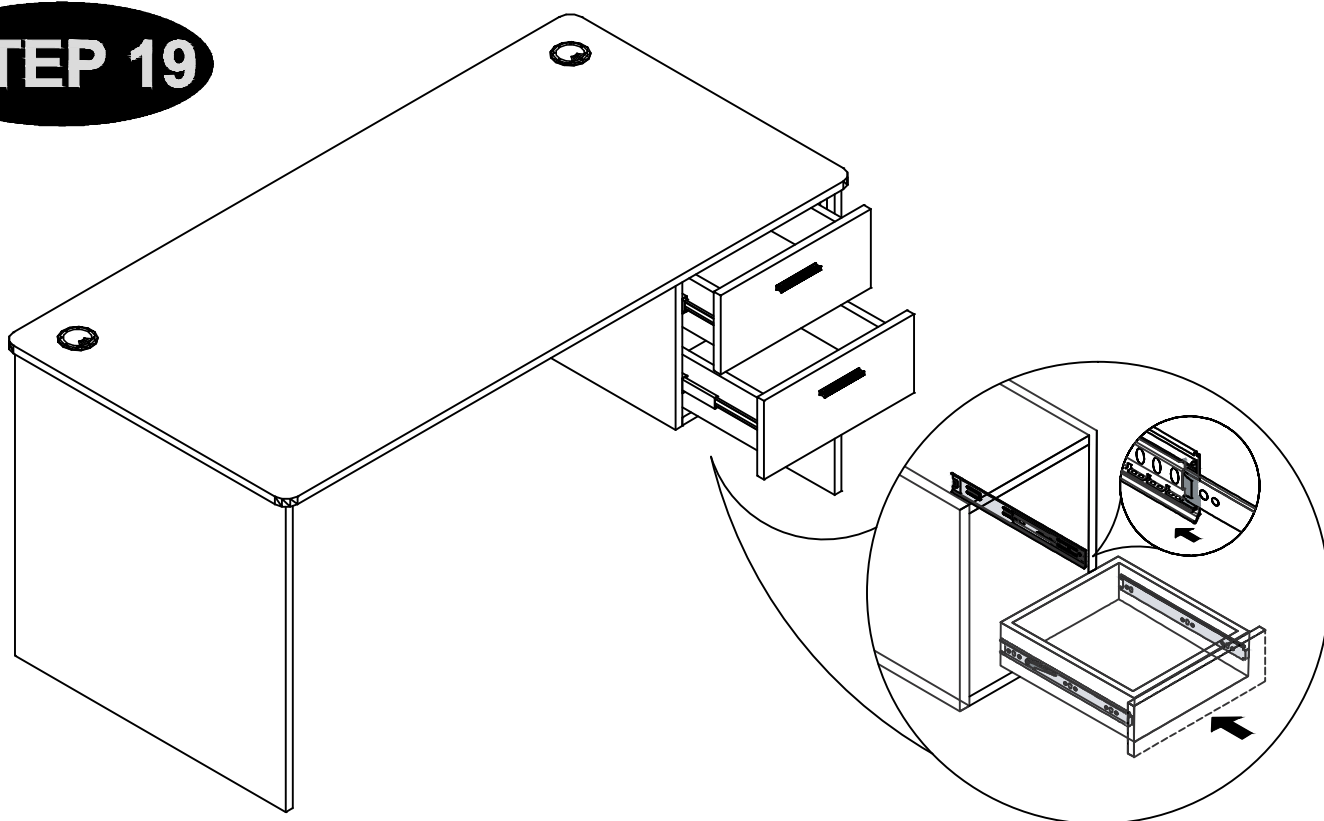
AFTER SALES SUPPORT

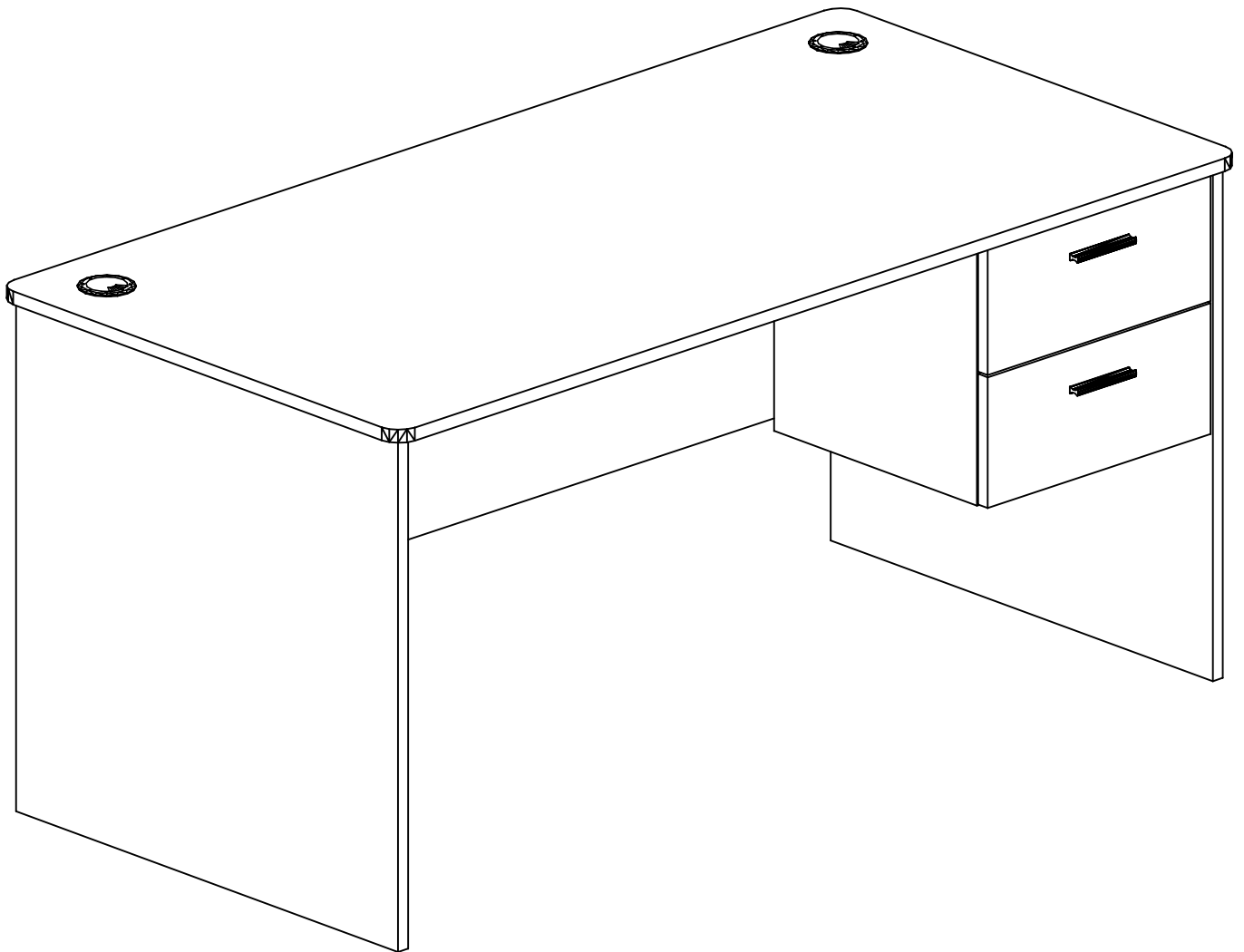
 **NZ** 0800 422 274

STEP 18



STEP 19








Warranty

We pride ourselves on producing a range of quality products that are both packed with features and completely reliable. We are so confident in our products, we back them up with a 5 year warranty. Now you too can relax knowing that you are covered.

Customer Helpline NZ: 0800 422 274
This Product is covered by 5 year warranty when accompanied by proof of purchase.

AFTER SALES SUPPORT

 **(NZ)** 0800 422 274